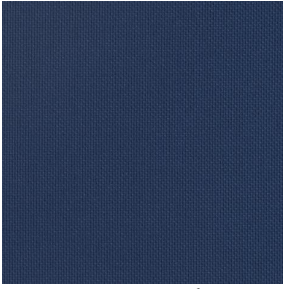


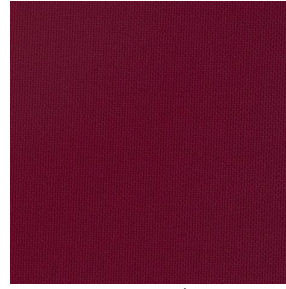
# CORTE



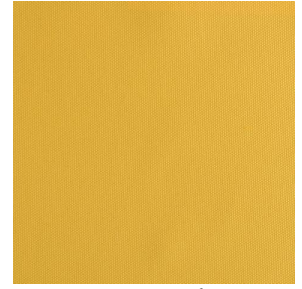
CORTE Naval 17



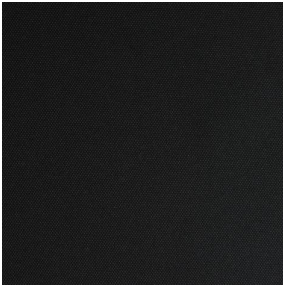
CORTE Orgeat 127



CORTE Opéra 04



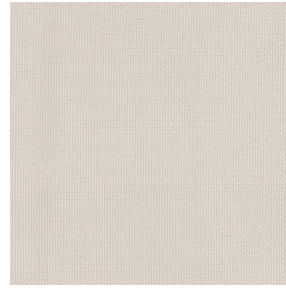
CORTE Miel 07



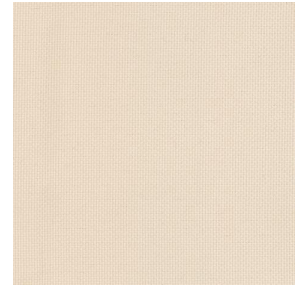
CORTE Noir 10



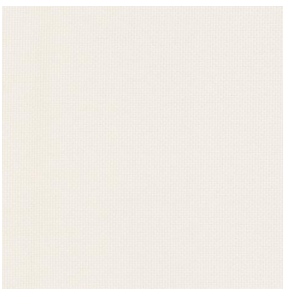
CORTE Anthracite 38



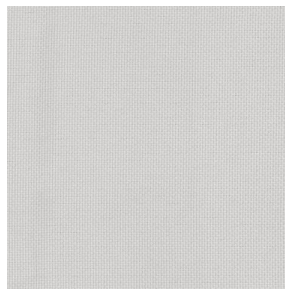
CORTE Mastic 48



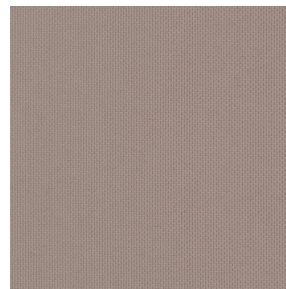
CORTE Ivoire 02



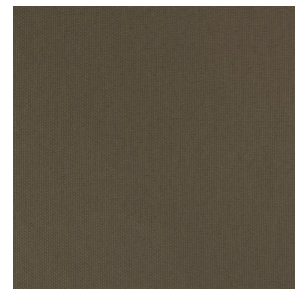
CORTE Blanc 01



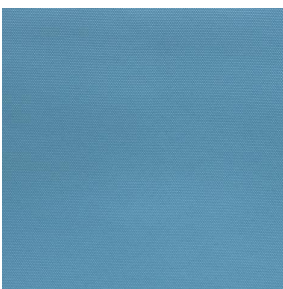
CORTE Souris 31



CORTE Taupe 95



CORTE Moka 13



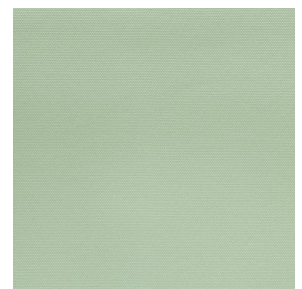
CORTE Céladon 135



CORTE Faïence 149



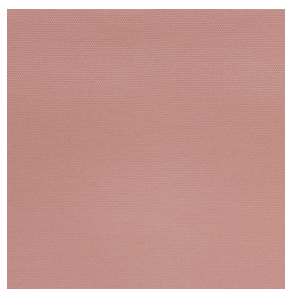
CORTE Indigo 144



CORTE Absinthe 132



CORTE Ocre 03



CORTE Saumon 143



CORTE Hortensia 134



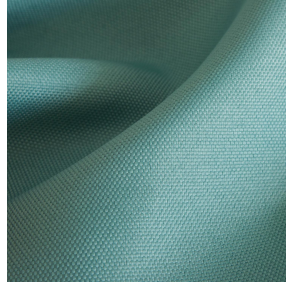
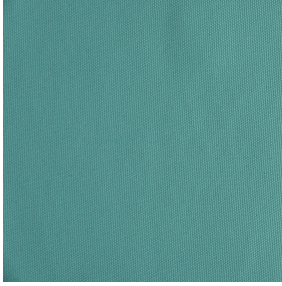
CORTE Cacao 168



sotexpro

(Headquarters) SOTEXPRO - 510 route de Montchal - 42360 PANISSIÈRES - FRANCE - +33 4 77 27 60 60  
(Showroom) Le LAB' SOTEXPRO - 4 rue du Mail - 75002 PARIS - FRANCE

*Non-contractual photos and colors - Indicative fitting - Fitting may vary depending on support selected*



# CORTE Eucalyptus 117

Cette toile unie pare-solaire se dévoile en plusieurs coloris

## Propriétés techniques



Non feu



Thermique



Acoustique

**Applications** Rideaux - Coussin - Décoration murale - Store bateau - Parois japonaises - Couvre lit - Cache sommier - Siège - Chemins de lit

**Composition** 100% polyester FR

**Poids** 230 g/m<sup>2</sup> **Laize** 140 cm / 280 cm

**Sens** Contre sens ou sens normal **Raccord** ↔ cm ↓ cm

**Conseils d'entretien**

**Labels** France Terre Textile (R016)

**Certifications** OEKO-TEX STANDARD 100 (CQ 1006/1)

**Minimum commande** 1 mètre(s) linéaire(s)

## Caractéristiques techniques

Non feu	M1 / BS 5867 TYPE C / B1 / IMO PASS / UNI 8456 / 9174 Classe Uno
Acoustique	<p>Coeff. moyen de réduction sonore (NRC) : <b>0.90</b></p> <p>Coeff. d'absorption acoustique pondéré (a<sub>w</sub>) : <b>0.85</b></p> <p>Classe d'absorption acoustique (a<sub>w</sub>) : <b>B</b></p>
Indices optiques	<p>Réflexion lumière : <b>36 %</b></p> <p>Absorption lumière : <b>58 %</b></p> <p>Transmission lumière : <b>6 %</b></p>
Indices thermiques	<p>réflexion solaire : <b>50 %</b></p> <p>absorption solaire : <b>33 %</b></p> <p>Transmission solaire : <b>17 %</b></p> <p>Transmission UV : <b>0 %</b></p> <p>Gtot : <b>Gt 41 % Fc 69 %</b></p>
Résistance	<p>Solidité lumière (unités Class/8) <b>5</b></p> <p>Boulochage <b>4</b></p> <p>Stabilité dimensionnelle (%)</p> <p>    Chaîne <b>-2</b></p> <p>    Trame <b>-0.5</b></p> <p>Martindale (Cycles) <b>25000</b></p> <p>Allongement rupture (mm)</p> <p>    Chaîne <b>34</b></p> <p>    Trame <b>28</b></p> <p>Résistance rupture (daN)</p> <p>    Chaîne <b>130</b></p> <p>    Trame <b>90</b></p>



(Headquarters) SOTEXPRO - 510 route de Montchal - 42360 PANISSIÈRES - FRANCE - +33 4 77 27 60 60  
(Showroom) Le LAB' SOTEXPRO - 4 rue du Mail - 75002 PARIS - FRANCE

Non-contractual photos and colors - Indicative fitting - Fitting may vary depending on support selected