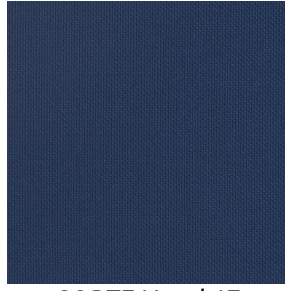


CORTE



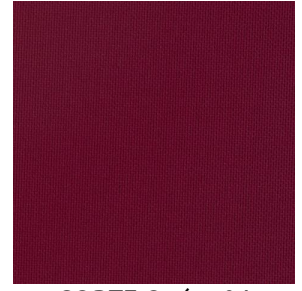
CORTE Eucalyptus 117



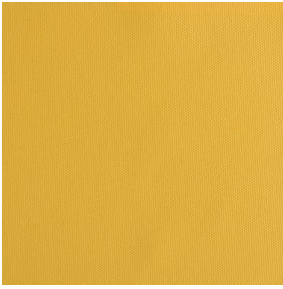
CORTE Naval 17



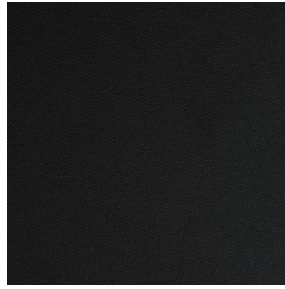
CORTE Orgeat 127



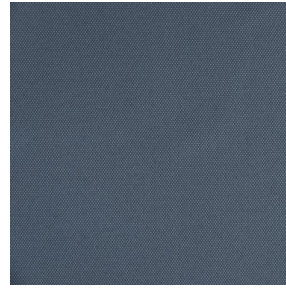
CORTE Opéra 04



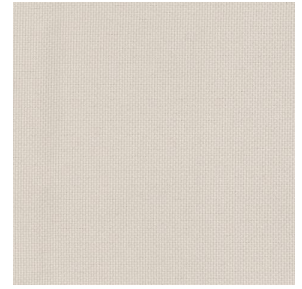
CORTE Miel 07



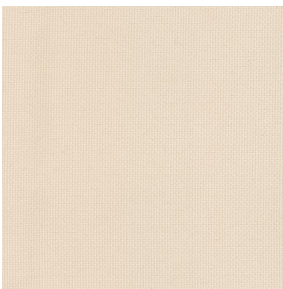
CORTE Noir 10



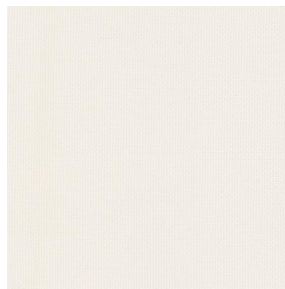
CORTE Anthracite 38



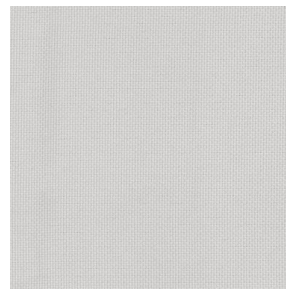
CORTE Mastic 48



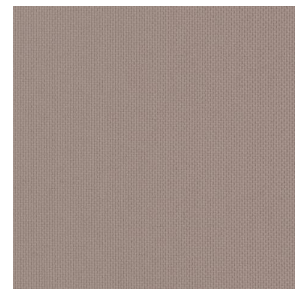
CORTE Ivoire 02



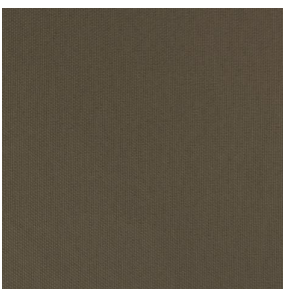
CORTE Blanc 01



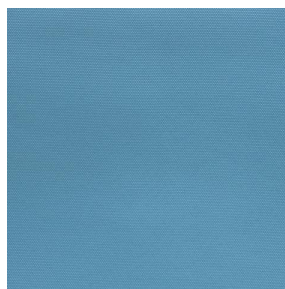
CORTE Souris 31



CORTE Taupe 95



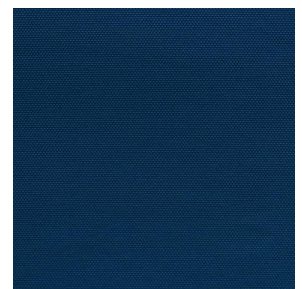
CORTE Moka 13



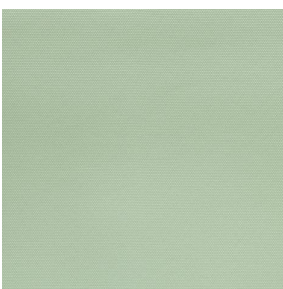
CORTE Céladon 135



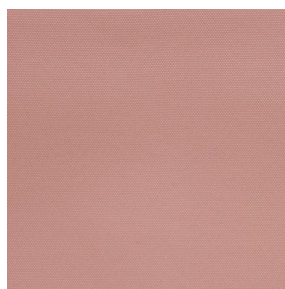
CORTE Faïence 149



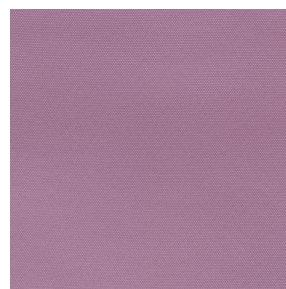
CORTE Indigo 144



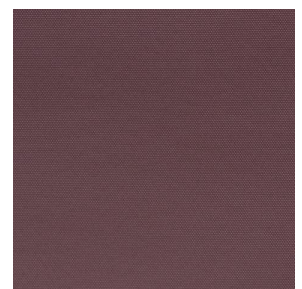
CORTE Absinthe 132



CORTE Saumon 143



CORTE Hortensia 134



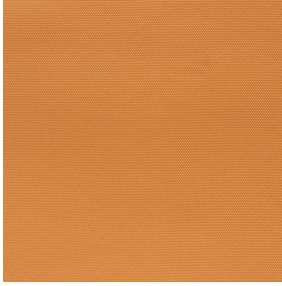
CORTE Cacao 168



sotexpro

(Headquarters) SOTEXPRO - 510 route de Montchal - 42360 PANISSIÈRES - FRANCE - +33 4 77 27 60 60
(Showroom) Le LAB' SOTEXPRO - 4 rue du Mail - 75002 PARIS - FRANCE

Non-contractual photos and colors - Indicative fitting - Fitting may vary depending on support selected



CORTE Ocre 03

Cette toile unie pare-solaire se dévoile en plusieurs coloris

Propriétés techniques



Non feu



Thermique



Acoustique

Applications Store bateau - Parois japonaises - Couvre lit - Cache sommier - Siège - Chemins de lit - Rideaux - Coussin - Décoration murale

Composition 100% polyester FR

Poids 230 g/m² **Laize** 140 cm / 280 cm

Sens Contre sens ou sens normal **Raccord** ↔ cm ↓ cm

Conseils d'entretien

Labels France Terre Textile (R016)

Certifications OEKO-TEX STANDARD 100 (CQ 1006/1)

Minimum commande 1 mètre(s) linéaire(s)

Caractéristiques techniques

Non feu	M1 / BS 5867 TYPE C / B1 / IMO PASS / UNI 8456 / 9174 Classe Uno
Acoustique	Coeff. moyen de réduction sonore (NRC) : 0.90 Coeff. d'absorption acoustique pondéré (a _w) : 0.85 Classe d'absorption acoustique (a _w) : B
Indices optiques	Réflexion lumière : 36 % Absorption lumière : 58 % Transmission lumière : 6 %
Indices thermiques	réflexion solaire : 50 % absorption solaire : 33 % Transmission solaire : 17 % Transmission UV : 0 % Gtot : Gt 41 % Fc 69 %
Résistance	Solidité lumière (unités Class/8) 5 Boulochage 4 Stabilité dimensionnelle (%) Chaîne -2 Trame -0.5 Martindale (Cycles) 25000 Allongement rupture (mm) Chaîne 34 Trame 28 Résistance rupture (daN) Chaîne 130 Trame 90



(Headquarters) SOTEXPRO - 510 route de Montchal - 42360 PANISSIÈRES - FRANCE - +33 4 77 27 60 60
(Showroom) Le LAB' SOTEXPRO - 4 rue du Mail - 75002 PARIS - FRANCE

Non-contractual photos and colors - Indicative fitting - Fitting may vary depending on support selected