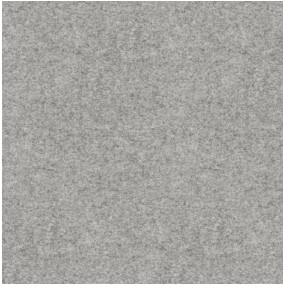
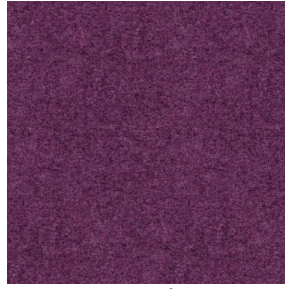


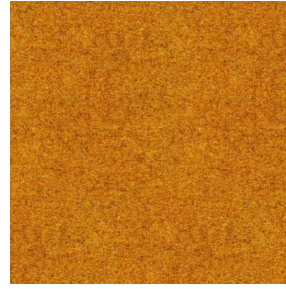
# ELAINA



ELAINA Gris 91



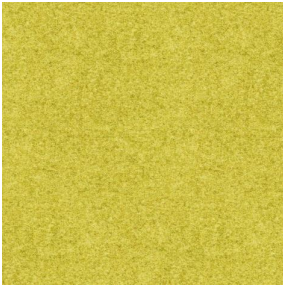
ELAINA Violine 105



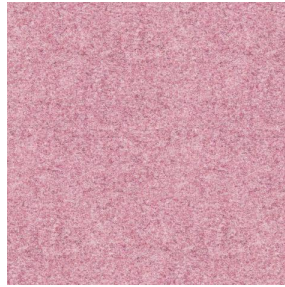
ELAINA Ocre 03



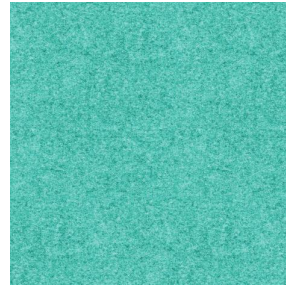
ELAINA Lin 11



ELAINA Bergamote 121



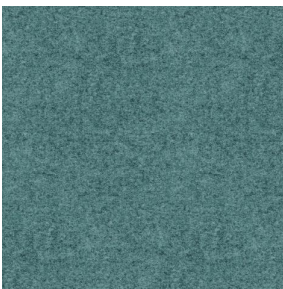
ELAINA Rose 129



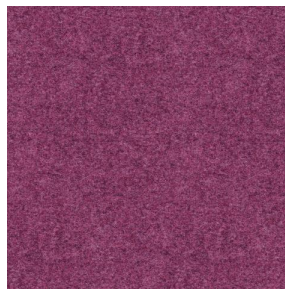
ELAINA Pacifique 54



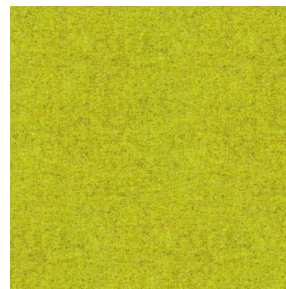
ELAINA Beige 63



ELAINA Céladon 135



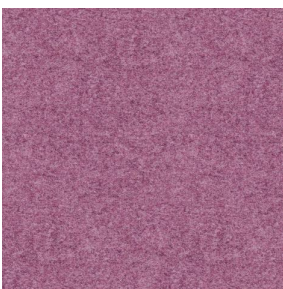
ELAINA Saphir 106



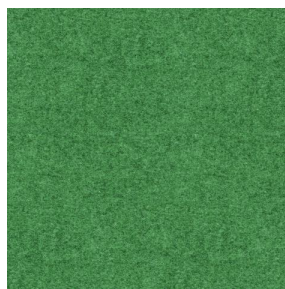
ELAINA Anis 62



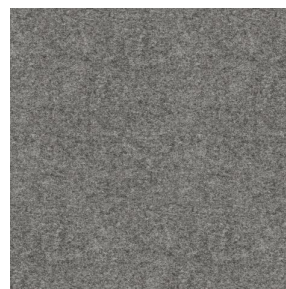
ELAINA Rouge 21



ELAINA Hortensia 134



ELAINA Prairie 125



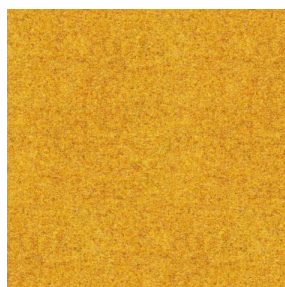
ELAINA Graphite 77



ELAINA Lierre 124



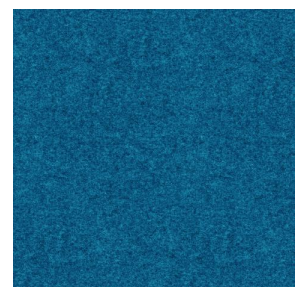
ELAINA Naturel 26



ELAINA Genêt 06



ELAINA Ivoire 115



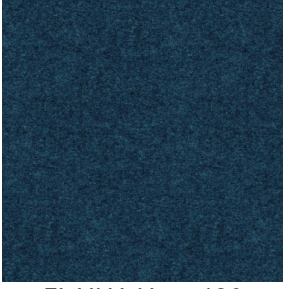
ELAINA Gentiane 16



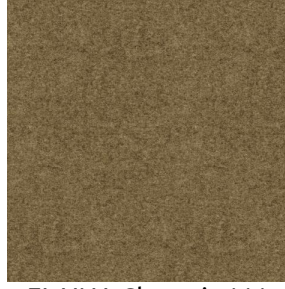
(Headquarters) SOTEXPRO - 510 route de Montchal - 42360 PANISSIÈRES - FRANCE - +33 4 77 27 60 60  
(Showroom) Le LAB' SOTEXPRO - 4 rue du Mail - 75002 PARIS - FRANCE

Non-contractual photos and colors - Indicative fitting - Fitting may vary depending on support selected

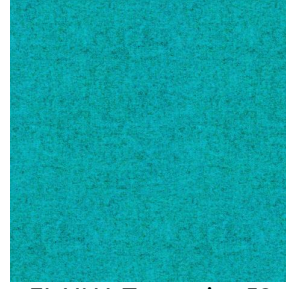
# ELAINA



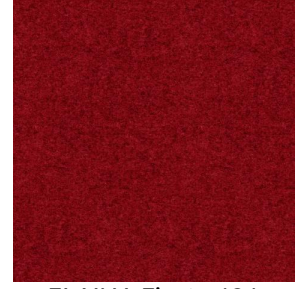
ELAINA Navy 120



ELAINA Chamois 111



ELAINA Turquoise 53



ELAINA Fiesta 131



(Headquarters) SOTEXPRO - 510 route de Montchal - 42360 PANISSIÈRES - FRANCE - +33 4 77 27 60 60  
(Showroom) Le LAB' SOTEXPRO - 4 rue du Mail - 75002 PARIS - FRANCE

*Non-contractual photos and colors - Indicative fitting - Fitting may vary depending on support selected*



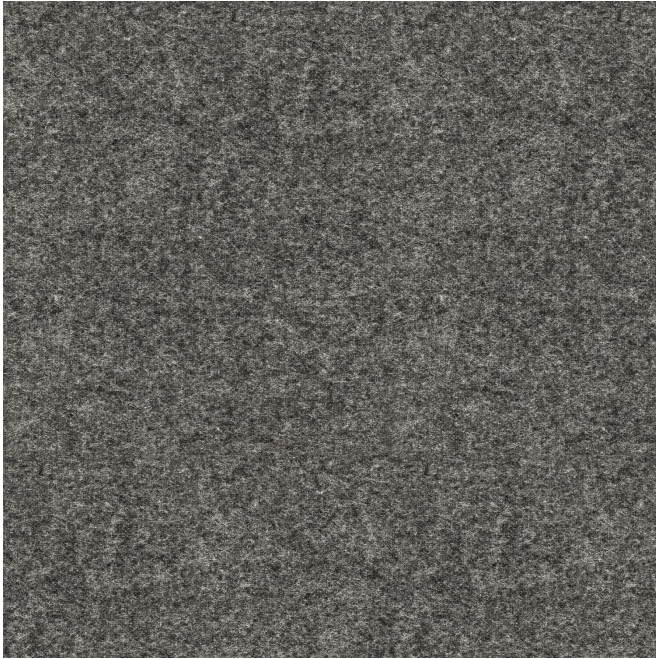
# ELAINA Anthracite 38

Groupe **C**

**Raccord :** ↔ 0.0 cm ↓ 0.0 cm "Le sens d'utilisation du tissu peut varier en fonction du support choisi. Sens normal si tissu petite largeur, contresens si tissu grande largeur"



Pour le choix du support d'impression et de sa largeur (laize), veuillez vous rapprocher de votre conseiller commercial. Contactez un conseiller



(Headquarters) SOTEXPRO - 510 route de Montchal - 42360 PANISSIÈRES - FRANCE - +33 4 77 27 60 60  
(Showroom) Le LAB' SOTEXPRO - 4 rue du Mail - 75002 PARIS - FRANCE

Non-contractual photos and colors - Indicative fitting - Fitting may vary depending on support selected