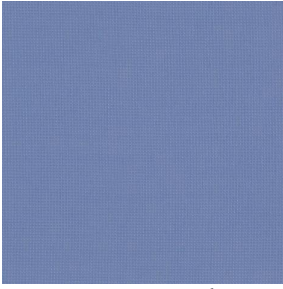
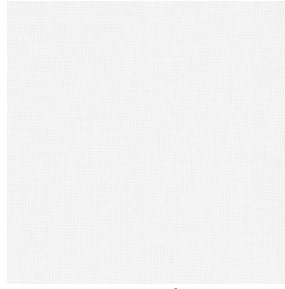


# ETAMINE



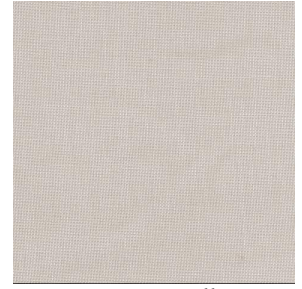
ETAMINE Naval 17



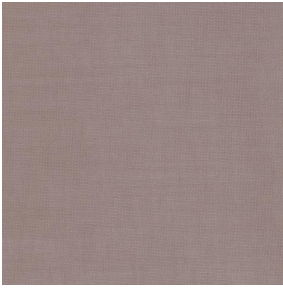
ETAMINE Blanc 01



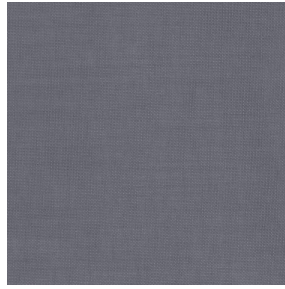
ETAMINE Champagne  
02



ETAMINE Ficelle 09



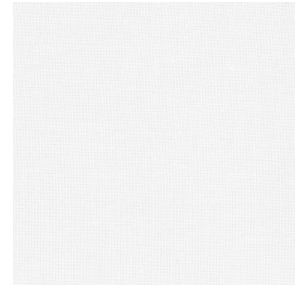
ETAMINE Taupe 95



ETAMINE Anthracite 38



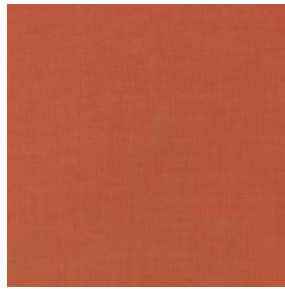
ETAMINE Noir 12



ETAMINE BPI 00



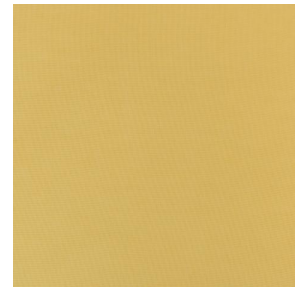
ETAMINE Ardoise 08



ETAMINE Safran 49



ETAMINE Olive 61



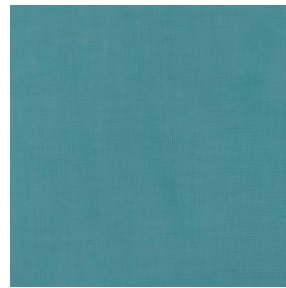
ETAMINE Agrume 69



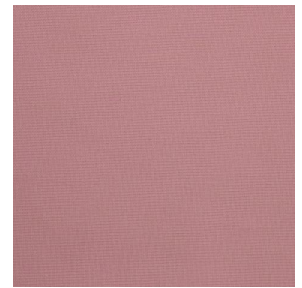
ETAMINE Chocolat 70



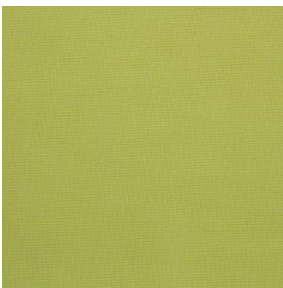
ETAMINE Indigo 144



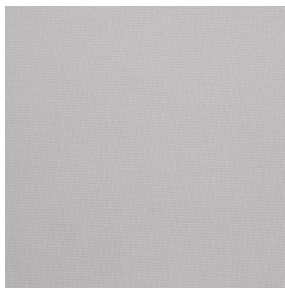
ETAMINE Pacifique 54



ETAMINE Hortensia 134



ETAMINE Cactus 36



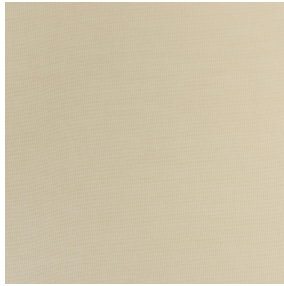
ETAMINE Perle 96



sotexpro

(Headquarters) SOTEXPRO - 510 route de Montchal - 42360 PANISSIÈRES - FRANCE - +33 4 77 27 60 60  
(Showroom) Le LAB' SOTEXPRO - 4 rue du Mail - 75002 PARIS - FRANCE

*Non-contractual photos and colors - Indicative fitting - Fitting may vary depending on support selected*



# ETAMINE Beige 90

Ce voilage léger et aérien se dévoile dans une gamme d'unis de plusieurs coloris.

## Propriétés techniques



Non feu






Transparent

Applications Store bateau - Parois japonaises - Rideaux

Composition 100% polyester FR

Poids 95 g/m<sup>2</sup> Laize 300 cm

Sens Contre sens ou sens normal Raccord ↔ cm ↓ cm

Conseils d'entretien     

Labels France Terre Textile (R016)

Certifications OEKO-TEX STANDARD 100 (CQ 1006/1)

Minimum commande 1 mètre(s) linéaire(s)

## Caractéristiques techniques

|                    |   |                        |
|--------------------|---|------------------------|
| Non feu            | M1 / B1 / IMO PASS / UNI 8456 / 9174 Classe Uno |                        |
| Indices optiques   | Réflexion lumière :                             | <b>33 %</b>            |
|                    | Absorption lumière :                            | <b>16 %</b>            |
|                    | Transmission lumière :                          | <b>51 %</b>            |
| Voile transparent  | Oui   |                        |
| Indices thermiques | réflexion solaire :                             | <b>34 %</b>            |
|                    | absorption solaire :                            | <b>14 %</b>            |
|                    | Transmission solaire :                          | <b>52 %</b>            |
|                    | Transmission UV :                               | <b>41 %</b>            |
|                    | Gtot :  | <b>Gt 47 % Fc 79 %</b> |
| Résistance         | Solidité lumière (unités Class/8)               | <b>4</b>               |
|                    | Stabilité dimensionnelle (%)                    |                        |
|                    | Chaîne  | <b>0</b>               |
|                    | Trame   | <b>0</b>               |
|                    | Allongement rupture (mm)                        |                        |
|                    | Chaîne  | <b>46</b>              |
|                    | Trame   | <b>13</b>              |
|                    | Résistance rupture (daN)                        |                        |
|                    | Chaîne  | <b>41</b>              |
|                    | Trame   | <b>40</b>              |



(Headquarters) SOTEXPRO - 510 route de Montchal - 42360 PANISSIÈRES - FRANCE - +33 4 77 27 60 60  
(Showroom) Le LAB' SOTEXPRO - 4 rue du Mail - 75002 PARIS - FRANCE

Non-contractual photos and colors - Indicative fitting - Fitting may vary depending on supports selected