

ETAMINE



ETAMINE Naval 17



ETAMINE Blanc 01



ETAMINE Champagne
02



ETAMINE Ficelle 09



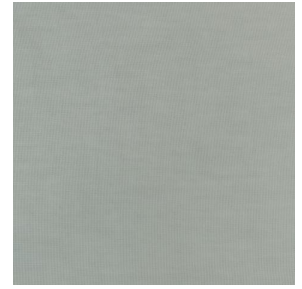
ETAMINE Taupe 95



ETAMINE Anthracite 38



ETAMINE Noir 12



ETAMINE Ardoise 08



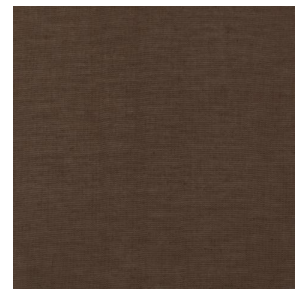
ETAMINE Safran 49



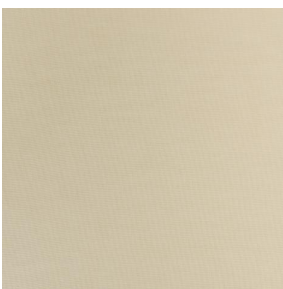
ETAMINE Olive 61



ETAMINE Agrume 69



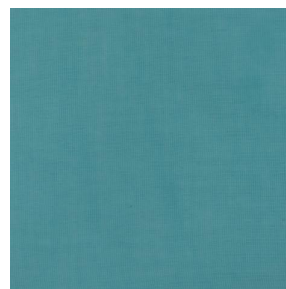
ETAMINE Chocolat 70



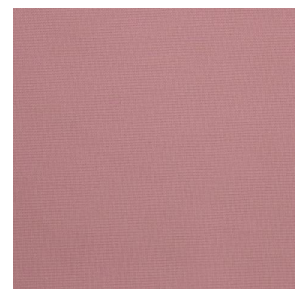
ETAMINE Beige 90



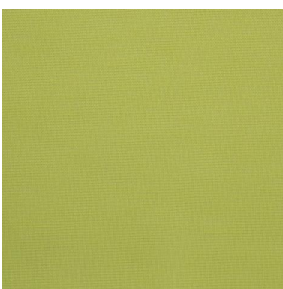
ETAMINE Indigo 144



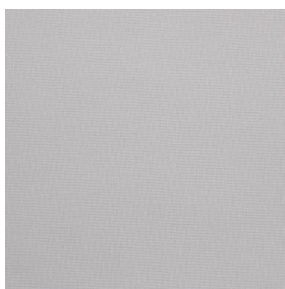
ETAMINE Pacifique 54



ETAMINE Hortensia 134



ETAMINE Cactus 36

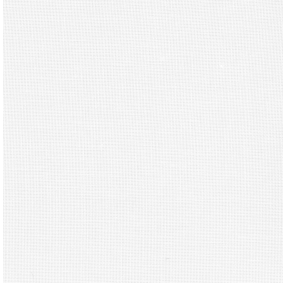


ETAMINE Perle 96



(Headquarters) SOTEXPRO - 510 route de Montchal - 42360 PANISSIÈRES - FRANCE - +33 4 77 27 60 60
(Showroom) Le LAB' SOTEXPRO - 4 rue du Mail - 75002 PARIS - FRANCE

Non-contractual photos and colors - Indicative fitting - Fitting may vary depending on support selected



ETAMINE BPI 00

Voilage de qualité, léger et aérien.

Propriétés techniques




Non feu Transparent

Applications Store bateau - Parois japonaises - Rideaux

Composition 100% polyester FR

Poids 95 g/m² Laize 290 cm

Sens Contre sens Raccord ↔ cm ↓ cm

Conseils d'entretien     

Labels France Terre Textile (R016)

Certifications OEKO-TEX STANDARD 100 (CQ 1006/1)

Minimum commande 25 mètre(s) linéaire(s)

Caractéristiques techniques

Non feu	M1 / B1 / IMO PASS / UNI 8456 / 9174 Classe Uno
Voile transparent	Oui
Résistance	Stabilité dimensionnelle (%)
	Chaîne 0
	Trame 0
	Allongement rupture (mm)
	Chaîne 46
	Trame 13
	Résistance rupture (daN)
	Chaîne 41
	Trame 40



(Headquarters) SOTEXPRO - 510 route de Montchal - 42360 PANISSIÈRES - FRANCE - +33 4 77 27 60 60
(Showroom) Le LAB' SOTEXPRO - 4 rue du Mail - 75002 PARIS - FRANCE

Non-contractual photos and colors - Indicative fitting - Fitting may vary depending on support selected