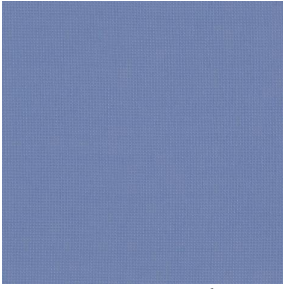
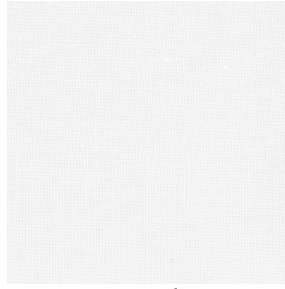


ETAMINE



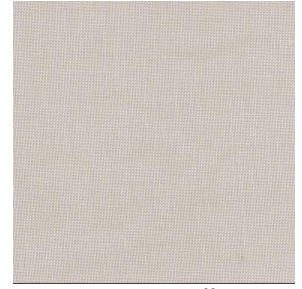
ETAMINE Naval 17



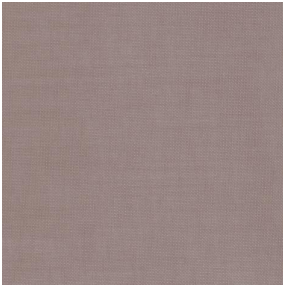
ETAMINE Blanc 01



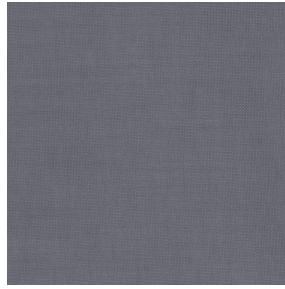
ETAMINE Champagne
02



ETAMINE Ficelle 09



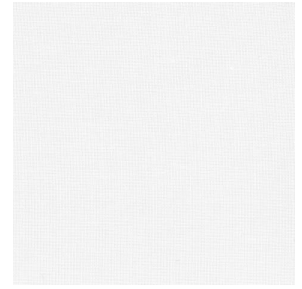
ETAMINE Taupe 95



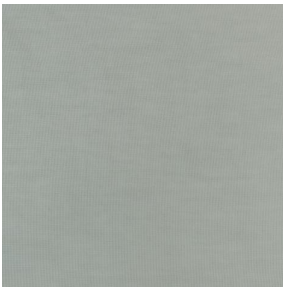
ETAMINE Anthracite 38



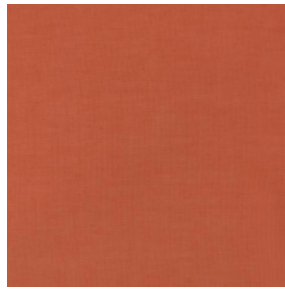
ETAMINE Noir 12



ETAMINE BPI 00



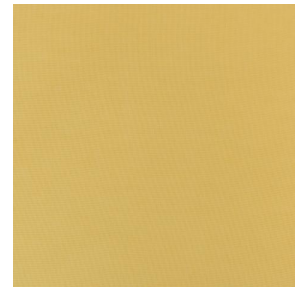
ETAMINE Ardoise 08



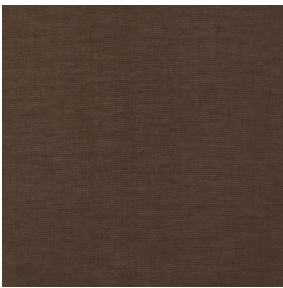
ETAMINE Safran 49



ETAMINE Olive 61



ETAMINE Agrume 69



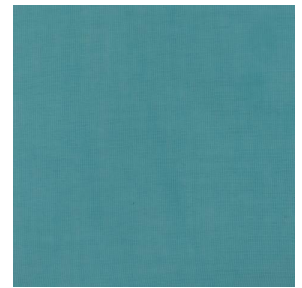
ETAMINE Chocolat 70



ETAMINE Beige 90



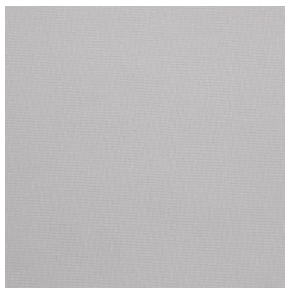
ETAMINE Indigo 144



ETAMINE Pacifique 54



ETAMINE Hortensia 134

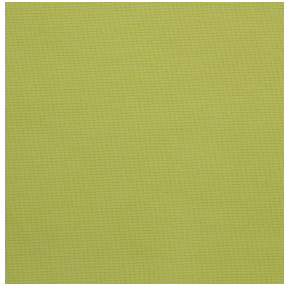


ETAMINE Perle 96



(Headquarters) SOTEXPRO - 510 route de Montchal - 42360 PANISSIÈRES - FRANCE - +33 4 77 27 60 60
(Showroom) Le LAB' SOTEXPRO - 4 rue du Mail - 75002 PARIS - FRANCE

Non-contractual photos and colors - Indicative fitting - Fitting may vary depending on support selected



ETAMINE Cactus 36

Ce voilage léger et aérien se dévoile dans une gamme d'unis de plusieurs coloris.

Propriétés techniques



Non feu Transparent

Applications Store bateau - Parois japonaises - Rideaux

Composition 100% polyester FR

Poids 95 g/m² Laize 300 cm

Sens Contre sens ou sens normal Raccord ↔ cm ↓ cm

Conseils d'entretien

Labels France Terre Textile (R016)

Certifications OEKO-TEX STANDARD 100 (CQ 1006/1)

Minimum commande 1 mètre(s) linéaire(s)

Caractéristiques techniques

Non feu	M1 / B1 / IMO PASS / UNI 8456 / 9174 Classe Uno
Indices optiques	Réflexion lumière : 42 % Absorption lumière : 4 % Transmission lumière : 54 %
Voile transparent	Oui
Indices thermiques	réflexion solaire : 43 % absorption solaire : 3 % Transmission solaire : 54 % Transmission UV : 52 % Gtot : Gt 44 % Fc 75 %
Résistance	Solidité lumière (unités Class/8) 6 Stabilité dimensionnelle (%) Chaîne 0 Trame 0 Allongement rupture (mm) Chaîne 46 Trame 13 Résistance rupture (daN) Chaîne 41 Trame 40



(Headquarters) SOTEXPRO - 510 route de Montchal - 42360 PANISSIÈRES - FRANCE - +33 4 77 27 60 60
(Showroom) Le LAB' SOTEXPRO - 4 rue du Mail - 75002 PARIS - FRANCE

Non-contractual photos and colors - Indicative fitting - Fitting may vary depending on supports selected