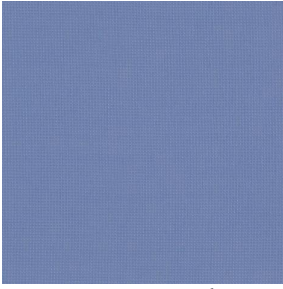
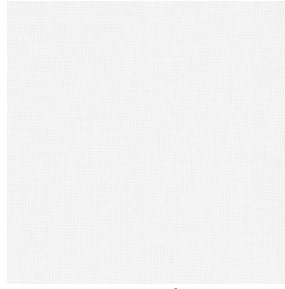


ETAMINE



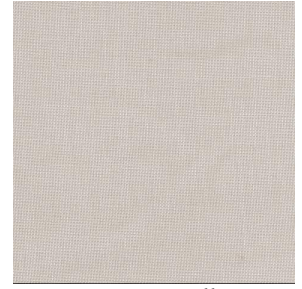
ETAMINE Naval 17



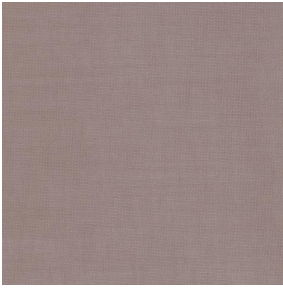
ETAMINE Blanc 01



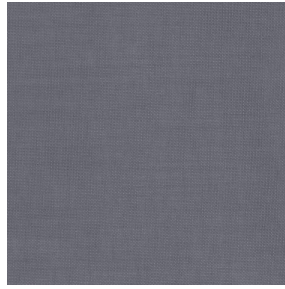
ETAMINE Champagne
02



ETAMINE Ficelle 09



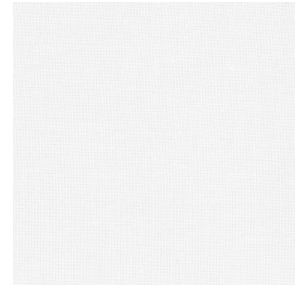
ETAMINE Taupe 95



ETAMINE Anthracite 38



ETAMINE Noir 12



ETAMINE BPI 00



ETAMINE Ardoise 08



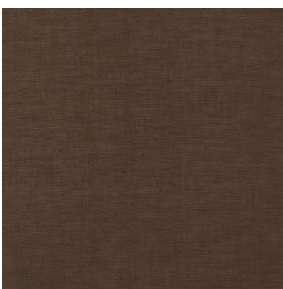
ETAMINE Safran 49



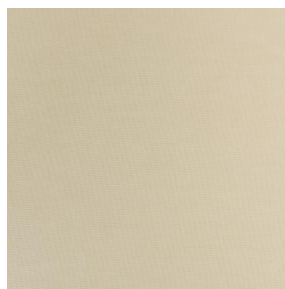
ETAMINE Olive 61



ETAMINE Agrume 69



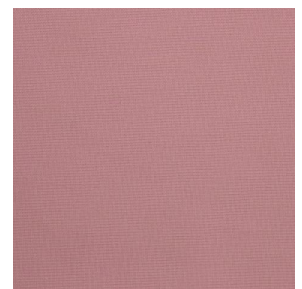
ETAMINE Chocolat 70



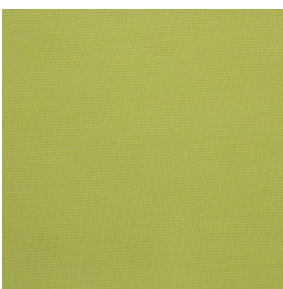
ETAMINE Beige 90



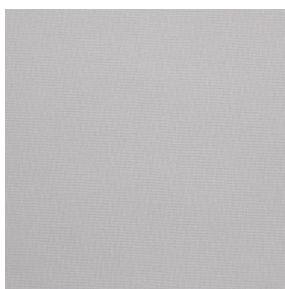
ETAMINE Indigo 144



ETAMINE Hortensia 134



ETAMINE Cactus 36



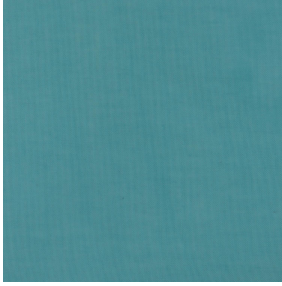
ETAMINE Perle 96



sotexpro

(Headquarters) SOTEXPRO - 510 route de Montchal - 42360 PANISSIÈRES - FRANCE - +33 4 77 27 60 60
(Showroom) Le LAB' SOTEXPRO - 4 rue du Mail - 75002 PARIS - FRANCE

Non-contractual photos and colors - Indicative fitting - Fitting may vary depending on support selected



ETAMINE Pacifique 54

Ce voilage léger et aérien se dévoile dans une gamme d'unis de plusieurs coloris.

Propriétés techniques



Non feu Transparent

Applications Store bateau - Parois japonaises - Rideaux

Composition 100% polyester FR

Poids 95 g/m² Laize 300 cm

Sens Contre sens ou sens normal Raccord ↔ cm ↓ cm

Conseils d'entretien

Labels France Terre Textile (R016)

Certifications OEKO-TEX STANDARD 100 (CQ 1006/1)

Minimum commande 1 mètre(s) linéaire(s)

Caractéristiques techniques

Non feu	M1 / B1 / IMO PASS / UNI 8456 / 9174 Classe Uno
Indices optiques	Réflexion lumière : 33 % Absorption lumière : 16 % Transmission lumière : 51 %
Voile transparent	Oui
Indices thermiques	réflexion solaire : 34 % absorption solaire : 14 % Transmission solaire : 52 % Transmission UV : 41 % Gtot : Gt 47 % Fc 79 %
Résistance	Solidité lumière (unités Class/8) 4 Stabilité dimensionnelle (%) Chaîne 0 Trame 0 Allongement rupture (mm) Chaîne 46 Trame 13 Résistance rupture (daN) Chaîne 41 Trame 40



(Headquarters) SOTEXPRO - 510 route de Montchal - 42360 PANISSIÈRES - FRANCE - +33 4 77 27 60 60
(Showroom) Le LAB' SOTEXPRO - 4 rue du Mail - 75002 PARIS - FRANCE

Non-contractual photos and colors - Indicative fitting - Fitting may vary depending on supports selected