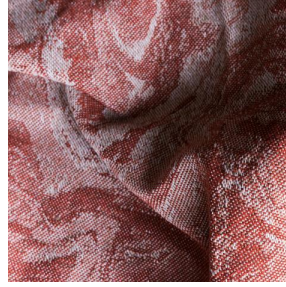


# IMMERSION SIENTA



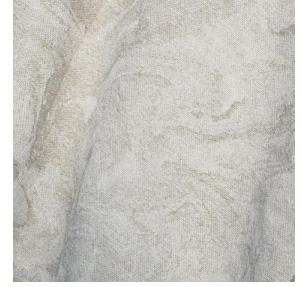
IMMERSION SIENTA  
Mousse 92



IMMERSION SIENTA  
Châtaigne 55



IMMERSION SIENTA  
Sisal 140



IMMERSION SIENTA  
Naturel 26



(Headquarters) SOTEXPRO - 510 route de Montchal - 42360 PANISSIÈRES - FRANCE - +33 4 77 27 60 60  
(Showroom) Le LAB' SOTEXPRO - 4 rue du Mail - 75002 PARIS - FRANCE

*Non-contractual photos and colors - Indicative fitting - Fitting may vary depending on support selected*



# IMMERSION SIENTA Jade 116

Jacquard SIENTA M1

## Propriétés techniques



Non feu



Tissus recyclés

**Applications** Store bateau - Parois japonaises - Couvre lit - Chemins de lit - Rideaux - Coussin

**Composition** 43% polyester FR recyclé / 57% polyester FR

**Poids** 350 g/m<sup>2</sup> **Laize** 280 cm

**Sens** Contre sens ou sens normal **Raccord** ↔ cm ↓ cm

**Conseils d'entretien**     

**Labels** France Terre Textile (R016)

**Minimum commande** 1 mètre(s) linéaire(s)

## Caractéristiques techniques

---

Non feu

M1



(Headquarters) SOTEXPRO - 510 route de Montchal - 42360 PANISSIÈRES - FRANCE - +33 4 77 27 60 60  
(Showroom) Le LAB' SOTEXPRO - 4 rue du Mail - 75002 PARIS - FRANCE

Non-contractual photos and colors - Indicative fitting - Fitting may vary depending on support selected