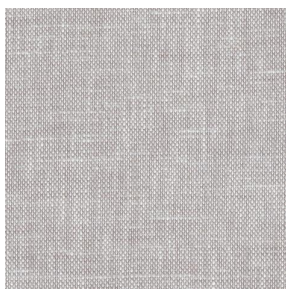
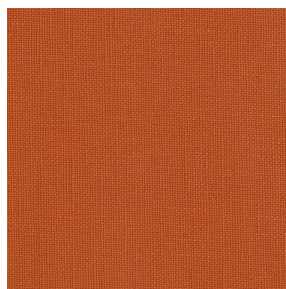


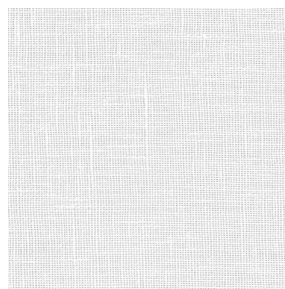
LINOSA



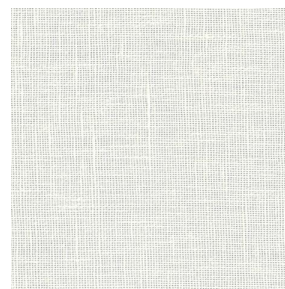
LINOSA Lin 11



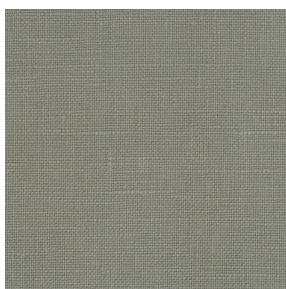
LINOSA Terracotta 65



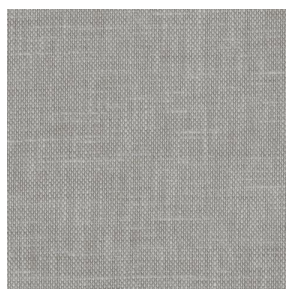
LINOSA Blanc 01



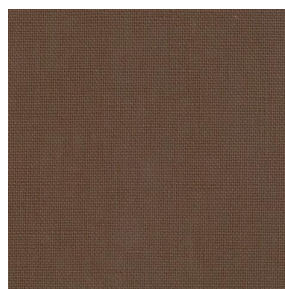
LINOSA Ivoire 02



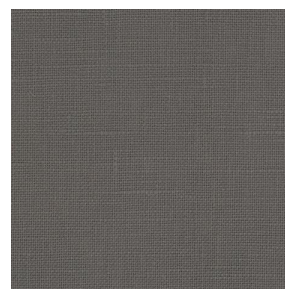
LINOSA Souris 31



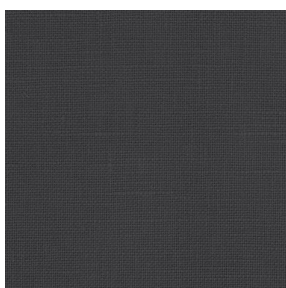
LINOSA Havane 44



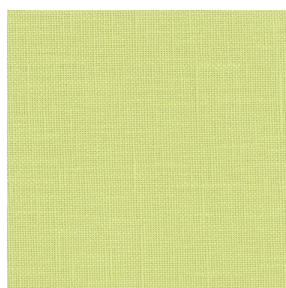
LINOSA Taupe 95



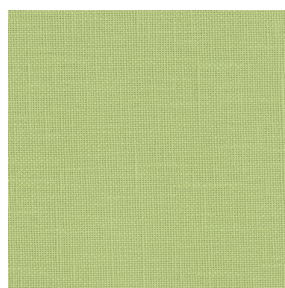
LINOSA Anthracite 38



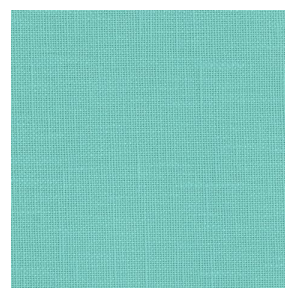
LINOSA Titanium 98



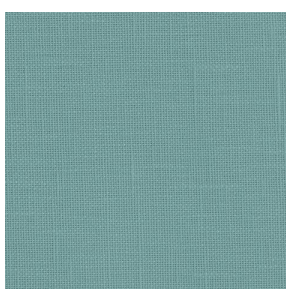
LINOSA Bergamotte
121



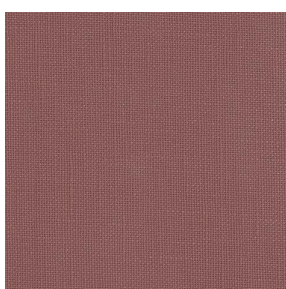
LINOSA Tilleul 103



LINOSA Lagon 110



LINOSA Glacier 43

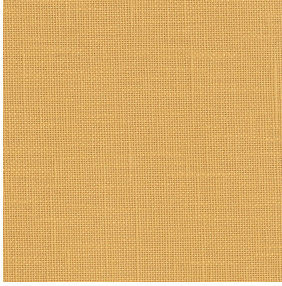


LINOSA Muscade 175



(Headquarters) SOTEXPRO - 510 route de Montchal - 42360 PANISSIÈRES - FRANCE - +33 4 77 27 60 60
(Showroom) Le LAB' SOTEXPRO - 4 rue du Mail - 75002 PARIS - FRANCE

Non-contractual photos and colors - Indicative fitting - Fitting may vary depending on support selected



LINOSA Miel 17

Ce tissu pare-soleil uni aspect lin, saura vous séduire pour une décoration naturelle et chaleureuse.

Propriétés techniques



Non feu

Applications Store bateau - Parois japonaises - Rideaux - Coussin - Décoration murale

Composition 100% polyester FR

Poids 260 g/m² Laize 280 cm

Sens Contre sens ou sens normal Raccord ↔ cm ↓ cm

Conseils d'entretien     

Labels France Terre Textile (R016)

Certifications OEKO-TEX STANDARD 100 (CQ 1006/1)

Minimum commande 1 mètre(s) linéaire(s)



Caractéristiques techniques

Non feu

M1 / B1 / IMO PASS / UNI 8456 / 9174 Classe Uno

Indices optiques

Réflexion lumière : **33 %**

Absorption lumière : **51 %**

Transmission lumière : **16 %**

Indices thermiques

réflexion solaire : **46 %**

absorption solaire : **28 %**

Transmission solaire : **26 %**

Transmission UV : **14 %**

Gtot : **Gt 42 % Fc 71 %**

Résistance

Solidité lumière (unités Class/8) **6**

Boulochage **1-2**

Stabilité dimensionnelle (%)

Chaîne **-2**

Trame **-0.5**

Martindale (Cycles) **30000**

Allongement rupture (mm)

Chaîne **25**

Trame **25**

Résistance rupture (daN)

Chaîne **140**

Trame **100**



(Headquarters) SOTEXPRO - 510 route de Montchal - 42360 PANISSIÈRES - FRANCE - +33 4 77 27 60 60
(Showroom) Le LAB' SOTEXPRO - 4 rue du Mail - 75002 PARIS - FRANCE

Non-contractual photos and colors - Indicative fitting - Fitting may vary depending on supports selected