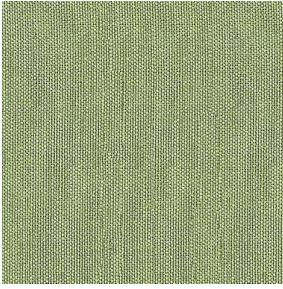
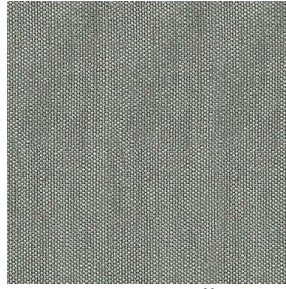


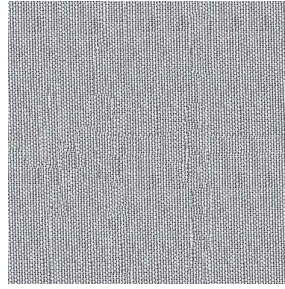
M140 ALU



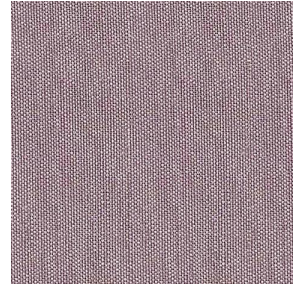
M140 ALU Anis 62



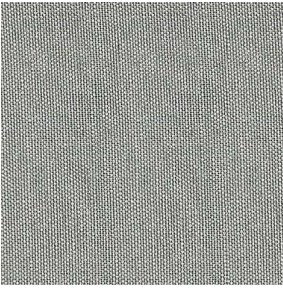
M140 ALU Ficelle 09



M140 ALU Gris 97



M140 ALU Vieux rose
64

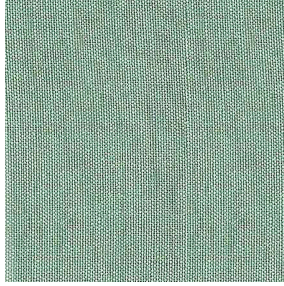


M140 ALU Lin 11



(Headquarters) SOTEXPRO - 510 route de Montchal - 42360 PANISSIÈRES - FRANCE - +33 4 77 27 60 60

Non-contractual photos and colors - Indicative fitting - Fitting may vary depending on support selected



M140 ALU Menthe 122

Propriétés techniques



Non feu Thermique Transparent

Applications Store bateau - Parois japonaises - Rideaux

Composition 100 % polyester FR aluminisé

Poids 70 g/m² Laize 280 cm

Sens Contre sens ou sens normal Raccord ↔ cm ↓ cm

Conseils d'entretien

Minimum commande 1 mètre(s) linéaire(s)

Caractéristiques techniques

| | | |
|--------------------|-----------------------------------|-----------------|
| Non feu | M1 / IMO PASS | |
| Indices optiques | Réflexion lumière : | 32 % |
| | Absorption lumière : | 40 % |
| | Transmission lumière : | 28 % |
| Voile transparent | Oui | |
| Indices thermiques | réflexion solaire : | 34 % |
| | absorption solaire : | 36 % |
| | Transmission solaire : | 30 % |
| | Transmission UV : | 28 % |
| | Gtot : | Gt 46 % Fc 78 % |
| Résistance | Solidité lumière (unités Class/8) | 6 |
| | Stabilité dimensionnelle (%) | |
| | Chaîne | -0,5 |
| | Trame | 0 |
| | Allongement rupture (mm) | |
| | Chaîne | 14 |
| | Trame | 33 |
| | Résistance rupture (daN) | |
| | Chaîne | 45 |
| | Trame | 41 |



(Headquarters) SOTEXPRO - 510 route de Montchal - 42360 PANISSIÈRES - FRANCE - +33 4 77 27 60 60

Non-contractual photos and colors - Indicative fitting - Fitting may vary depending on supports selected