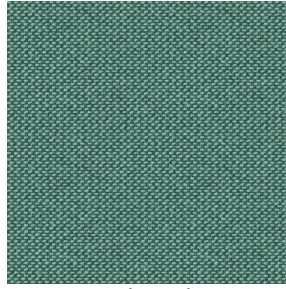


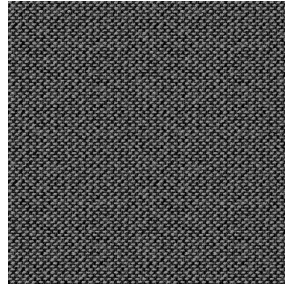
METIS



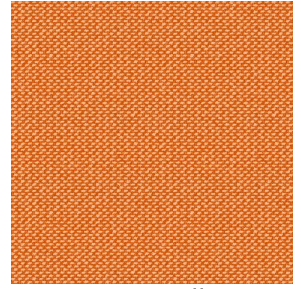
METIS Gentiane 16



METIS Absinthe 132



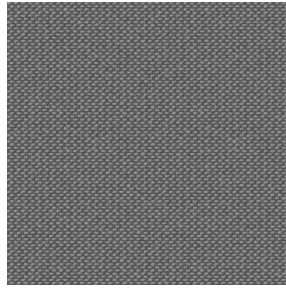
METIS Noir 10



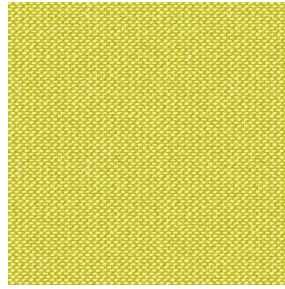
METIS Citrouille 136



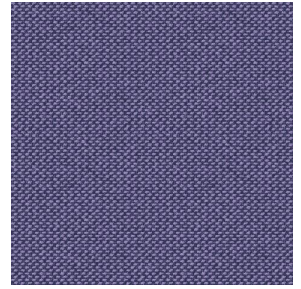
METIS Chanvre 72



METIS Gris 97



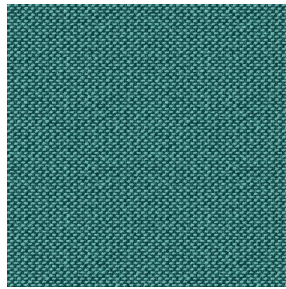
METIS Bergamote 121



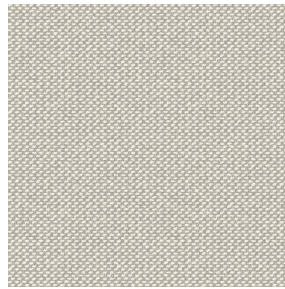
METIS Violine 105



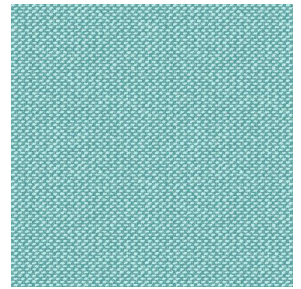
METIS Perle 96



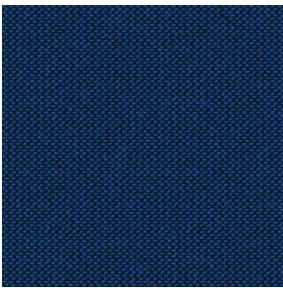
METIS Céladon 135



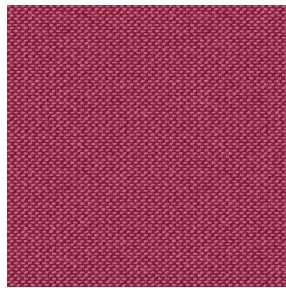
METIS Lin 11



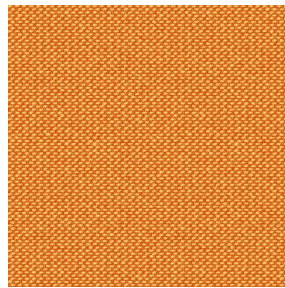
METIS Lagon 110



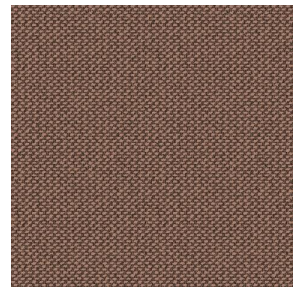
METIS Cobalt 114



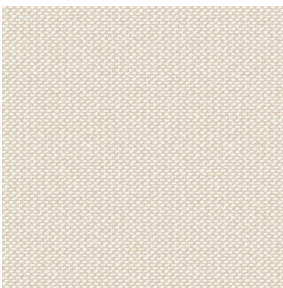
METIS Framboise 81



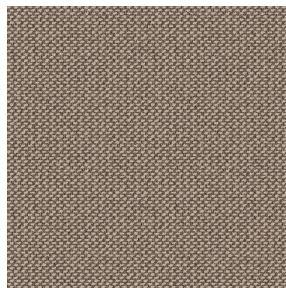
METIS Abricot 08



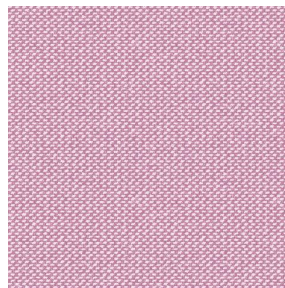
METIS Chamois 111



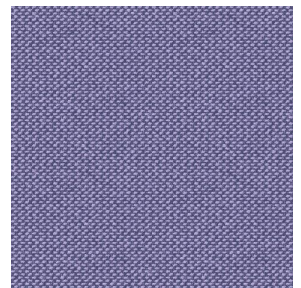
METIS Ivoire 115



METIS Ficelle 09



METIS Rose 129



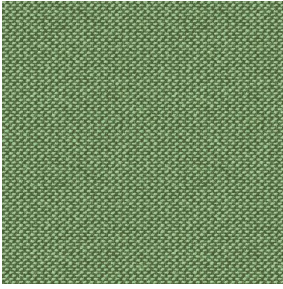
METIS Parme 79



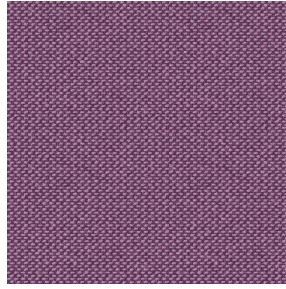
(Headquarters) SOTEXPRO - 510 route de Montchal - 42360 PANISSIÈRES - FRANCE - +33 4 77 27 60 60
(Showroom) Le LAB' SOTEXPRO - 4 rue du Mail - 75002 PARIS - FRANCE

Non-contractual photos and colors - Indicative fitting - Fitting may vary depending on support selected

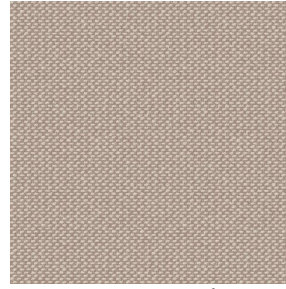
METIS



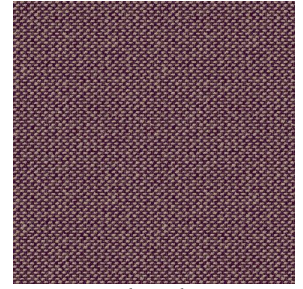
METIS Cactus 36



METIS Hortensia 134



METIS Naturel 26



METIS Chaudron 118



(Headquarters) SOTEXPRO - 510 route de Montchal - 42360 PANISSIÈRES - FRANCE - +33 4 77 27 60 60
(Showroom) Le LAB' SOTEXPRO - 4 rue du Mail - 75002 PARIS - FRANCE

Non-contractual photos and colors - Indicative fitting - Fitting may vary depending on support selected

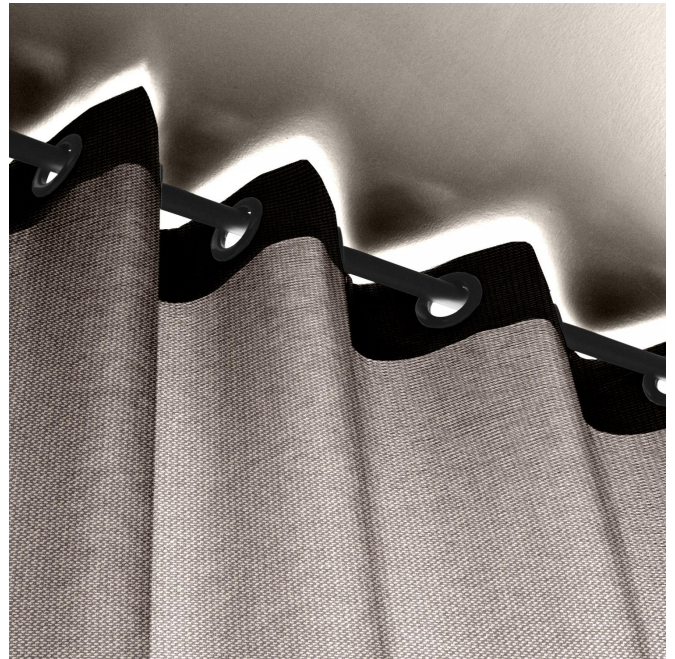
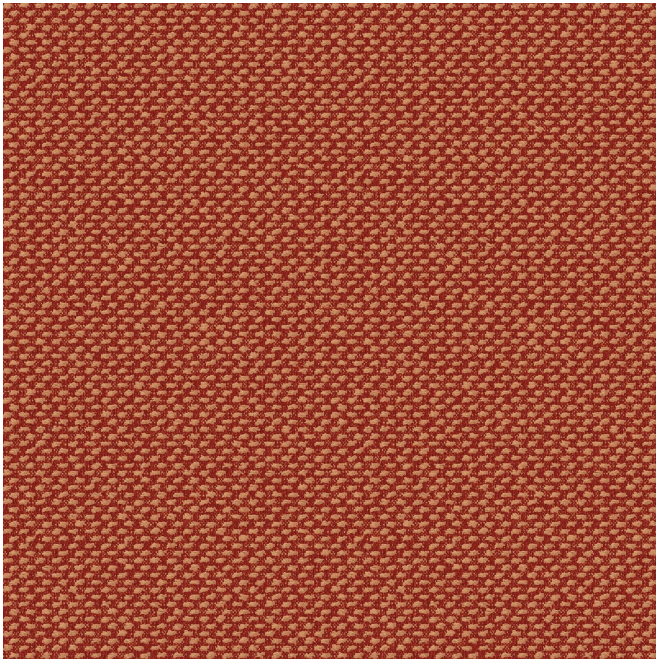
METIS Sienne 29

Groupe **C**

Raccord : ↔ 0.0 cm ↓ 0.0 cm "Le sens d'utilisation du tissu peut varier en fonction du support choisi. Sens normal si tissu petite largeur, contresens si tissu grande largeur"



Pour le choix du support d'impression et de sa largeur (laize), veuillez vous rapprocher de votre conseiller commercial. Contactez un conseiller



(Headquarters) SOTEXPRO - 510 route de Montchal - 42360 PANISSIÈRES - FRANCE - +33 4 77 27 60 60
(Showroom) Le LAB' SOTEXPRO - 4 rue du Mail - 75002 PARIS - FRANCE

Non-contractual photos and colors - Indicative fitting - Fitting may vary depending on support selected