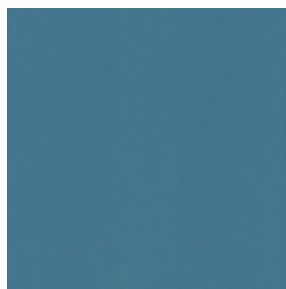


NOCTURNE



NOCTURNE Océan 91



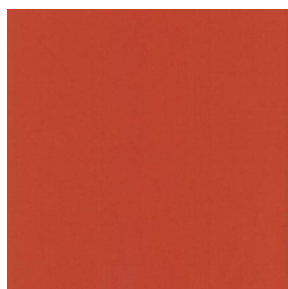
NOCTURNE Arctique 58



NOCTURNE Cyan 90



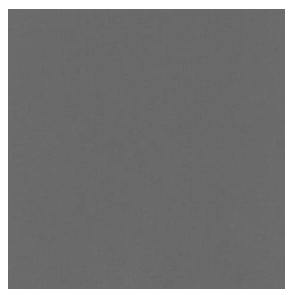
NOCTURNE Mousse 92



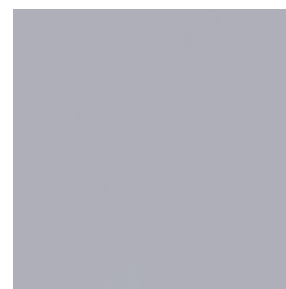
NOCTURNE Orange 15



NOCTURNE Fuchsia 33



NOCTURNE Sienne 29



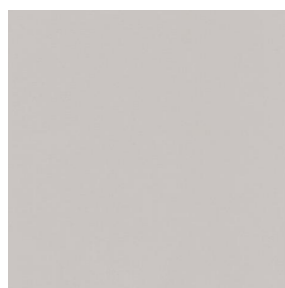
NOCTURNE Perle 96



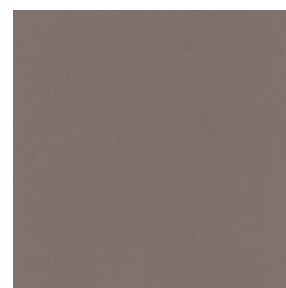
NOCTURNE Grisé 03



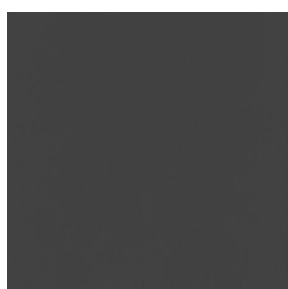
NOCTURNE Crème 02



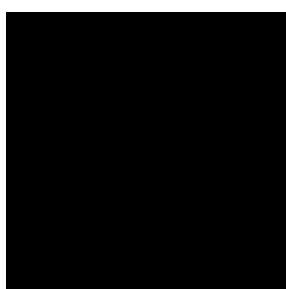
NOCTURNE Mastic 48



NOCTURNE Brun 23



NOCTURNE Taupe 95



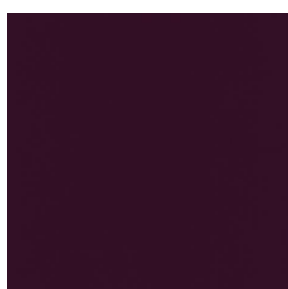
NOCTURNE Noir 10



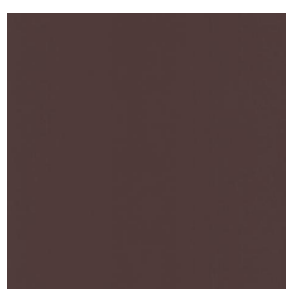
NOCTURNE anthracite
38



NOCTURNE absinthe
132



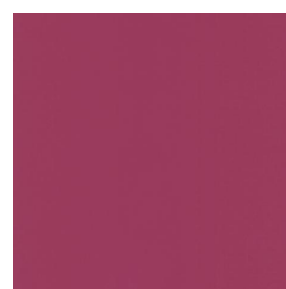
NOCTURNE aubergine
27



NOCTURNE Chamois
111



NOCTURNE Bordeaux
04



NOCTURNE Rubis 59



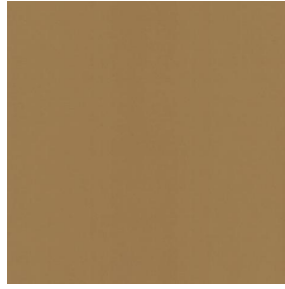
(Headquarters) SOTEXPRO - 510 route de Montchal - 42360 PANISSIÈRES - FRANCE - +33 4 77 27 60 60
(Showroom) Le LAB' SOTEXPRO - 4 rue du Mail - 75002 PARIS - FRANCE

Non-contractual photos and colors - Indicative fitting - Fitting may vary depending on support selected

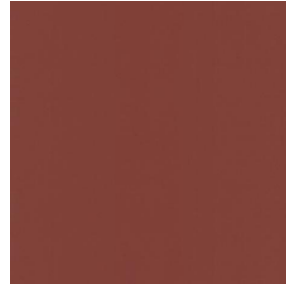
NOCTURNE



NOCTURNE Saumon
143



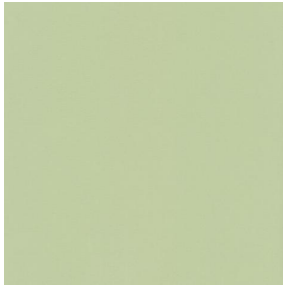
NOCTURNE Or 94



NOCTURNE Terre 107



NOCTURNE Amande 75



NOCTURNE
Bergamotte 121



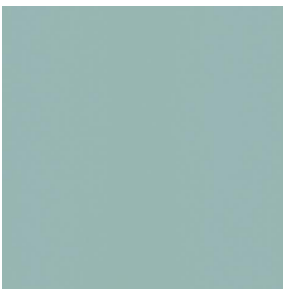
NOCTURNE Tilleul 103



NOCTURNE Prairie 125



NOCTURNE Sapin 126



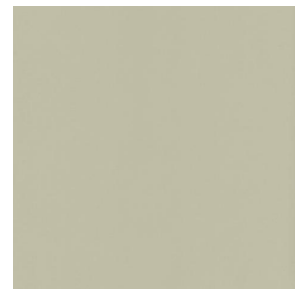
NOCTURNE Ecume 82



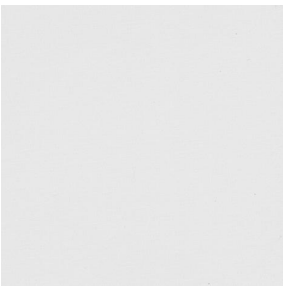
NOCTURNE Beige 63



NOCTURNE Mordoré
133



NOCTURNE Galet 147

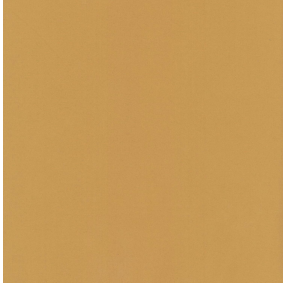


NOCTURNE BPI 00



(Headquarters) SOTEXPRO - 510 route de Montchal - 42360 PANISSIÈRES - FRANCE - +33 4 77 27 60 60
(Showroom) Le LAB' SOTEXPRO - 4 rue du Mail - 75002 PARIS - FRANCE

Non-contractual photos and colors - Indicative fitting - Fitting may vary depending on support selected



NOCTURNE Abricot 08

Ce tissu uni est très performant pour l'occultation, il se décline dans une gamme de coloris très variée.

Propriétés techniques



Non feu







Thermique

Applications Store bateau - Parois japonaises - Doublure - Rideaux

Composition 100% polyester avec envers acrylique floqué blanc

Poids 280 g/m² Laize 280 cm

Sens Contre sens ou sens normal Raccord ↔ cm ↓ cm

Conseils d'entretien     

Minimum commande 1 mètre(s) linéaire(s)

Caractéristiques techniques

Non feu

M1 / BS 5867 TYPE C / B1 / IMO PASS

Indices optiques

Réflexion lumière : 71 %

Absorption lumière : 29 %

Transmission lumière : 0 %

Indices thermiques

réflexion solaire : 66 %

absorption solaire : 34 %

Transmission solaire : 0 %

Transmission UV : 0 %

Gtot : Gt 35 % Fc 60 %

Résistance

Solidité lumière (unités Class/8) 5

Boulochage 3-4

Stabilité dimensionnelle (%)

Chaîne -0,5

Trame 0

Martindale (Cycles) 40000

Allongement rupture (mm)

Chaîne 19

Trame 22

Résistance rupture (daN)

Chaîne 37

Trame 57



(Headquarters) SOTEXPRO - 510 route de Montchal - 42360 PANISSIÈRES - FRANCE - +33 4 77 27 60 60
(Showroom) Le LAB' SOTEXPRO - 4 rue du Mail - 75002 PARIS - FRANCE

Non-contractual photos and colors - Indicative fitting - Fitting may vary depending on support selected