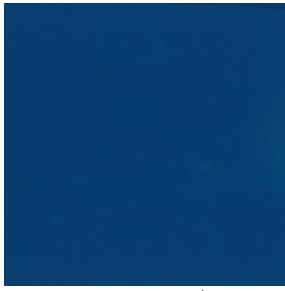
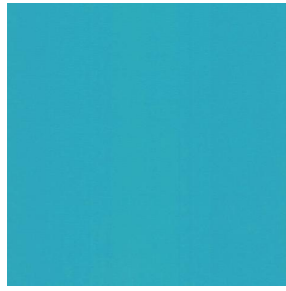


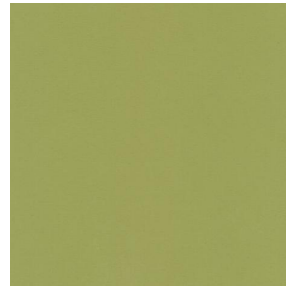
NOCTURNE



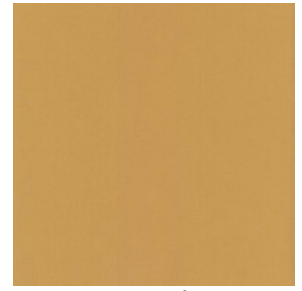
NOCTURNE Océan 91



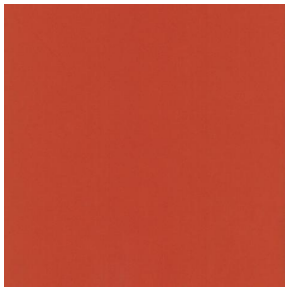
NOCTURNE Cyan 90



NOCTURNE Mousse 92



NOCTURNE Abricot 08



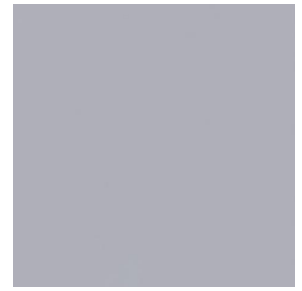
NOCTURNE Orange 15



NOCTURNE Fuchsia 33



NOCTURNE Sienne 29



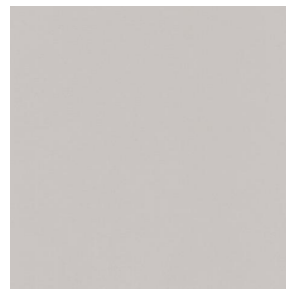
NOCTURNE Perle 96



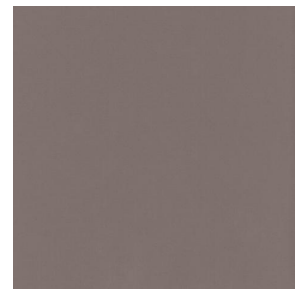
NOCTURNE Gris  03



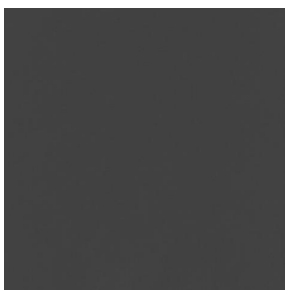
NOCTURNE Cr me 02



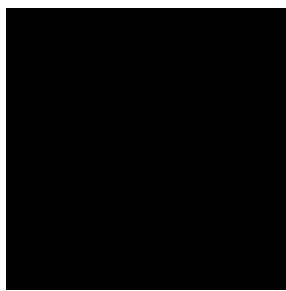
NOCTURNE Mastic 48



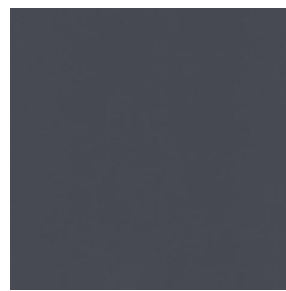
NOCTURNE Brun 23



NOCTURNE Taupe 95



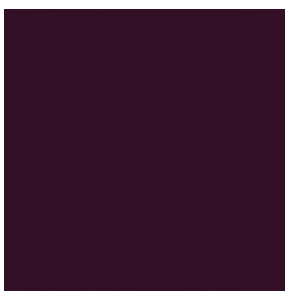
NOCTURNE Noir 10



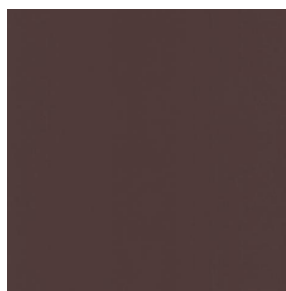
NOCTURNE anthracite
38



NOCTURNE absinthe
132



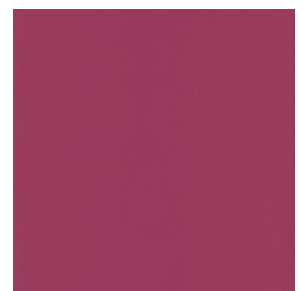
NOCTURNE aubergine
27



NOCTURNE Chamois
111



NOCTURNE Bordeaux
04



NOCTURNE Rubis 59



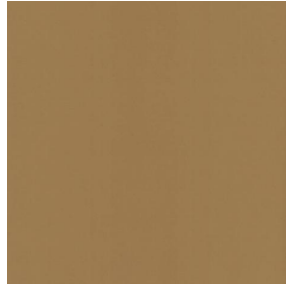
(Headquarters) SOTEXPRO - 510 route de Montchal - 42360 PANISSI RES - FRANCE - +33 4 77 27 60 60

Non-contractual photos and colors - Indicative fitting - Fitting may vary depending on support selected

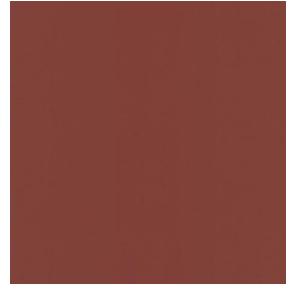
NOCTURNE



NOCTURNE Saumon
143



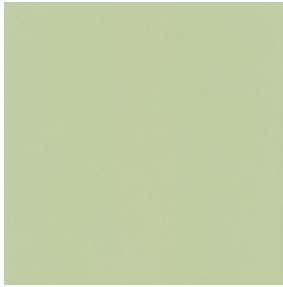
NOCTURNE Or 94



NOCTURNE Terre 107



NOCTURNE Amande 75



NOCTURNE
Bergamotte 121



NOCTURNE Tilleul 103



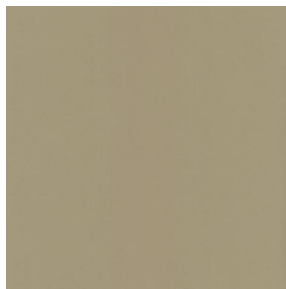
NOCTURNE Prairie 125



NOCTURNE Sapin 126



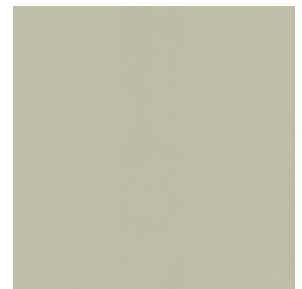
NOCTURNE Ecume 82



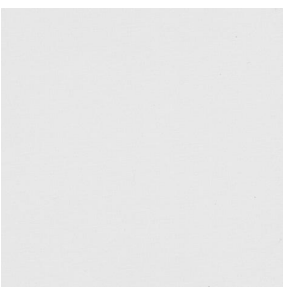
NOCTURNE Beige 63



NOCTURNE Mordoré
133



NOCTURNE Galet 147



NOCTURNE BPI 00



(Headquarters) SOTEXPRO - 510 route de Montchal - 42360 PANISSIÈRES - FRANCE - +33 4 77 27 60 60

Non-contractual photos and colors - Indicative fitting - Fitting may vary depending on support selected

NOCTURNE Arctique 58

Ce tissu uni est très performant pour l'occultation, il se décline dans une gamme de coloris très variée.

Propriétés techniques



Non feu



Thermique

Applications Store bateau - Parois japonaises - Doublure - Rideaux

Composition 100% polyester avec envers acrylique floqué blanc

Poids 280 g/m² 784 g/m² **Laize** 280 cm

Sens Contre sens ou sens normal **Raccord** ↔ cm ↓ cm

Conseils d'entretien ✕ ☒ ☞ ☉

Minimum commande 1 mètre(s) linéaire(s)

Caractéristiques techniques

Non feu	M1 / BS 5867 TYPE C / B1 / IMO PASS		
Indices optiques	Réflexion lumière :	71 %	
	Absorption lumière :	29 %	
	Transmission lumière :	0 %	
Indices thermiques	réflexion solaire :	66 %	
	absorption solaire :	34 %	
	Transmission solaire :	0 %	
	Transmission UV :	0 %	
	Gtot :	Gt 35 % Fc 60 %	
Résistance	Solidité lumière (unités Class/8)	4	
	Boulochage	3-4	
	Stabilité dimensionnelle (%)	Chaîne	-0,5
		Trame	0
	Martindale (Cycles)	40000	
	Allongement rupture (mm)	Chaîne	19
		Trame	22
	Résistance rupture (daN)	Chaîne	37
		Trame	57



(Headquarters) SOTEXPRO - 510 route de Montchal - 42360 PANISSIÈRES - FRANCE - +33 4 77 27 60 60

Non-contractual photos and colors - Indicative fitting - Fitting may vary depending on supports selected