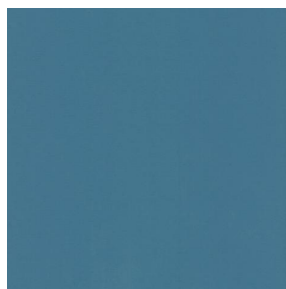


NOCTURNE



NOCTURNE Océan 91



NOCTURNE Arctique 58



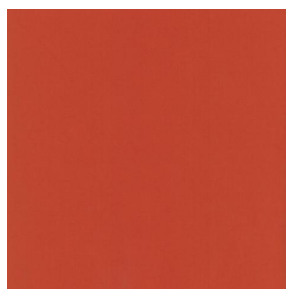
NOCTURNE Cyan 90



NOCTURNE Mousse 92



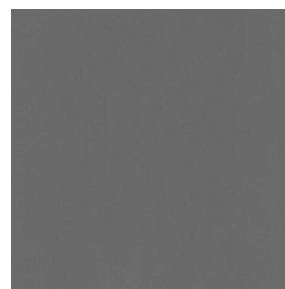
NOCTURNE Abricot 08



NOCTURNE Orange 15



NOCTURNE Fuchsia 33



NOCTURNE Sienne 29



NOCTURNE Perle 96



NOCTURNE Grisé 03



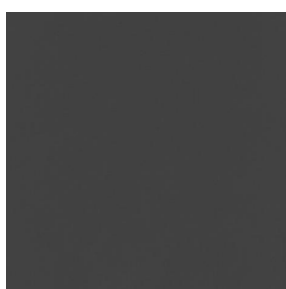
NOCTURNE Crème 02



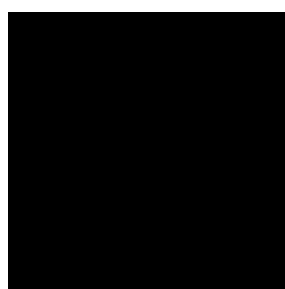
NOCTURNE Mastic 48



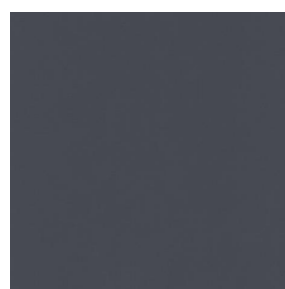
NOCTURNE Brun 23



NOCTURNE Taupe 95



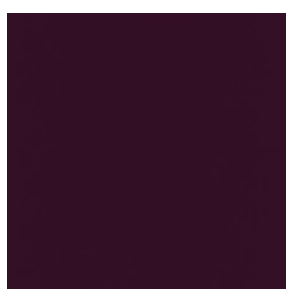
NOCTURNE Noir 10



NOCTURNE anthracite
38



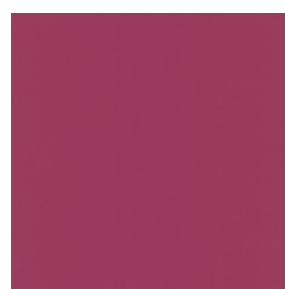
NOCTURNE absinthe
132



NOCTURNE aubergine
27



NOCTURNE Bordeaux
04



NOCTURNE Rubis 59



(Headquarters) SOTEXPRO - 510 route de Montchal - 42360 PANISSIÈRES - FRANCE - +33 4 77 27 60 60
(Showroom) Le LAB' SOTEXPRO - 4 rue du Mail - 75002 PARIS - FRANCE

Non-contractual photos and colors - Indicative fitting - Fitting may vary depending on support selected

NOCTURNE



NOCTURNE Saumon
143



NOCTURNE Or 94



NOCTURNE Terre 107



NOCTURNE Amande 75



NOCTURNE
Bergamotte 121



NOCTURNE Tilleul 103



NOCTURNE Prairie 125



NOCTURNE Sapin 126



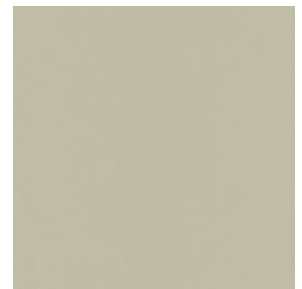
NOCTURNE Ecume 82



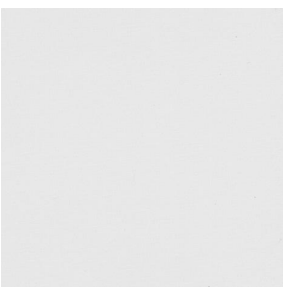
NOCTURNE Beige 63



NOCTURNE Mordoré
133



NOCTURNE Galet 147

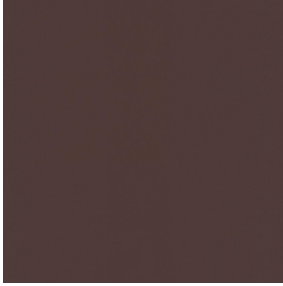


NOCTURNE BPI 00



(Headquarters) SOTEXPRO - 510 route de Montchal - 42360 PANISSIÈRES - FRANCE - +33 4 77 27 60 60
(Showroom) Le LAB' SOTEXPRO - 4 rue du Mail - 75002 PARIS - FRANCE

Non-contractual photos and colors - Indicative fitting - Fitting may vary depending on support selected



NOCTURNE Chamois 111

Ce tissu uni est très performant pour l'occultation. Il se décline dans une gamme de coloris très variée

Propriétés techniques



Non feu






Thermique

Applications Store bateau - Parois japonaises - Doublure - Rideaux

Composition 100 % polyester avec envers acrylique floqué blanc

Poids 280 g/m² Laize 280 cm

Sens Contre sens ou sens normal Raccord ↔ cm ↓ cm

Conseils d'entretien     

Minimum commande 1 mètre(s) linéaire(s)

Caractéristiques techniques

| | | | |
|--------------------|-------------------------------------|--------------------------|--------|
| Non feu | M1 / BS 5867 TYPE C / B1 / IMO PASS | | |
| Indices optiques | Réflexion lumière : | 71 % | |
| | Absorption lumière : | 29 % | |
| | Transmission lumière : | 0 % | |
| Indices thermiques | réflexion solaire : | 66 % | |
| | absorption solaire : | 34 % | |
| | Transmission solaire : | 0 % | |
| | Transmission UV : | 0 % | |
| | Gtot : | Gt 35 % Fc 60 % | |
| Résistance | Solidité lumière (unités Class/8) | 4 | |
| | Boulochage | 3-4 | |
| | Stabilité dimensionnelle (%) | Chaîne | -0.5 |
| | | Trame | 0 |
| | | Martindale (Cycles) | 40000 |
| | Allongement rupture (mm) | Chaîne | 19 |
| | | Trame | 22 |
| | | Résistance rupture (daN) | Chaîne |
| | Trame | | 57 |



(Headquarters) SOTEXPRO - 510 route de Montchal - 42360 PANISSIÈRES - FRANCE - +33 4 77 27 60 60
(Showroom) Le LAB' SOTEXPRO - 4 rue du Mail - 75002 PARIS - FRANCE

Non-contractual photos and colors - Indicative fitting - Fitting may vary depending on support selected