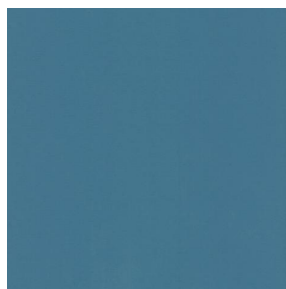


NOCTURNE



NOCTURNE Océan 91



NOCTURNE Arctique 58



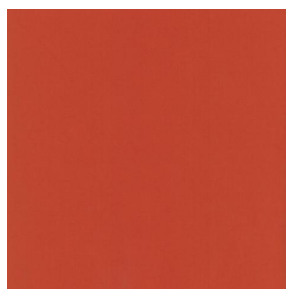
NOCTURNE Cyan 90



NOCTURNE Mousse 92



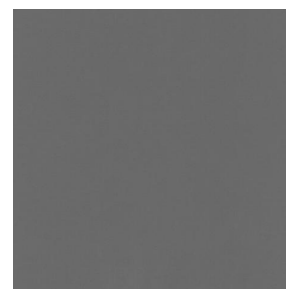
NOCTURNE Abricot 08



NOCTURNE Orange 15



NOCTURNE Fuchsia 33



NOCTURNE Sienne 29



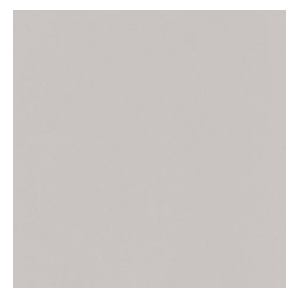
NOCTURNE Perle 96



NOCTURNE Grisé 03



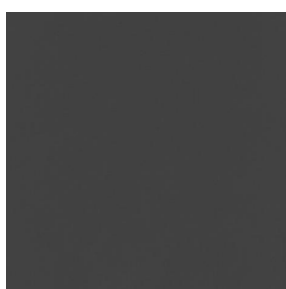
NOCTURNE Crème 02



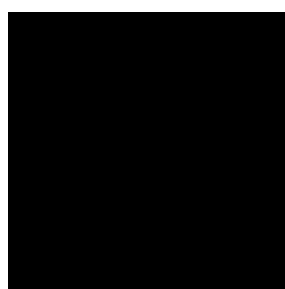
NOCTURNE Mastic 48



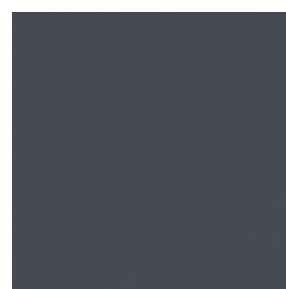
NOCTURNE Brun 23



NOCTURNE Taupe 95



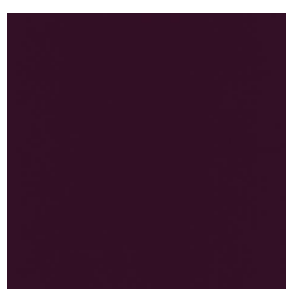
NOCTURNE Noir 10



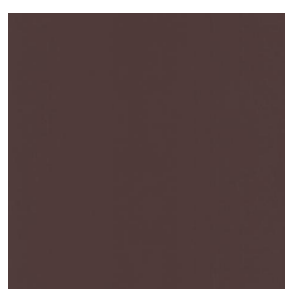
NOCTURNE anthracite
38



NOCTURNE absinthe
132



NOCTURNE aubergine
27



NOCTURNE Chamois
111



NOCTURNE Bordeaux
04



(Headquarters) SOTEXPRO - 510 route de Montchal - 42360 PANISSIÈRES - FRANCE - +33 4 77 27 60 60
(Showroom) Le LAB' SOTEXPRO - 4 rue du Mail - 75002 PARIS - FRANCE

Non-contractual photos and colors - Indicative fitting - Fitting may vary depending on support selected

NOCTURNE



NOCTURNE Rubis 59



NOCTURNE Saumon
143



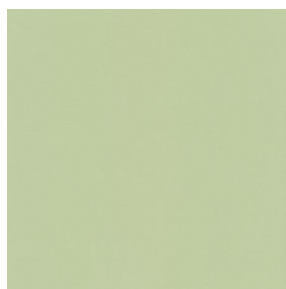
NOCTURNE Or 94



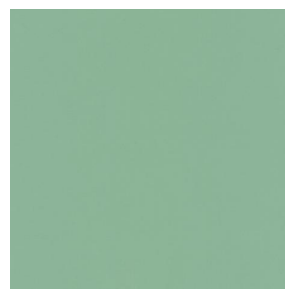
NOCTURNE Terre 107



NOCTURNE Amande 75



NOCTURNE
Bergamotte 121



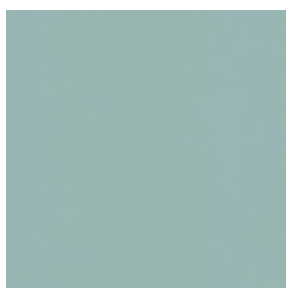
NOCTURNE Tilleul 103



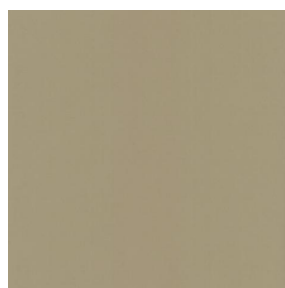
NOCTURNE Prairie 125



NOCTURNE Sapin 126



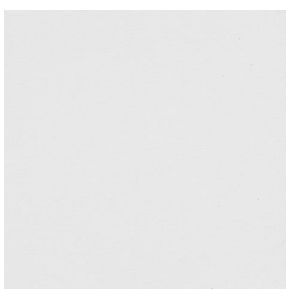
NOCTURNE Ecume 82



NOCTURNE Beige 63



NOCTURNE Mordoré
133



NOCTURNE BPI 00



(Headquarters) SOTEXPRO - 510 route de Montchal - 42360 PANISSIÈRES - FRANCE - +33 4 77 27 60 60
(Showroom) Le LAB' SOTEXPRO - 4 rue du Mail - 75002 PARIS - FRANCE

Non-contractual photos and colors - Indicative fitting - Fitting may vary depending on support selected

NOCTURNE Galet 147

Ce tissu est très performant pour l'occultation. Il se décline dans une gamme de coloris très variée

Propriétés techniques



Non feu



Thermique

Applications Store bateau - Parois japonaises - Doublure - Rideaux

Composition 100 % polyester avec envers acrylique floqué blanc

Poids 280 g/m² Laize 280 cm

Sens Contre sens ou sens normal Raccord ↔ cm ↓ cm

Conseils d'entretien     

Minimum commande 1 mètre(s) linéaire(s)

Caractéristiques techniques

Non feu	M1 / BS 5867 TYPE C / B1 / IMO PASS		
Indices optiques	Réflexion lumière :	71 %	
	Absorption lumière :	29 %	
	Transmission lumière :	0 %	
Indices thermiques	réflexion solaire :	66 %	
	absorption solaire :	34 %	
	Transmission solaire :	0 %	
	Transmission UV :	0 %	
	Gtot :	Gt 35 % Fc 60 %	
Résistance	Solidité lumière (unités Class/8)	4	
	Boulochage	3-4	
	Stabilité dimensionnelle (%)	Chaîne	-0,5
		Trame	0
		Martindale (Cycles)	40000
	Allongement rupture (mm)	Chaîne	19
		Trame	22
		Résistance rupture (daN)	
	Chaîne	37	
	Trame	57	



(Headquarters) SOTEXPRO - 510 route de Montchal - 42360 PANISSIÈRES - FRANCE - +33 4 77 27 60 60
(Showroom) Le LAB' SOTEXPRO - 4 rue du Mail - 75002 PARIS - FRANCE

Non-contractual photos and colors - Indicative fitting - Fitting may vary depending on supports selected