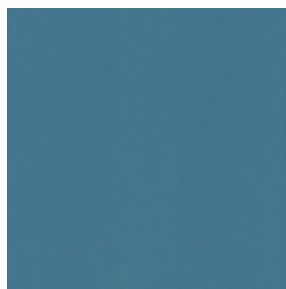


# NOCTURNE



NOCTURNE Océan 91



NOCTURNE Arctique 58



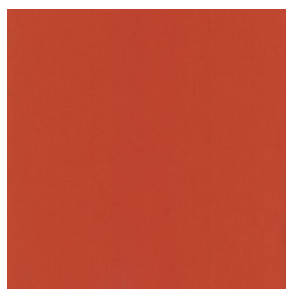
NOCTURNE Cyan 90



NOCTURNE Mousse 92



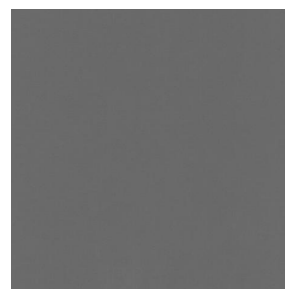
NOCTURNE Abricot 08



NOCTURNE Orange 15



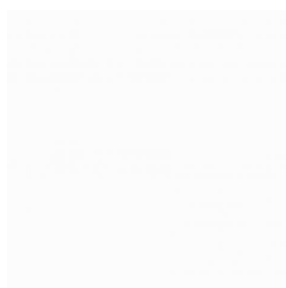
NOCTURNE Fuchsia 33



NOCTURNE Sienne 29



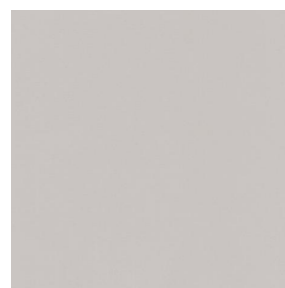
NOCTURNE Perle 96



NOCTURNE Grisé 03



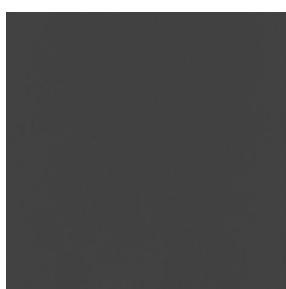
NOCTURNE Crème 02



NOCTURNE Mastic 48



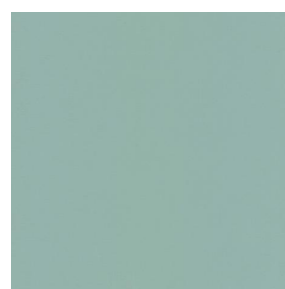
NOCTURNE Brun 23



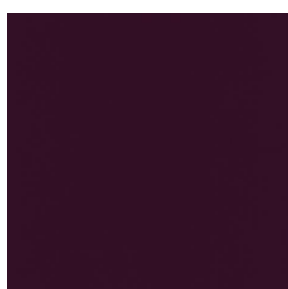
NOCTURNE Taupe 95



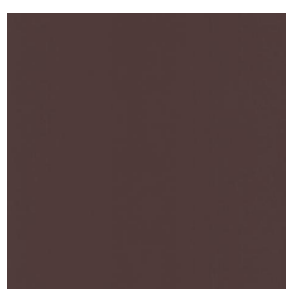
NOCTURNE anthracite  
38



NOCTURNE absinthe  
132



NOCTURNE aubergine  
27



NOCTURNE Chamois  
111



NOCTURNE Bordeaux  
04



NOCTURNE Rubis 59



sotexpro

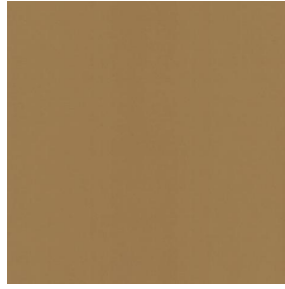
(Headquarters) SOTEXPRO - 510 route de Montchal - 42360 PANISSIÈRES - FRANCE - +33 4 77 27 60 60  
(Showroom) Le LAB' SOTEXPRO - 4 rue du Mail - 75002 PARIS - FRANCE

Non-contractual photos and colors - Indicative fitting - Fitting may vary depending on support selected

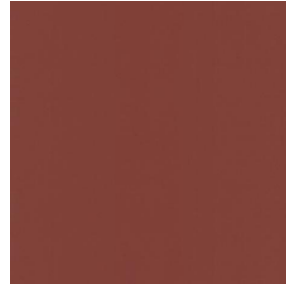
# NOCTURNE



NOCTURNE Saumon  
143



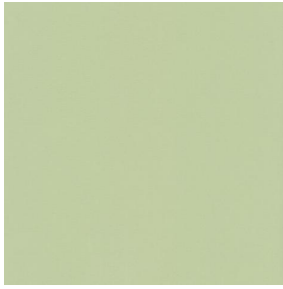
NOCTURNE Or 94



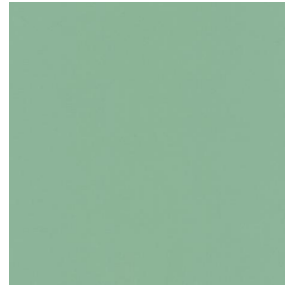
NOCTURNE Terre 107



NOCTURNE Amande 75



NOCTURNE  
Bergamotte 121



NOCTURNE Tilleul 103



NOCTURNE Prairie 125



NOCTURNE Sapin 126



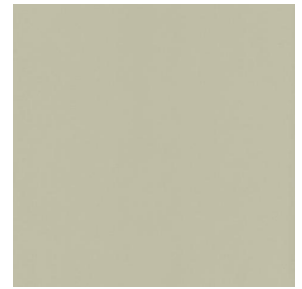
NOCTURNE Ecume 82



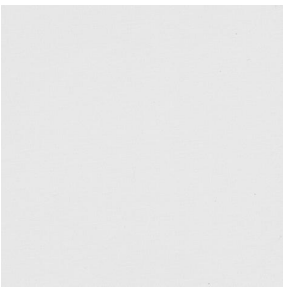
NOCTURNE Beige 63



NOCTURNE Mordoré  
133



NOCTURNE Galet 147

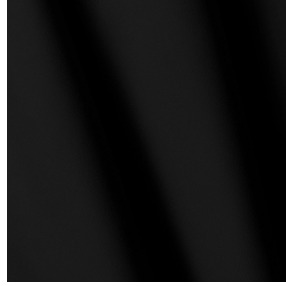


NOCTURNE BPI 00



(Headquarters) SOTEXPRO - 510 route de Montchal - 42360 PANISSIÈRES - FRANCE - +33 4 77 27 60 60  
(Showroom) Le LAB' SOTEXPRO - 4 rue du Mail - 75002 PARIS - FRANCE

Non-contractual photos and colors - Indicative fitting - Fitting may vary depending on support selected



# NOCTURNE Noir 10

Ce tissu uni est très performant pour l'occultation, il se décline dans une gamme de coloris très variée.

## Propriétés techniques



Non feu



Thermique

Applications Store bateau - Parois japonaises - Doublure - Rideaux

Composition 100% polyester avec envers acrylique floqué blanc

Poids 280 g/m<sup>2</sup> Laize 280 cm

Sens Contre sens ou sens normal Raccord ↔ cm ↓ cm

Conseils d'entretien

Minimum commande 1 mètre(s) linéaire(s)

## Caractéristiques techniques

Non feu

M1 / BS 5867 TYPE C / B1 / IMO PASS

Indices optiques

Réflexion lumière : 71 %

Absorption lumière : 29 %

Transmission lumière : 0 %

Indices thermiques

réflexion solaire : 66 %

absorption solaire : 34 %

Transmission solaire : 0 %

Transmission UV : 0 %

Gtot : Gt 35 % Fc 60 %

Résistance

Solidité lumière (unités Class/8) 4

Boulochage 3-4

Stabilité dimensionnelle (%)

Chaîne -0,5

Trame 0

Martindale (Cycles) 40000

Allongement rupture (mm)

Chaîne 19

Trame 22

Résistance rupture (daN)

Chaîne 37

Trame 57



(Headquarters) SOTEXPRO - 510 route de Montchal - 42360 PANISSIÈRES - FRANCE - +33 4 77 27 60 60  
(Showroom) Le LAB' SOTEXPRO - 4 rue du Mail - 75002 PARIS - FRANCE

Non-contractual photos and colors - Indicative fitting - Fitting may vary depending on support selected