

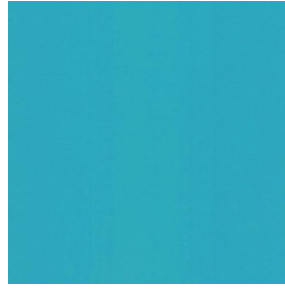
NOCTURNE



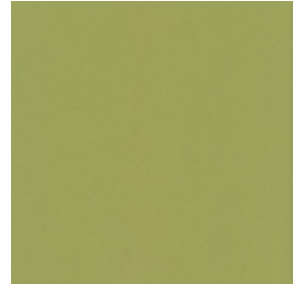
NOCTURNE Océan 91



NOCTURNE Arctique 58



NOCTURNE Cyan 90



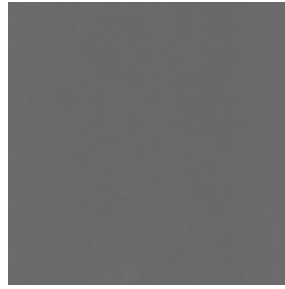
NOCTURNE Mousse 92



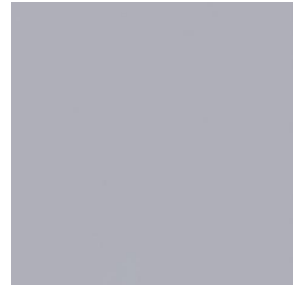
NOCTURNE Abricot 08



NOCTURNE Fuchsia 33



NOCTURNE Sienne 29



NOCTURNE Perle 96



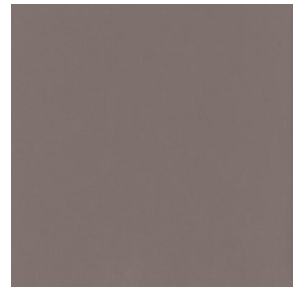
NOCTURNE Gris  03



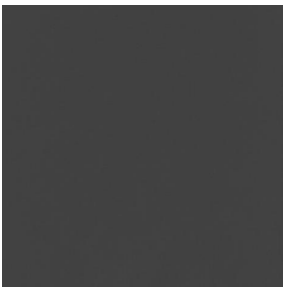
NOCTURNE Cr me 02



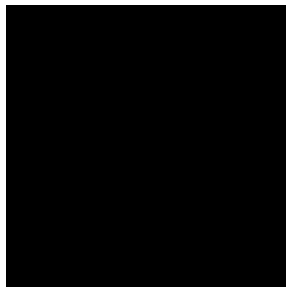
NOCTURNE Mastic 48



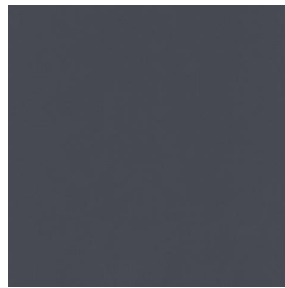
NOCTURNE Brun 23



NOCTURNE Taupe 95



NOCTURNE Noir 10



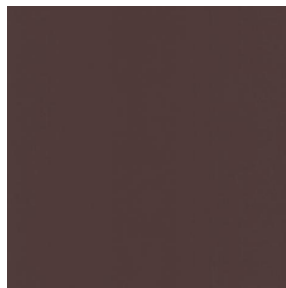
NOCTURNE anthracite
38



NOCTURNE absinthe
132



NOCTURNE aubergine
27



NOCTURNE Chamois
111



NOCTURNE Bordeaux
04



NOCTURNE Rubis 59



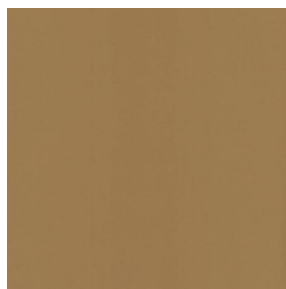
(Headquarters) SOTEXPRO - 510 route de Montchal - 42360 PANISSI RES - FRANCE - +33 4 77 27 60 60
(Showroom) Le LAB' SOTEXPRO - 4 rue du Mail - 75002 PARIS - FRANCE

Non-contractual photos and colors - Indicative fitting - Fitting may vary depending on support selected

NOCTURNE



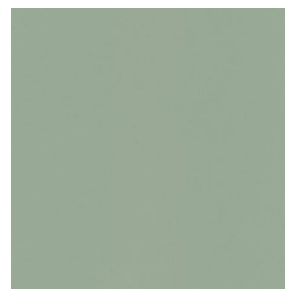
NOCTURNE Saumon
143



NOCTURNE Or 94



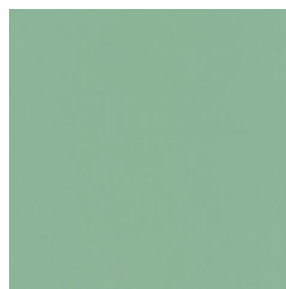
NOCTURNE Terre 107



NOCTURNE Amande 75



NOCTURNE
Bergamotte 121



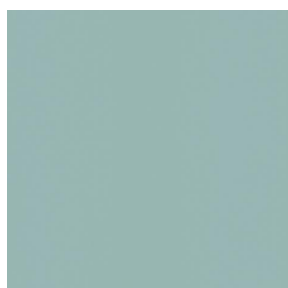
NOCTURNE Tilleul 103



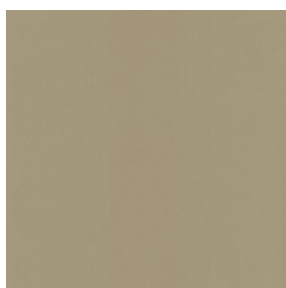
NOCTURNE Prairie 125



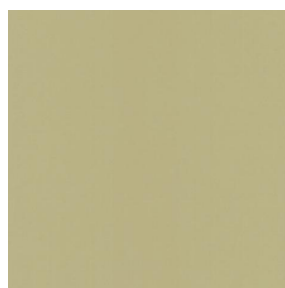
NOCTURNE Sapin 126



NOCTURNE Ecume 82



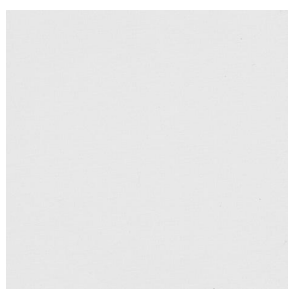
NOCTURNE Beige 63



NOCTURNE Mordoré
133



NOCTURNE Galet 147

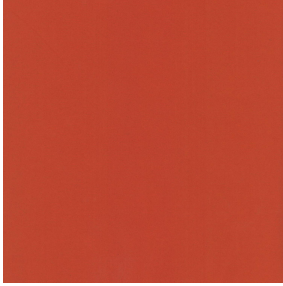


NOCTURNE BPI 00



(Headquarters) SOTEXPRO - 510 route de Montchal - 42360 PANISSIÈRES - FRANCE - +33 4 77 27 60 60
(Showroom) Le LAB' SOTEXPRO - 4 rue du Mail - 75002 PARIS - FRANCE

Non-contractual photos and colors - Indicative fitting - Fitting may vary depending on support selected



NOCTURNE Orange 15

Ce tissu uni est très performant pour l'occultation, il se décline dans une gamme de coloris très variée.

Propriétés techniques



Non feu



Thermique

Applications Store bateau - Parois japonaises - Doublure - Rideaux

Composition 100% polyester avec envers acrylique floqué blanc

Poids 280 g/m² Laize 280 cm

Sens Contre sens ou sens normal Raccord ↔ cm ↓ cm

Conseils d'entretien     

Minimum commande 1 mètre(s) linéaire(s)

Caractéristiques techniques

Non feu	M1 / BS 5867 TYPE C / B1 / IMO PASS		
Indices optiques	Réflexion lumière :	71 %	
	Absorption lumière :	29 %	
	Transmission lumière :	0 %	
Indices thermiques	réflexion solaire :	66 %	
	absorption solaire :	34 %	
	Transmission solaire :	0 %	
	Transmission UV :	0 %	
	Gtot :	Gt 35 % Fc 60 %	
Résistance	Solidité lumière (unités Class/8)	5	
	Boulochage	3-4	
	Stabilité dimensionnelle (%)	Chaîne	-0,5
		Trame	0
		Martindale (Cycles)	40000
	Allongement rupture (mm)	Chaîne	19
		Trame	22
	Résistance rupture (daN)	Chaîne	37
		Trame	57



(Headquarters) SOTEXPRO - 510 route de Montchal - 42360 PANISSIÈRES - FRANCE - +33 4 77 27 60 60
(Showroom) Le LAB' SOTEXPRO - 4 rue du Mail - 75002 PARIS - FRANCE

Non-contractual photos and colors - Indicative fitting - Fitting may vary depending on support selected