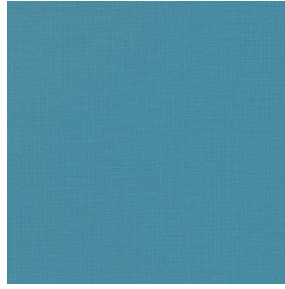


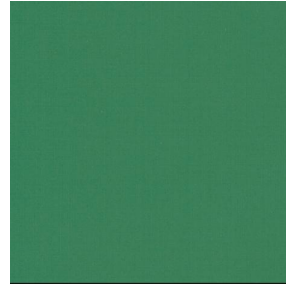
# OPALE 2



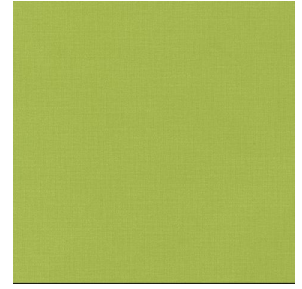
OPALE 2 Océan 91



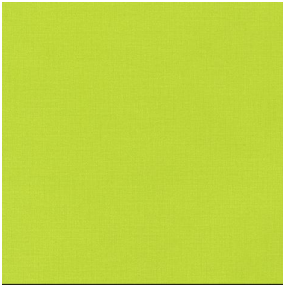
OPALE 2 Cyan 90



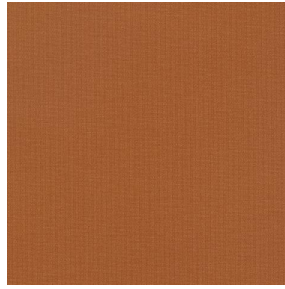
OPALE 2 Cactus 09



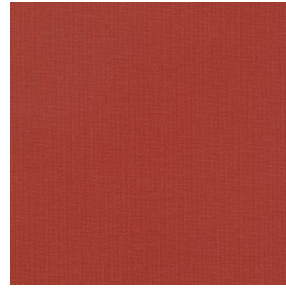
OPALE 2 Mousse 92



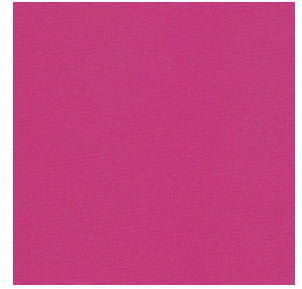
OPALE 2 Agrume 69



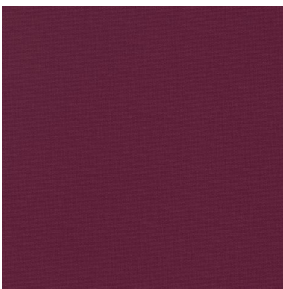
OPALE 2 Terracotta 65



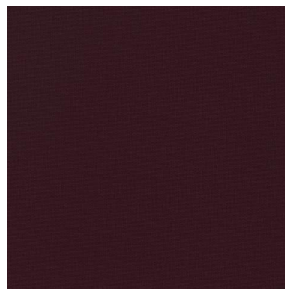
OPALE 2 Tomette 60



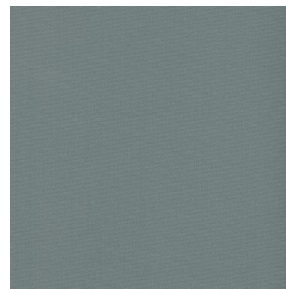
OPALE 2 Pivoine 57



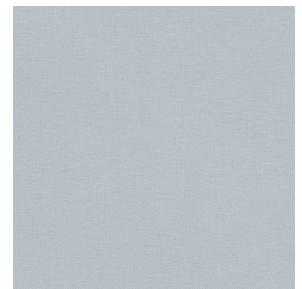
OPALE 2 Rubis 08



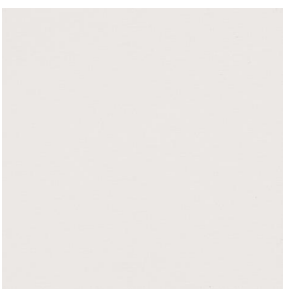
OPALE 2 Aubergine 27



OPALE 2 Anthracite 38



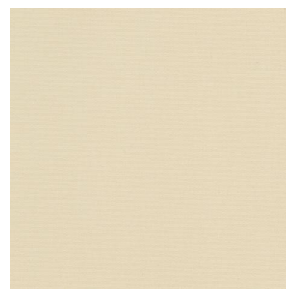
OPALE 2 Souris 40



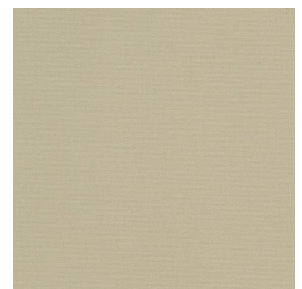
OPALE 2 Nacre 04



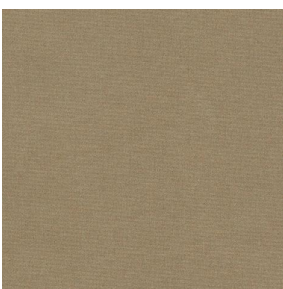
OPALE 2 Crème 02



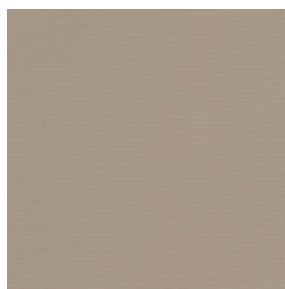
OPALE 2 Sable 67



OPALE 2 Beige 63



OPALE 2 Brun 23



OPALE 2 Mastic 48



OPALE 2 Moka 12



OPALE 2 Marine 25

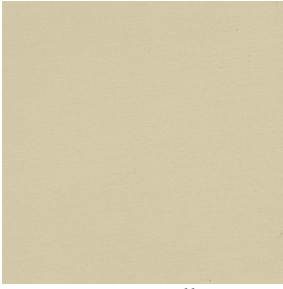


sotexpro

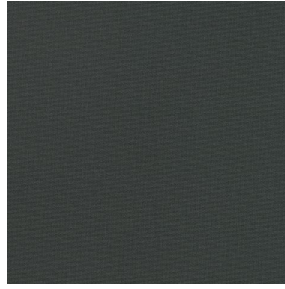
(Headquarters) SOTEXPRO - 510 route de Montchal - 42360 PANISSIÈRES - FRANCE - +33 4 77 27 60 60  
(Showroom) Le LAB' SOTEXPRO - 4 rue du Mail - 75002 PARIS - FRANCE

Non-contractual photos and colors - Indicative fitting - Fitting may vary depending on support selected

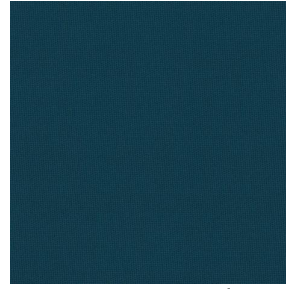
# OPALE 2



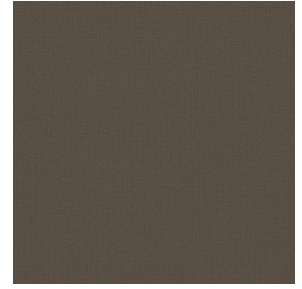
OPALE 2 Paille 06



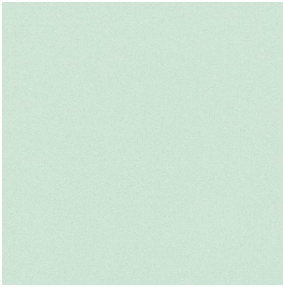
OPALE 2 Titanium 98



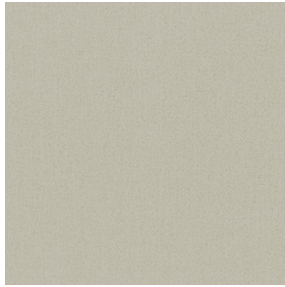
OPALE 2 emeraude 88



OPALE 2 taupe 95



OPALE 2 absinthe 132

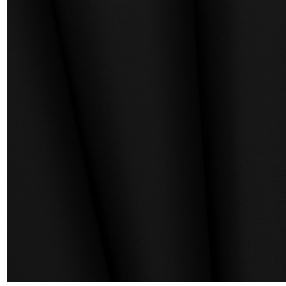


OPALE 2 lin 11



(Headquarters) SOTEXPRO - 510 route de Montchal - 42360 PANISSIÈRES - FRANCE - +33 4 77 27 60 60  
(Showroom) Le LAB' SOTEXPRO - 4 rue du Mail - 75002 PARIS - FRANCE

*Non-contractual photos and colors - Indicative fitting - Fitting may vary depending on support selected*



# OPALE 2 Noir 36

Ce tissu uni est très performant pour l'occultation, il se décline dans une gamme de coloris très variée.

## Propriétés techniques



Non feu

Applications Store bateau - Store enrouleur - Parois japonaises - Rideaux

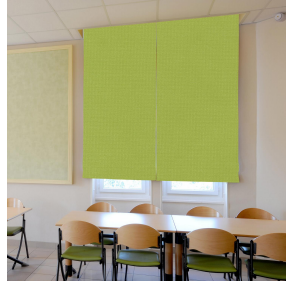
Composition 100% polyester avec envers acrylique floqué blanc

Poids 290 g/m<sup>2</sup> Laize 140 cm

Sens Sens normal Raccord ↔ cm ↓ cm

Conseils d'entretien     

Minimum commande 1 mètre(s) linéaire(s)



## Caractéristiques techniques

Non feu

M1 / IMO PASS

Indices optiques

Réflexion lumière : **72 %**

Absorption lumière : **28 %**

Transmission lumière : **0 %**

Indices thermiques

réflexion solaire : **65 %**

absorption solaire : **35 %**

Transmission solaire : **0 %**

Transmission UV : **0 %**

Gtot : **Gt 35 % Fc 60 %**

Résistance

Solidité lumière (unités Class/8) **5**

Allongement rupture (mm)

Chaîne **35**

Trame **11**



(Headquarters) SOTEXPRO - 510 route de Montchal - 42360 PANISSIÈRES - FRANCE - +33 4 77 27 60 60  
(Showroom) Le LAB' SOTEXPRO - 4 rue du Mail - 75002 PARIS - FRANCE

Non-contractual photos and colors - Indicative fitting - Fitting may vary depending on support selected