

# OPAQ



OPAQ Blanc 01



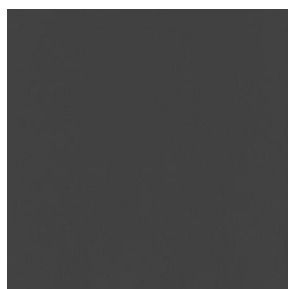
OPAQ Océan 91



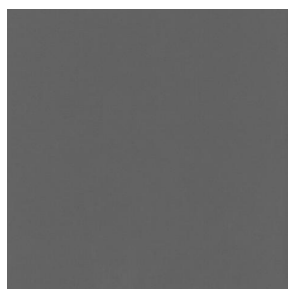
OPAQ Arctique 58



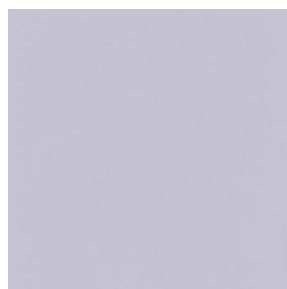
OPAQ Abricot 08



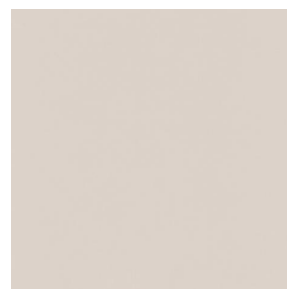
OPAQ Anthracite 38



OPAQ Sienne 29



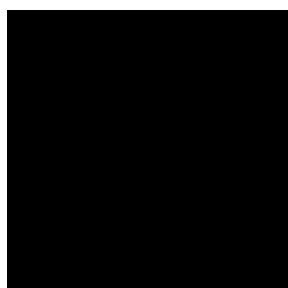
OPAQ Perle 96



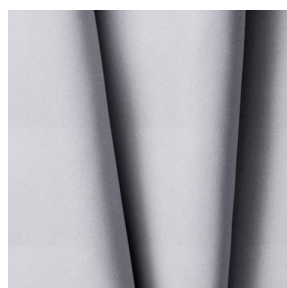
OPAQ Crème 02



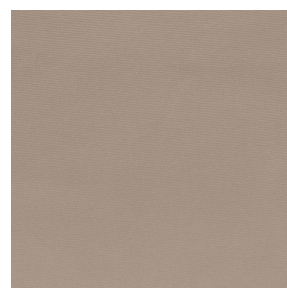
OPAQ Mastic 48



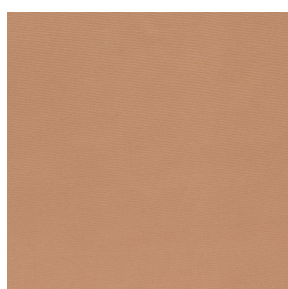
OPAQ Noir 10



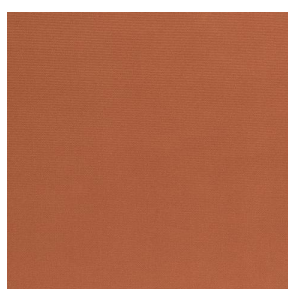
OPAQ BPI 00



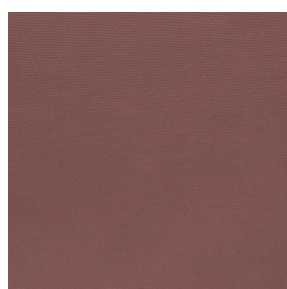
OPAQ Beige 63



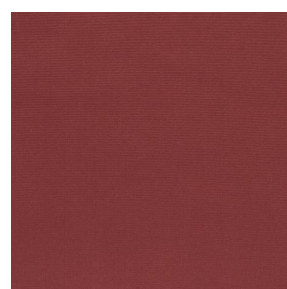
OPAQ Safran 49



OPAQ Terre 107



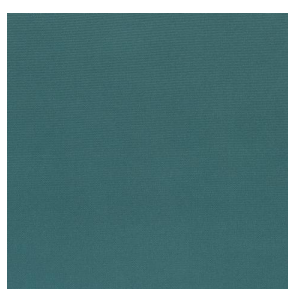
OPAQ Chamois 111



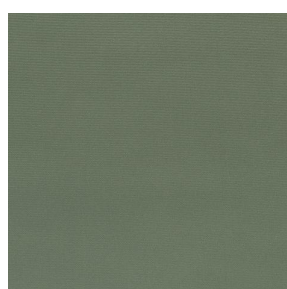
OPAQ Bordeaux 04



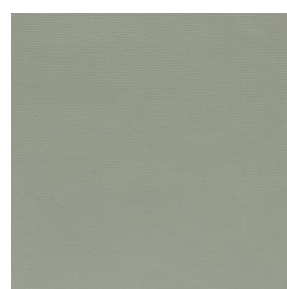
OPAQ Ecume 82



OPAQ Sapin 126



OPAQ Kaki 148

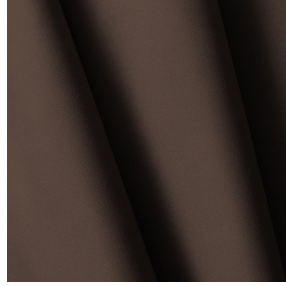
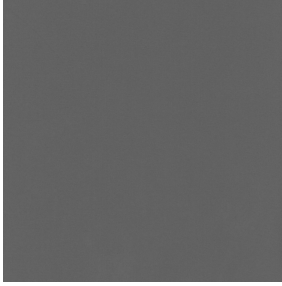


OPAQ Amande 75



(Headquarters) SOTEXPRO - 510 route de Montchal - 42360 PANISSIÈRES - FRANCE - +33 4 77 27 60 60  
(Showroom) Le LAB' SOTEXPRO - 4 rue du Mail - 75002 PARIS - FRANCE

Non-contractual photos and colors - Indicative fitting - Fitting may vary depending on support selected



# OPAQ Taupe 95

Ce tissu uni occultant est sans classement au feu.






## Propriétés techniques

**Applications** Store bateau - Parois japonaises - Doublure - Rideaux

**Composition** 100% polyester avec envers acrylique floqué blanc

**Poids** 280 g/m<sup>2</sup> **Laize** 280 cm

**Sens** Contre sens ou sens normal **Raccord** ↔ cm ↓ cm

**Conseils d'entretien**     

**Minimum commande** 25 mètre(s) linéaire(s)

## Caractéristiques techniques

Non feu

Non Classé

Indices optiques

Réflexion lumière : **82 %**

Absorption lumière : **18 %**

Transmission lumière : **0 %**

Indices thermiques

réflexion solaire : **74 %**

absorption solaire : **26 %**

Transmission solaire : **0 %**

Transmission UV : **0 %**

Gtot : **Gt 33 % Fc 55 %**

Résistance

Solidité lumière (unités Class/8) **5**

Stabilité dimensionnelle (%)

Chaîne **-0,5**

Trame **0**

Allongement rupture (mm)

Chaîne **26**

Trame **15**

Résistance rupture (daN)

Chaîne **62**

Trame **31**



(Headquarters) SOTEXPRO - 510 route de Montchal - 42360 PANISSIÈRES - FRANCE - +33 4 77 27 60 60  
(Showroom) Le LAB' SOTEXPRO - 4 rue du Mail - 75002 PARIS - FRANCE

Non-contractual photos and colors - Indicative fitting - Fitting may vary depending on support selected