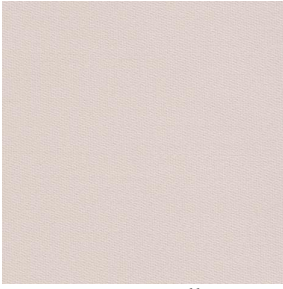
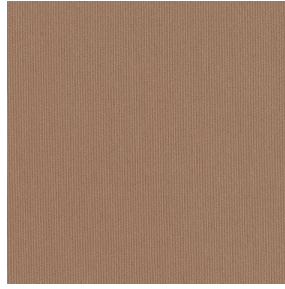


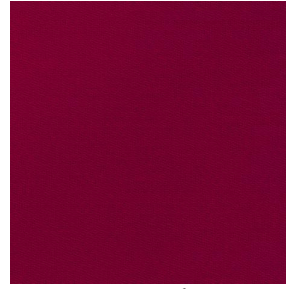
SADYNA



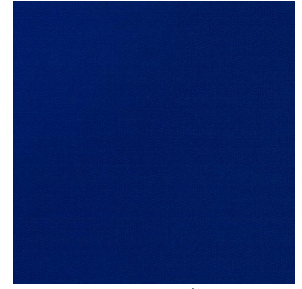
SADYNA Ficelle 09



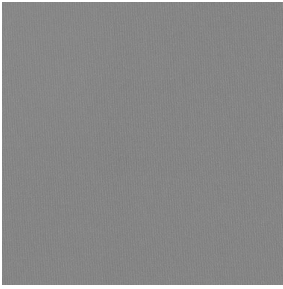
SADYNA Mastic 48



SADYNA Bordeaux 06



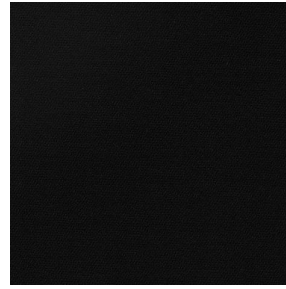
SADYNA Océan 19



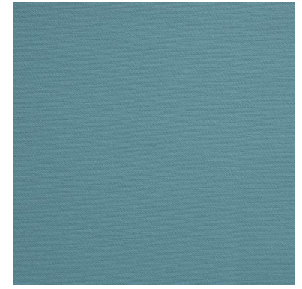
SADYNA Acier 18



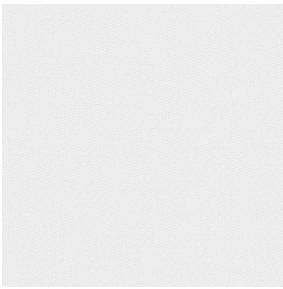
SADYNA Anthracite 38



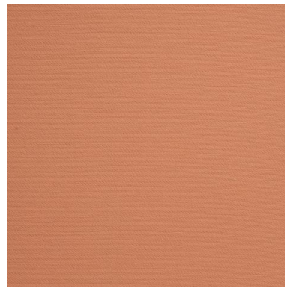
SADYNA Noir 10



SADYNA Glacier 43



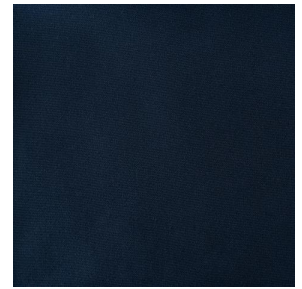
SADYNA Blanc 01



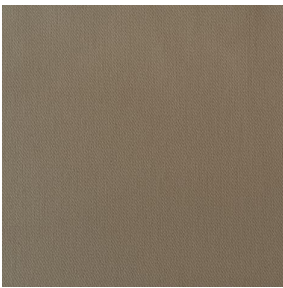
SADYNA Safran 49



SADYNA Lie de vin 202



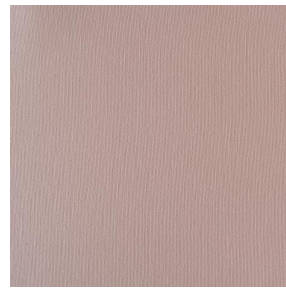
SADYNA Marine 25



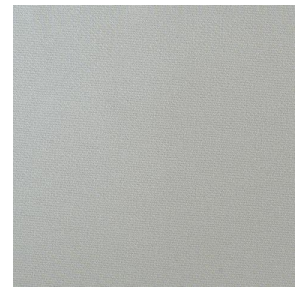
SADYNA Taupe 95



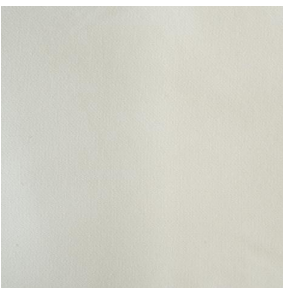
SADYNA Ciel 07



SADYNA Vieux rose 64



SADYNA Argent 73

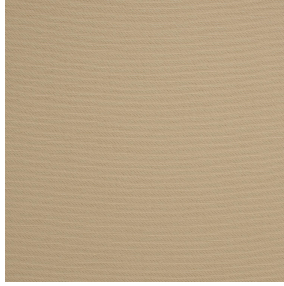


SADYNA Ivoire 115



(Headquarters) SOTEXPRO - 510 route de Montchal - 42360 PANISSIÈRES - FRANCE - +33 4 77 27 60 60

Non-contractual photos and colors - Indicative fitting - Fitting may vary depending on support selected



SADYNA Paille 83

Pare-solaire sergé lourd, le SADYNA offre de bonnes performances acoustiques. Il se décline en plusieurs colorations.

Propriétés techniques



Non feu



Thermique



Acoustique

Applications Store bateau - Parois japonaises - Cache sommier - Chemins de lit - Rideaux - Coussin - Décoration murale

Composition 100% polyester FR

Poids 320 g/m² **Laize** 280 cm

Sens Contre sens ou sens normal **Raccord** ↔ cm ↓ cm

Conseils d'entretien

Labels France Terre Textile (R016)

Certifications OEKO-TEX STANDARD 100 (CQ 1006/1)

Minimum commande 1 mètre(s) linéaire(s)

Caractéristiques techniques

Non feu	M1 / B1 / IMO PASS
Acoustique	Coeff. moyen de réduction sonore (NRC) : 0.88 Coeff. d'absorption acoustique pondéré (a _w) : 0.85 Classe d'absorption acoustique (a _w) : B
Indices optiques	Réflexion lumière : 59 % Absorption lumière : 28 % Transmission lumière : 13 %
Indices thermiques	réflexion solaire : 63 % absorption solaire : 20 % Transmission solaire : 17 % Transmission UV : 4 % Gtot : Gt 37 % Fc 62 %
Résistance	Solidité lumière (unités Class/8) 6 Boulochage 2-3 Stabilité dimensionnelle (%) Chaîne -1.5 Trame 0 Martindale (Cycles) 20000 Allongement rupture (mm) Chaîne 24 Trame 22 Résistance rupture (daN) Chaîne 150 Trame 160



(Headquarters) SOTEXPRO - 510 route de Montchal - 42360 PANISSIÈRES - FRANCE - +33 4 77 27 60 60

Non-contractual photos and colors - Indicative fitting - Fitting may vary depending on support selected