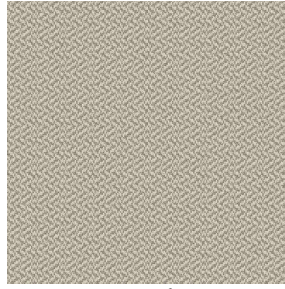


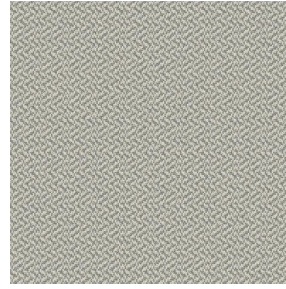
SETO MILO



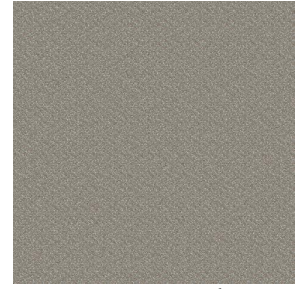
SETO MILO Coco 142



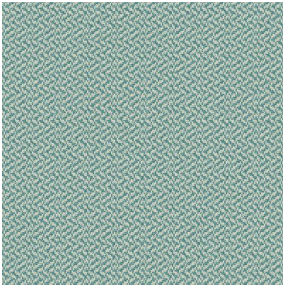
SETO MILO Chanvre 72



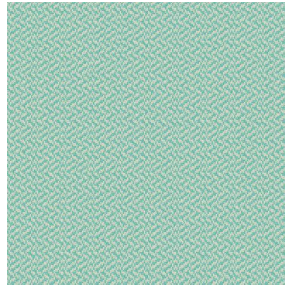
SETO MILO Jute 141



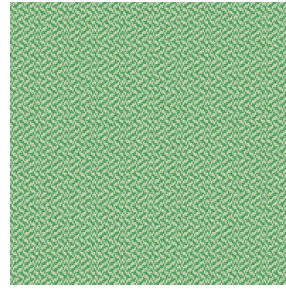
SETO MILO Sisal 140



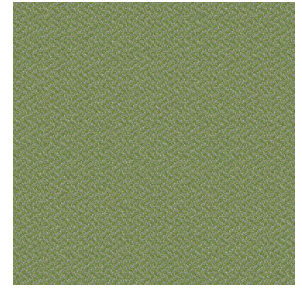
SETO MILO Lagon 110



SETO MILO Jade 116



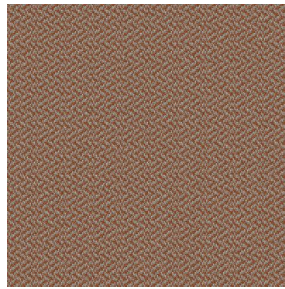
SETO MILO Prairie 125



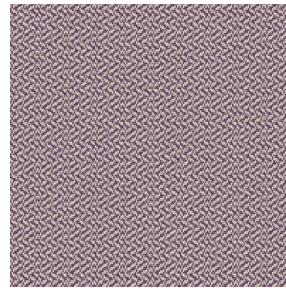
SETO MILO Mousse 92



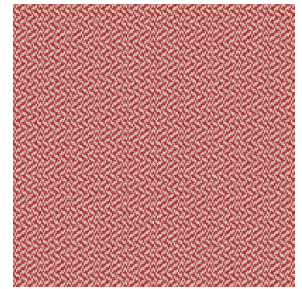
SETO MILO Mastic 48



SETO MILO Terre 107



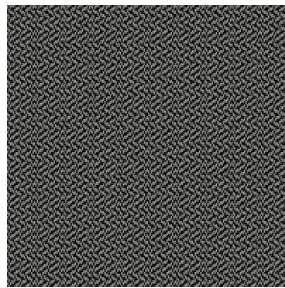
SETO MILO Saphir 106



SETO MILO Rouge 21



SETO MILO Or 94



SETO MILO Titanium 98



SETO MILO Violine 105



SETO MILO Bleu 41



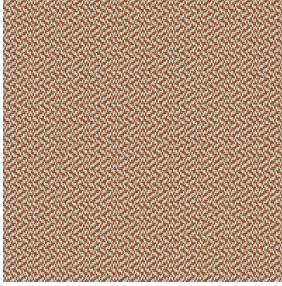
SETO MILO Celadon 135



sotexpro

(Headquarters) SOTEXPRO - 510 route de Montchal - 42360 PANISSIÈRES - FRANCE - +33 4 77 27 60 60
(Showroom) Le LAB' SOTEXPRO - 4 rue du Mail - 75002 PARIS - FRANCE

Non-contractual photos and colors - Indicative fitting - Fitting may vary depending on support selected



SETO MILO Châtaigne 55

Tissu siège

Propriétés techniques



Non feu

Applications Store bateau - Parois japonaises - Siège - Chemins de lit - Rideaux - Coussin - Décoration murale

Composition 100% polyester FR

Poids 420 g/m² Laize 150 cm

Sens Sens normal Raccord ↔ cm ↓ cm

Conseils d'entretien      

Labels France Terre Textile (R016)

Minimum commande 1 mètre(s) linéaire(s)

Caractéristiques techniques

Non feu

M1 / IMO PASS

Résistance

Boulochage	4
Stabilité dimensionnelle (%)	
Chaîne	-2
Trame	-1
Martindale (Cycles)	70000
Allongement rupture (mm)	
Chaîne	27
Trame	22
Résistance rupture (daN)	
Chaîne	110
Trame	100



(Headquarters) SOTEXPRO - 510 route de Montchal - 42360 PANISSIÈRES - FRANCE - +33 4 77 27 60 60
(Showroom) Le LAB' SOTEXPRO - 4 rue du Mail - 75002 PARIS - FRANCE

Non-contractual photos and colors - Indicative fitting - Fitting may vary depending on supports selected