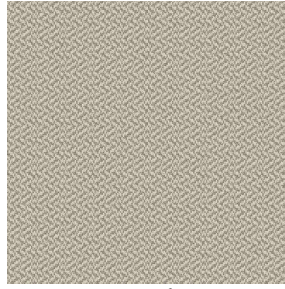


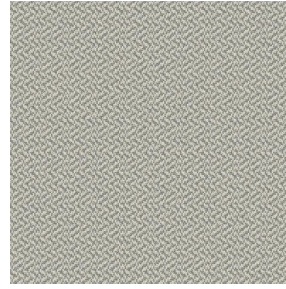
# SETO MILO



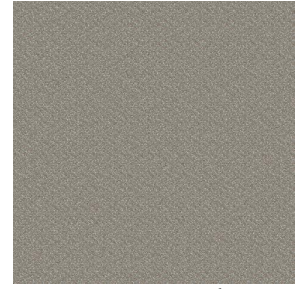
SETO MILO Coco 142



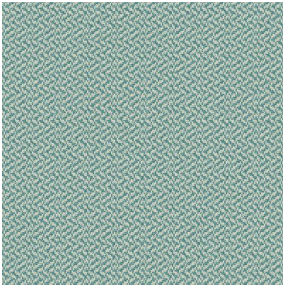
SETO MILO Chanvre 72



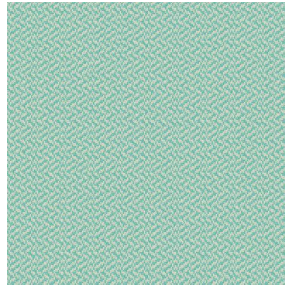
SETO MILO Jute 141



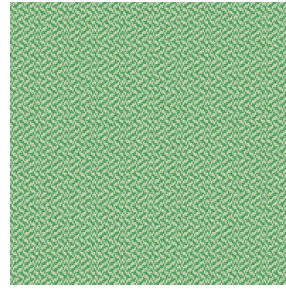
SETO MILO Sisal 140



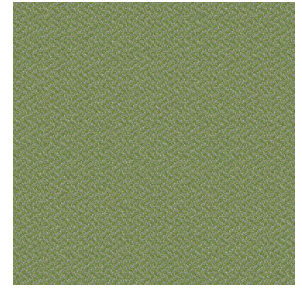
SETO MILO Lagon 110



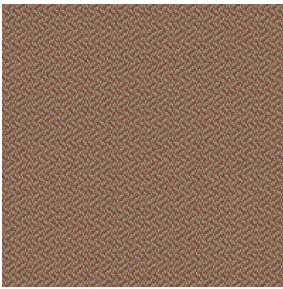
SETO MILO Jade 116



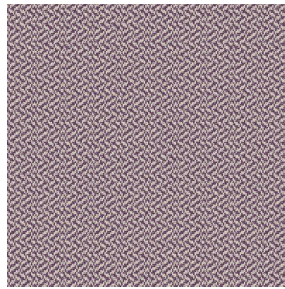
SETO MILO Prairie 125



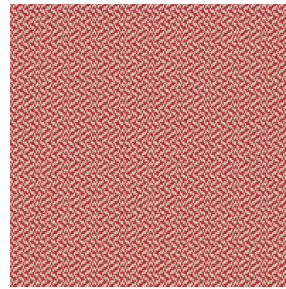
SETO MILO Mousse 92



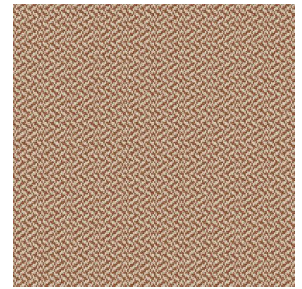
SETO MILO Terre 107



SETO MILO Saphir 106



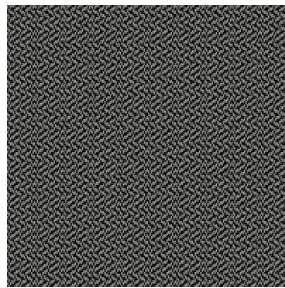
SETO MILO Rouge 21



SETO MILO Châtaigne  
55



SETO MILO Or 94



SETO MILO Titanium 98



SETO MILO Violine 105



SETO MILO Bleu 41

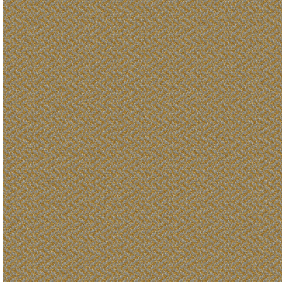


SETO MILO Celadon 135



(Headquarters) SOTEXPRO - 510 route de Montchal - 42360 PANISSIÈRES - FRANCE - +33 4 77 27 60 60  
(Showroom) Le LAB' SOTEXPRO - 4 rue du Mail - 75002 PARIS - FRANCE

*Non-contractual photos and colors - Indicative fitting - Fitting may vary depending on support selected*



# SETO MILO Mastic 48

Tissu siège

## Propriétés techniques





Non feu

**Applications** Décoration murale - Store bateau - Parois japonaises - Siège - Chemins de lit - Rideaux - Coussin

**Composition** 100% polyester FR

**Poids** 420 g/m<sup>2</sup> **Laize** 150 cm

**Sens** Sens normal **Raccord** ↔ cm ↓ cm

**Conseils d'entretien**     

**Labels** France Terre Textile (R016)

**Minimum commande** 1 mètre(s) linéaire(s)

## Caractéristiques techniques

Non feu

M1 / IMO PASS

Résistance

Boulochage	4
Stabilité dimensionnelle (%)	
Chaîne	-2
Trame	-1
Martindale (Cycles)	70000
Allongement rupture (mm)	
Chaîne	27
Trame	22
Résistance rupture (daN)	
Chaîne	110
Trame	100



(Headquarters) SOTEXPRO - 510 route de Montchal - 42360 PANISSIÈRES - FRANCE - +33 4 77 27 60 60  
(Showroom) Le LAB' SOTEXPRO - 4 rue du Mail - 75002 PARIS - FRANCE

Non-contractual photos and colors - Indicative fitting - Fitting may vary depending on supports selected