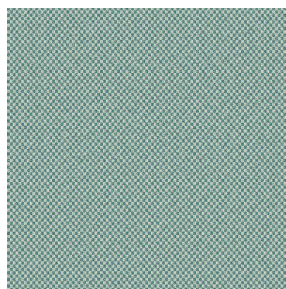
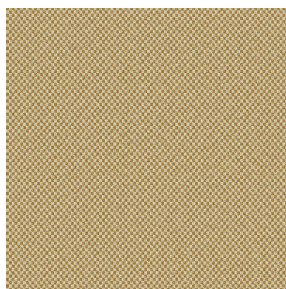


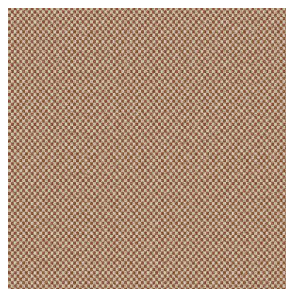
SIENTO COLOR



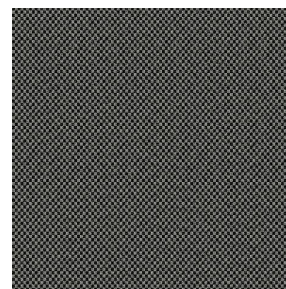
SIENTO COLOR Lagon
110



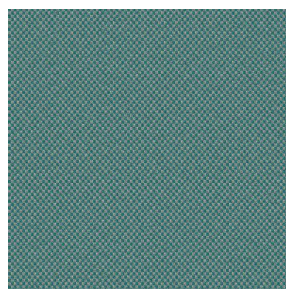
SIENTO COLOR Or 94



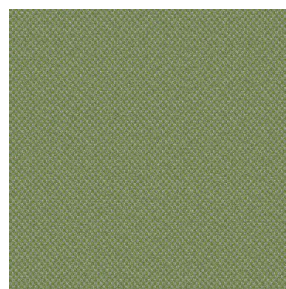
SIENTO COLOR
Châtaigne 55



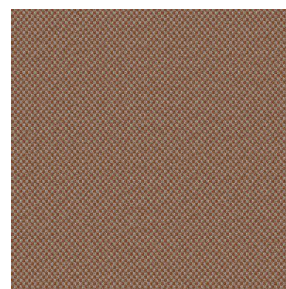
SIENTO COLOR
Titanium 98



SIENTO COLOR Céladon
135



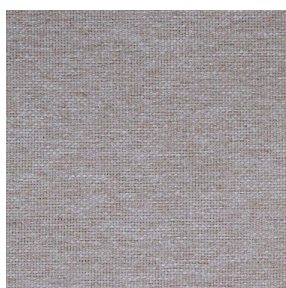
SIENTO COLOR Mousse
92



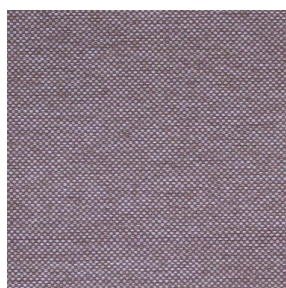
SIENTO COLOR Terre
107



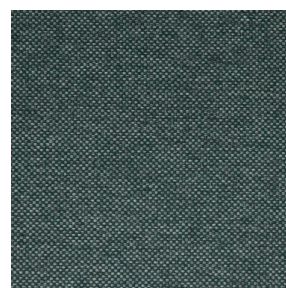
SIENTO COLOR Tilleul
103



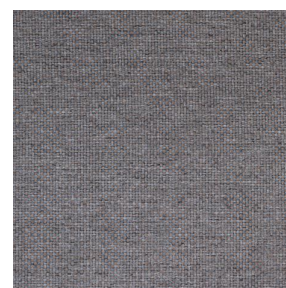
SIENTO COLOR Lilas 19



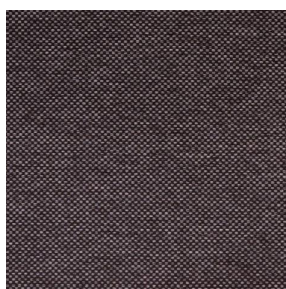
SIENTO COLOR
Hortensia 134



SIENTO COLOR Sapin
126



SIENTO COLOR Bronze
13

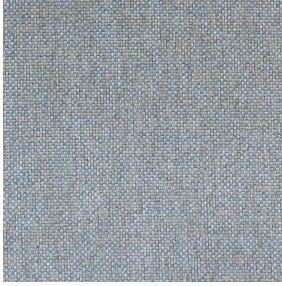


SIENTO COLOR Prune
84



(Headquarters) SOTEXPRO - 510 route de Montchal - 42360 PANISSIÈRES - FRANCE - +33 4 77 27 60 60
(Showroom) Le LAB' SOTEXPRO - 4 rue du Mail - 75002 PARIS - FRANCE

Non-contractual photos and colors - Indicative fitting - Fitting may vary depending on support selected



SIENTO COLOR Faïence

149

Naté lourd effet laine, le siento color est tissé avec des fils teints mélangés dont une trame colorée, ce qui lui confère cet aspect rustique et chiné.

Propriétés techniques



Non feu



Tissus recyclés

Applications Store bateau - Parois japonaises - Couvre lit - Siège - Chemins de lit - Rideaux - Coussin - Décoration murale

Composition 34% polyester FR recyclé/66% polyester FR

Poids 370 g/m² **Laize** 290 cm

Sens Contre sens ou sens normal **Raccord** ↔ cm ↓ cm

Conseils d'entretien

Labels France Terre Textile (R016)

Certifications OEKO-TEX STANDARD 100 Recyclé (CQ 1006/2)

Minimum commande 1 mètre(s) linéaire(s)

Caractéristiques techniques

Non feu

M1 / B1 / IMO PASS

Acoustique

Coeff. moyen de réduction sonore (NRC) : **0.71**

Coeff. d'absorption acoustique pondéré (a_w) : **0.60**

Classe d'absorption acoustique (a_w) : **C**

Résistance

Solidité lumière (unités Class/8) **6**

Boulochage **4**

Stabilité dimensionnelle (%)

Chaîne **-2**

Trame **-1**

Martindale (Cycles) **90000**

Allongement rupture (mm)

Chaîne **49**

Trame **44**

Résistance rupture (daN)

Chaîne **160**

Trame **210**



(Headquarters) SOTEXPRO - 510 route de Montchal - 42360 PANISSIÈRES - FRANCE - +33 4 77 27 60 60
(Showroom) Le LAB' SOTEXPRO - 4 rue du Mail - 75002 PARIS - FRANCE

Non-contractual photos and colors - Indicative fitting - Fitting may vary depending on supports selected