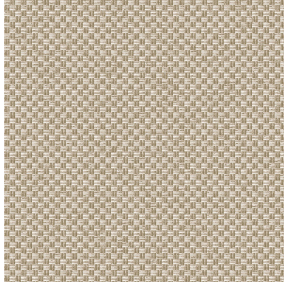


3141 bpi 00  
Support d'impression



CHARLOTTE Beige 63  
Motif d'impression



Visuel ne prenant pas en compte le support d'impression, le rendu final pouvant varier en fonction du support choisi.

# Support d'impression 3141 bpi 00

## Motif d'impression CHARLOTTE Beige 63

Support voile pour impression numérique.

### Propriétés techniques



Non feu



Transparent

Applications Store bateau - Parois japonaises - Rideaux

Composition polyester/polyester FR

Poids 50 g/m²

Laize 290 cm

Sens Contre sens

Raccord ↔ 0.0 cm ↓ 0.0 cm

Conseils d'entretien     

Label France Terre Textile / OEKO-TEX STANDARD 100

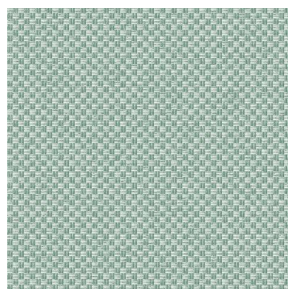
Minimum commande 25 mètre(s) linéaire(s)

## Caractéristiques techniques

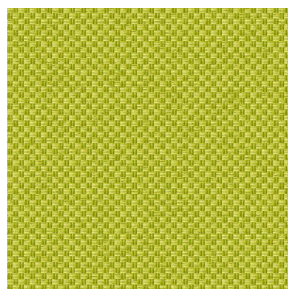
Non feu	M1 / B1 / IMO PASS	
Indices optiques	Réflexion lumière :	25 %
	Absorption lumière :	4 %
	Transmission lumière :	71 %
Voile transparent	Oui	
Indices thermiques	réflexion solaire :	25 %
	absorption solaire :	3 %
	Transmission solaire :	72 %
	Transmission UV :	65 %
	Gtot :	Gt 50 % Fc 85 %
Résistance	Solidité lumière (unités Class/8)	6
	Stabilité dimensionnelle (%)	
	Chaîne	-1
	Trame	0
	Allongement rupture (mm)	
	Chaîne	28
	Trame	34
	Résistance rupture (daN)	
	Chaîne	30
	Trame	36



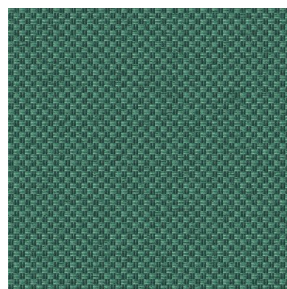
## Motif d'impression CHARLOTTE



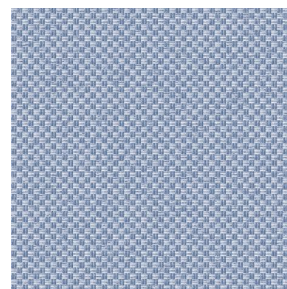
CHARLOTTE Absinthe  
132



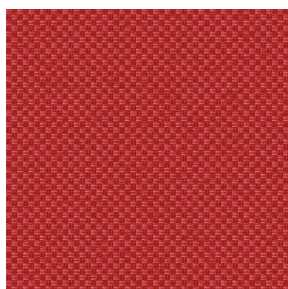
CHARLOTTE Anis 62



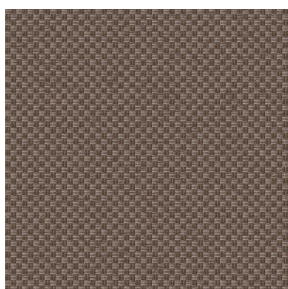
CHARLOTTE Bouteille  
101



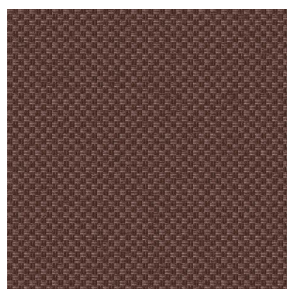
CHARLOTTE Brume 47



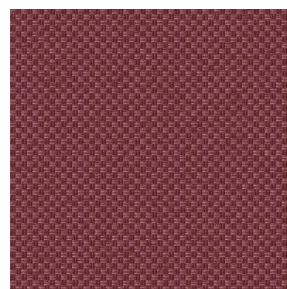
CHARLOTTE Cerise 66



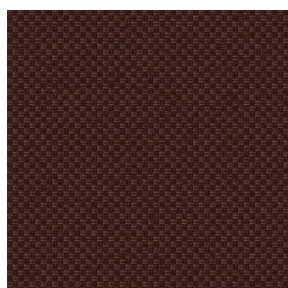
CHARLOTTE Chamois  
111



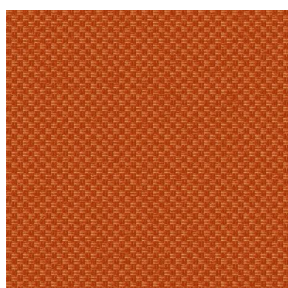
CHARLOTTE Chataigne  
55



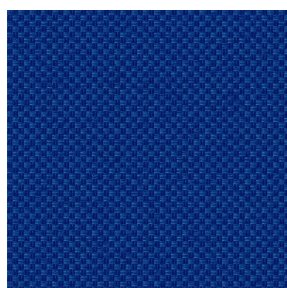
CHARLOTTE Chaudron  
118



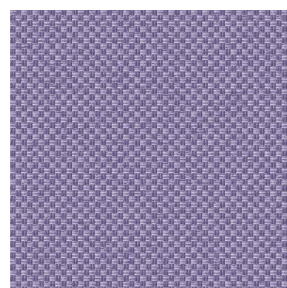
CHARLOTTE Chocolat  
70



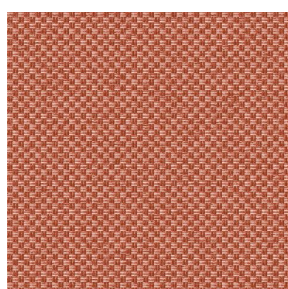
CHARLOTTE Citrouille  
136



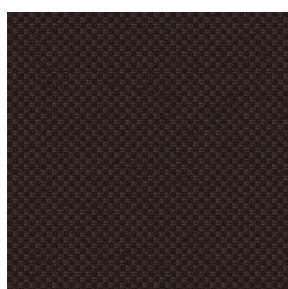
CHARLOTTE Cobalt 114



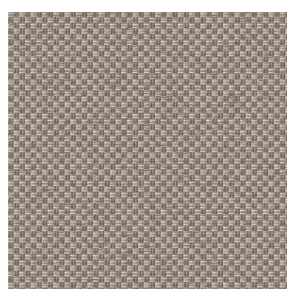
CHARLOTTE Crepuscule  
45



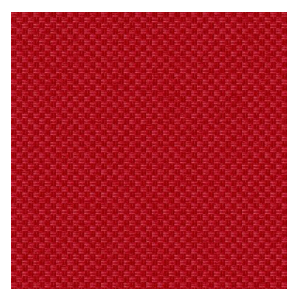
CHARLOTTE Cuivre 50



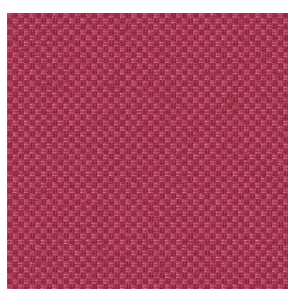
CHARLOTTE Ebene 124



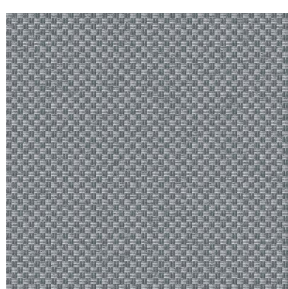
CHARLOTTE Ficelle 09



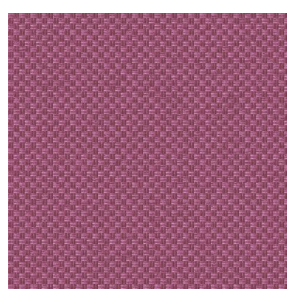
CHARLOTTE Fiesta 131



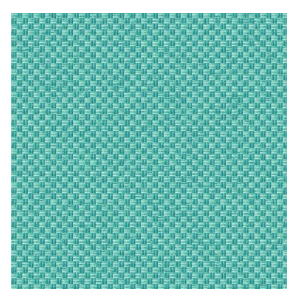
CHARLOTTE Grenat 56



CHARLOTTE Gris 97



CHARLOTTE Hortensia  
134



CHARLOTTE Lagon 110

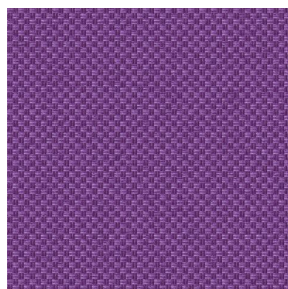


(Headquarters) SOTEXPRO - 510 route de Montchal - 42360 PANISSIÈRES - FRANCE - +33 4 77 27 60 60  
(Showroom) Le LAB' SOTEXPRO - 4 rue du Mail - 75002 PARIS - FRANCE

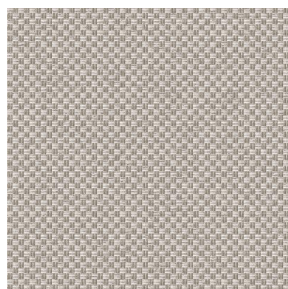
Non-contractual photos and colors - Indicative fitting - Fitting may vary depending on support selected



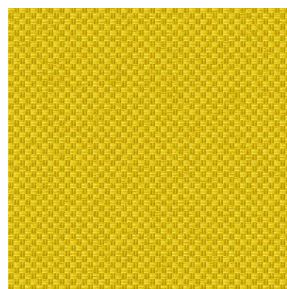
## Motif d'impression CHARLOTTE



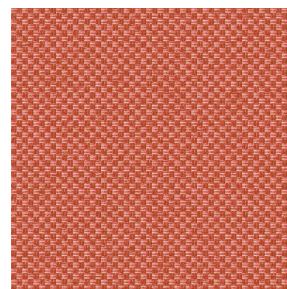
CHARLOTTE Lilas 19



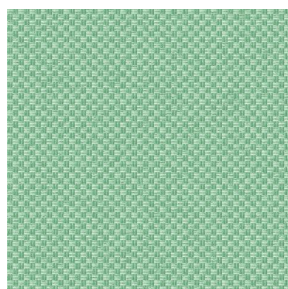
CHARLOTTE Lin 11



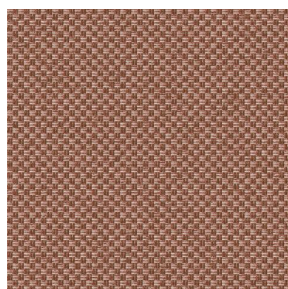
CHARLOTTE Maïs 37



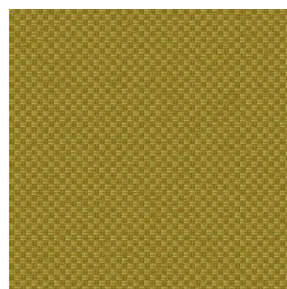
CHARLOTTE Melon 22



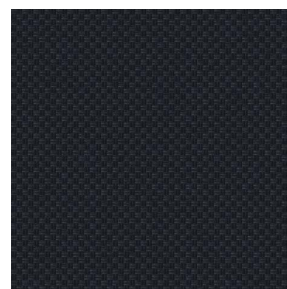
CHARLOTTE Menthe  
122



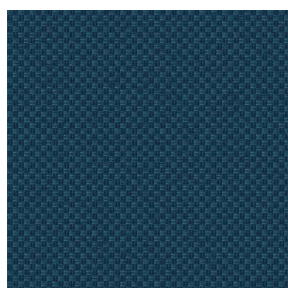
CHARLOTTE Mordore  
133



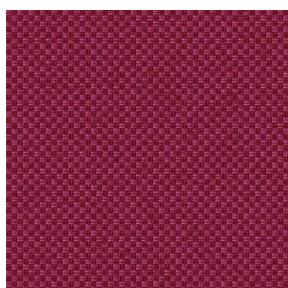
CHARLOTTE Mousse 92



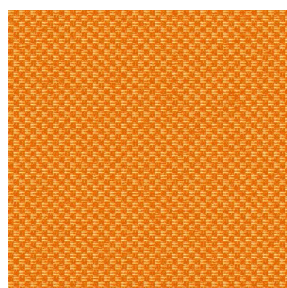
CHARLOTTE Noir 10



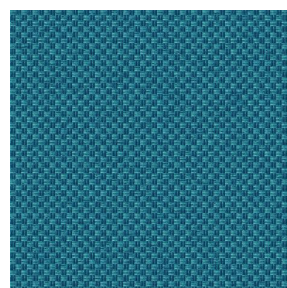
CHARLOTTE Océan 91



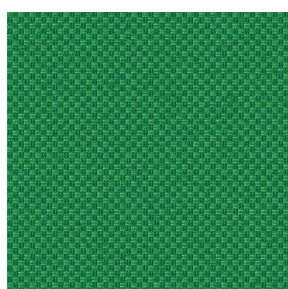
CHARLOTTE Opéra 104



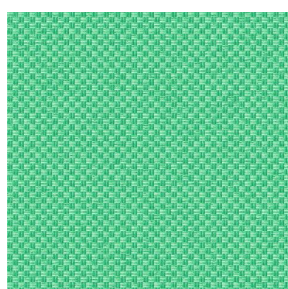
CHARLOTTE Orange 15



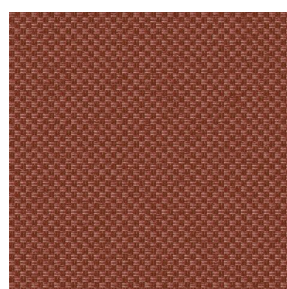
CHARLOTTE Pacifique  
54



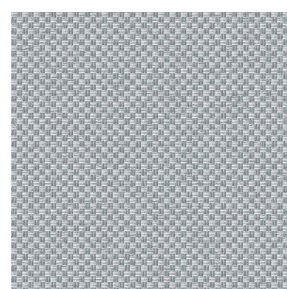
CHARLOTTE Prairie 125



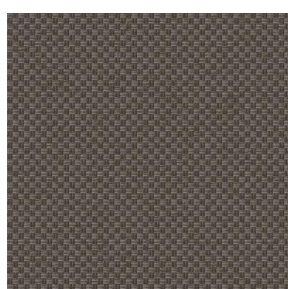
CHARLOTTE Printemps  
130



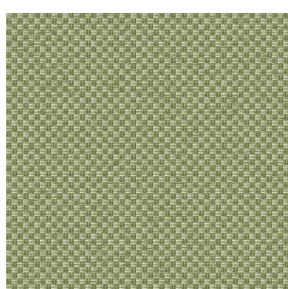
CHARLOTTE Sienne 29



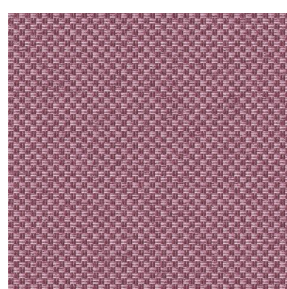
CHARLOTTE Souris 31



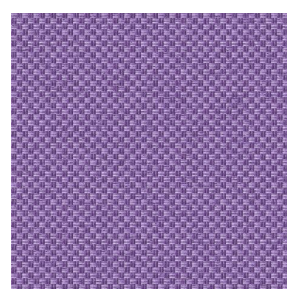
CHARLOTTE Terre 107



CHARLOTTE Tilleul 103



CHARLOTTE Vieux rose  
64



CHARLOTTE Violine 105



(Headquarters) SOTEXPRO - 510 route de Montchal - 42360 PANISSIÈRES - FRANCE - +33 4 77 27 60 60  
(Showroom) Le LAB' SOTEXPRO - 4 rue du Mail - 75002 PARIS - FRANCE

Non-contractual photos and colors - Indicative fitting - Fitting may vary depending on support selected