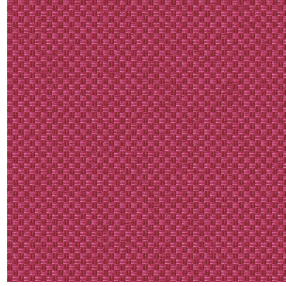




3141 bpi 00
Support d'impression



CHARLOTTE Grenat 56
Motif d'impression



Visuel ne prenant pas en compte le support d'impression, le rendu final pouvant varier en fonction du support choisi.

Support d'impression **3141 bpi 00** Motif d'impression **CHARLOTTE Grenat 56**

Support voile pour impression numérique.

Propriétés techniques



Non feu



Transparent

Applications Store bateau - Parois japonaises - Rideaux

Composition polyester/polyester FR

Poids 50 g/m²

Laize 290 cm

Sens Contre sens

Raccord ↔ 0.0 cm ↓ 0.0 cm

Conseils d'entretien

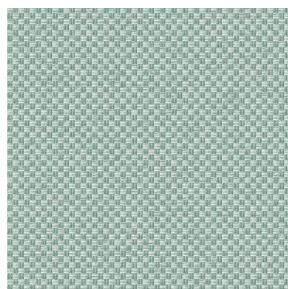
Label France Terre Textile / OEKO-TEX STANDARD 100

Minimum commande 25 mètre(s) linéaire(s)

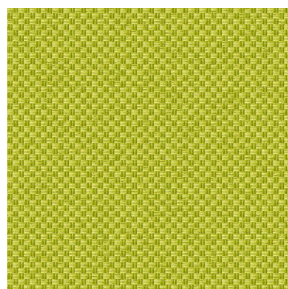
Caractéristiques techniques

| | | | |
|--------------------|-----------------------------------|-----------------|----|
| Non feu | M1 / B1 / IMO PASS | | |
| Indices optiques | Réflexion lumière : | 25 % | |
| | Absorption lumière : | 4 % | |
| | Transmission lumière : | 71 % | |
| Voile transparent | Oui | | |
| Indices thermiques | réflexion solaire : | 25 % | |
| | absorption solaire : | 3 % | |
| | Transmission solaire : | 72 % | |
| | Transmission UV : | 65 % | |
| | Gtot : | Gt 50 % Fc 85 % | |
| Résistance | Solidité lumière (unités Class/8) | 6 | |
| | Stabilité dimensionnelle (%) | Chaîne | -1 |
| | | Trame | 0 |
| | Allongement rupture (mm) | Chaîne | 28 |
| | | Trame | 34 |
| | Résistance rupture (daN) | Chaîne | 30 |
| | | Trame | 36 |

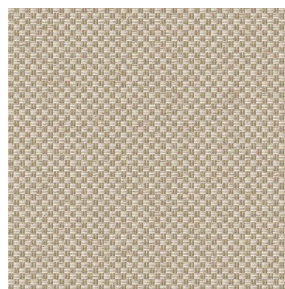
Motif d'impression CHARLOTTE



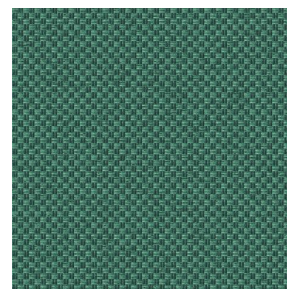
CHARLOTTE Absinthe
132



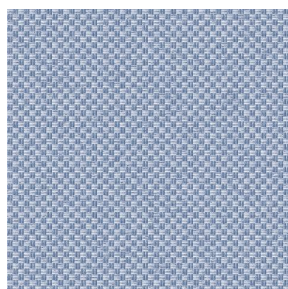
CHARLOTTE Anis 62



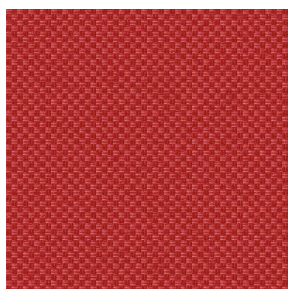
CHARLOTTE Beige 63



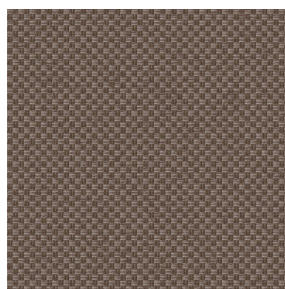
CHARLOTTE Bouteille
101



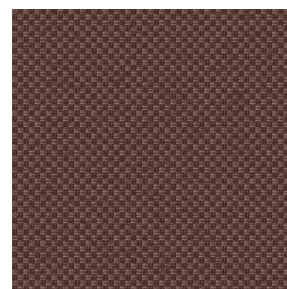
CHARLOTTE Brume 47



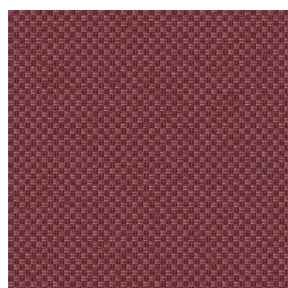
CHARLOTTE Cerise 66



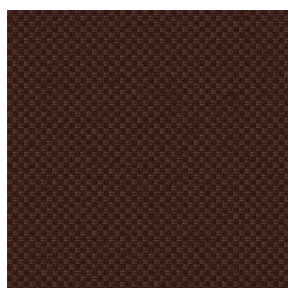
CHARLOTTE Chamois
111



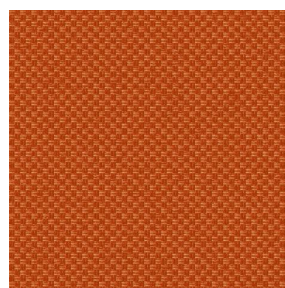
CHARLOTTE Chataigne
55



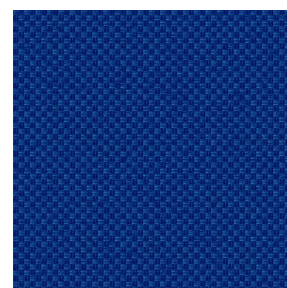
CHARLOTTE Chaudron
118



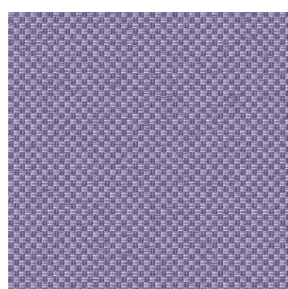
CHARLOTTE Chocolat
70



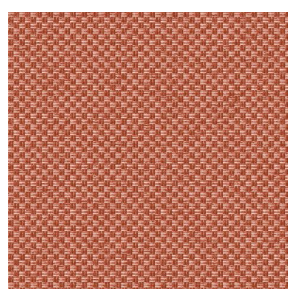
CHARLOTTE Citrouille
136



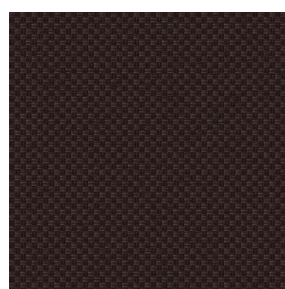
CHARLOTTE Cobalt 114



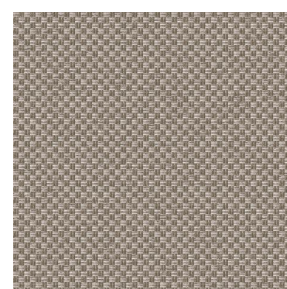
CHARLOTTE Crepuscule
45



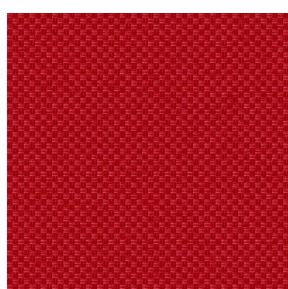
CHARLOTTE Cuivre 50



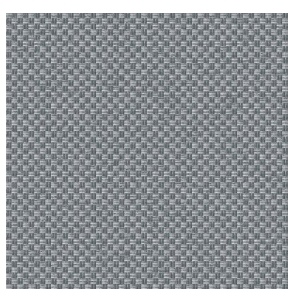
CHARLOTTE Ébene 124



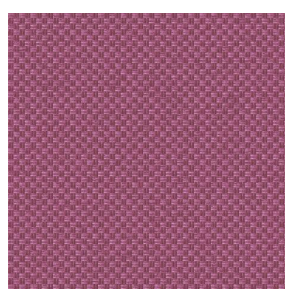
CHARLOTTE Ficelle 09



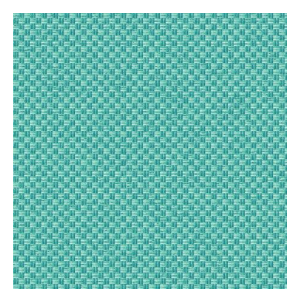
CHARLOTTE Fiesta 131



CHARLOTTE Gris 97



CHARLOTTE Hortensia
134



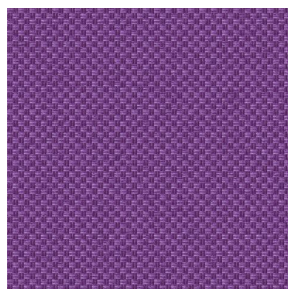
CHARLOTTE Lagon 110



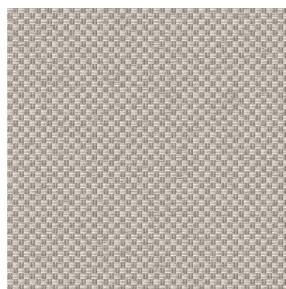
(Headquarters) SOTEXPRO - 510 route de Montchal - 42360 PANISSIÈRES - FRANCE - +33 4 77 27 60 60
(Showroom) Le LAB' SOTEXPRO - 4 rue du Mail - 75002 PARIS - FRANCE

Non-contractual photos and colors - Indicative fitting - Fitting may vary depending on support selected

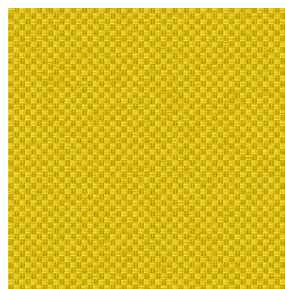
Motif d'impression CHARLOTTE



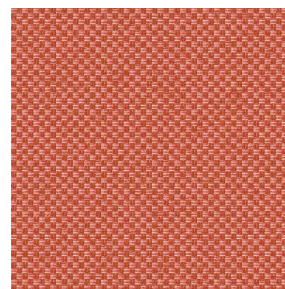
CHARLOTTE Lilas 19



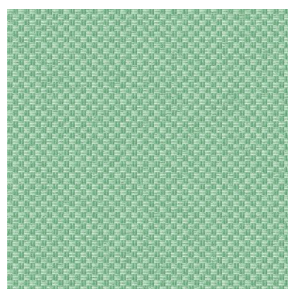
CHARLOTTE Lin 11



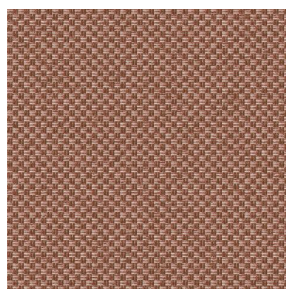
CHARLOTTE Maïs 37



CHARLOTTE Melon 22



CHARLOTTE Menthe
122



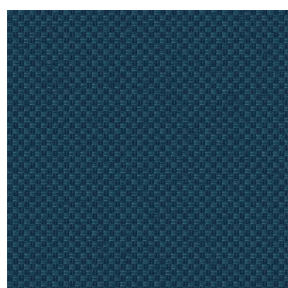
CHARLOTTE Mordore
133



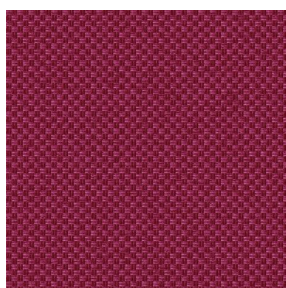
CHARLOTTE Mousse 92



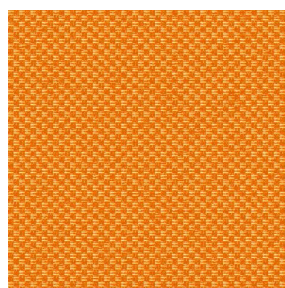
CHARLOTTE Noir 10



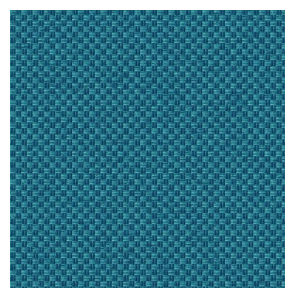
CHARLOTTE Océan 91



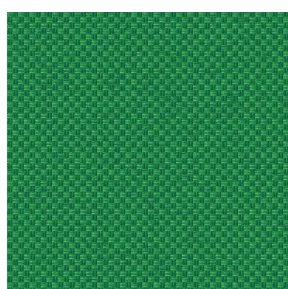
CHARLOTTE Opéra 104



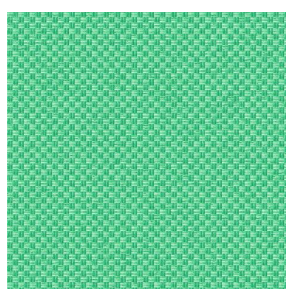
CHARLOTTE Orange 15



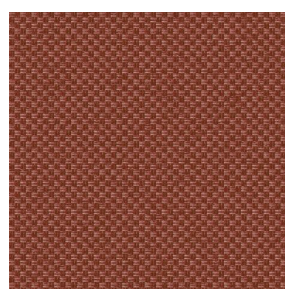
CHARLOTTE Pacifique
54



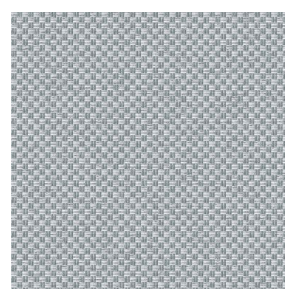
CHARLOTTE Prairie 125



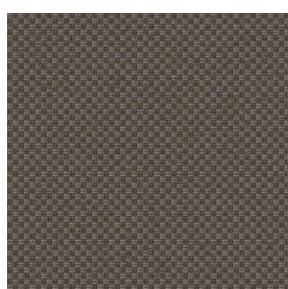
CHARLOTTE Printemps
130



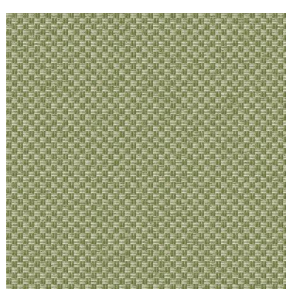
CHARLOTTE Sienne 29



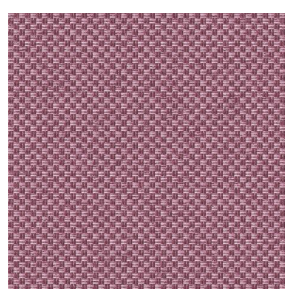
CHARLOTTE Souris 31



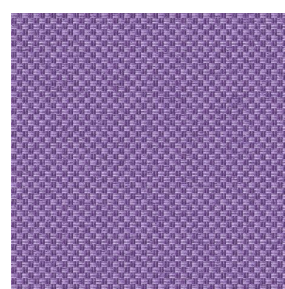
CHARLOTTE Terre 107



CHARLOTTE Tilleul 103



CHARLOTTE Vieux rose
64



CHARLOTTE Violine 105



(Headquarters) SOTEXPRO - 510 route de Montchal - 42360 PANISSIÈRES - FRANCE - +33 4 77 27 60 60
(Showroom) Le LAB' SOTEXPRO - 4 rue du Mail - 75002 PARIS - FRANCE

Non-contractual photos and colors - Indicative fitting - Fitting may vary depending on support selected