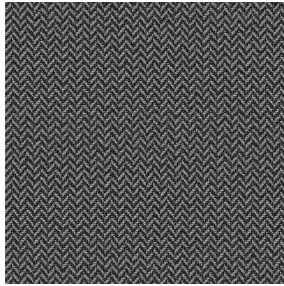


ASTRAL BPI 00
Support d'impression



SCOURTIN Anthracite 38
Motif d'impression

Support d'impression **ASTRAL BPI 00** Motif d'impression **SCOURTIN** **Anthracite 38**

Support d'impression occultant

Propriétés techniques



Non feu



Thermique

Applications Store bateau - Parois japonaises - Rideaux

Composition 100 % polyester/acrylique envers floqué blanc

Poids 280 g/m²

Laize 280 cm

Sens Contre sens ou sens normal

Raccord ↔ cm ↑ cm

Conseils d'entretien     

Label

Minimum commande 25 mètre(s) linéaire(s)

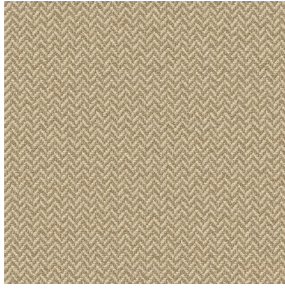


Visuel ne prenant pas en compte le support d'impression, le rendu final pouvant varier en fonction du support choisi.

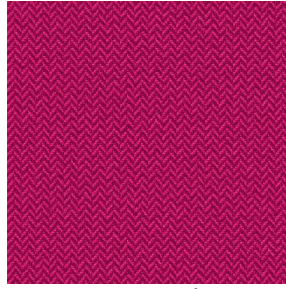
Caractéristiques techniques

Non feu	EN13773 : 2003 Class 1 / BS 5867 TYPE C / B1 / IMO PASS / UNI 8456 / 9174 Classe Uno	
Indices optiques	Réflexion lumière :	82 %
	Absorption lumière :	18 %
	Transmission lumière :	0 %
Indices thermiques	réflexion solaire :	74 %
	absorption solaire :	26 %
	Transmission solaire :	0 %
	Transmission UV :	0 %
	Gtot :	Gt 33 % Fc 55 %
Résistance	Solidité lumière (unités Class/8)	5
	Stabilité dimensionnelle (%)	
	Chaîne	-0,5
	Trame	0
	Allongement rupture (mm)	
	Chaîne	26
	Trame	15
	Résistance rupture (daN)	
	Chaîne	62
	Trame	31

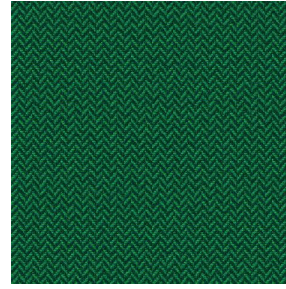
Motif d'impression SCOURTIN



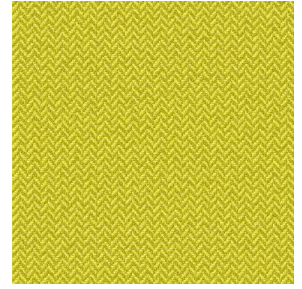
SCOURTIN Beige 63



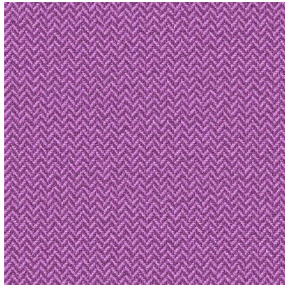
SCOURTIN Fuchsia 33



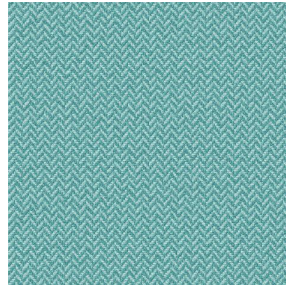
SCOURTIN Sapin 126



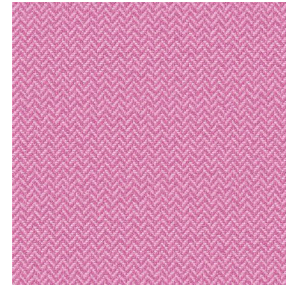
SCOURTIN Bergamote
121



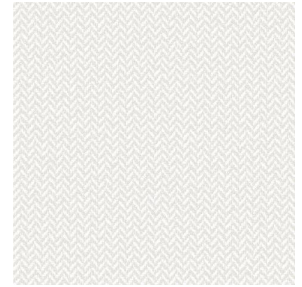
SCOURTIN Violine 105



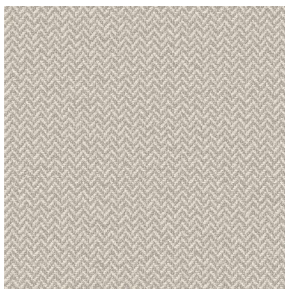
SCOURTIN Pacifique 54



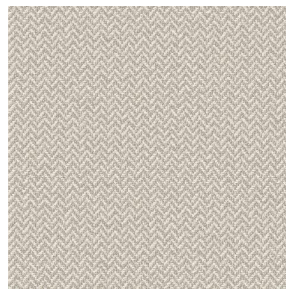
SCOURTIN Rose 129



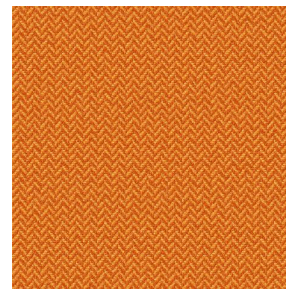
SCOURTIN Blanc 01



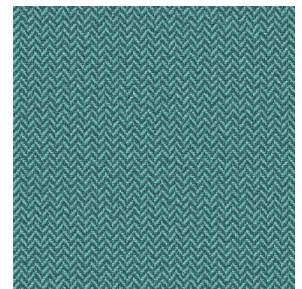
SCOURTIN Lin 11



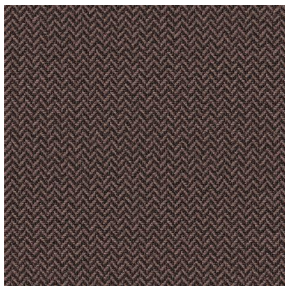
SCOURTIN Naturel 26



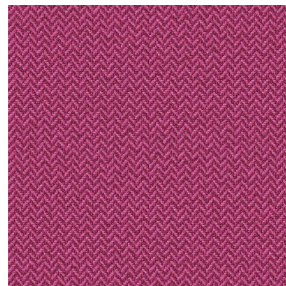
SCOURTIN Citrouille
136



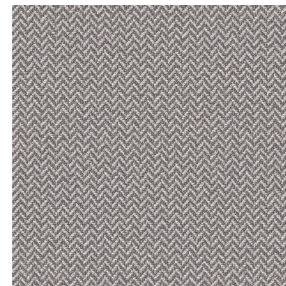
SCOURTIN Turquoise 53



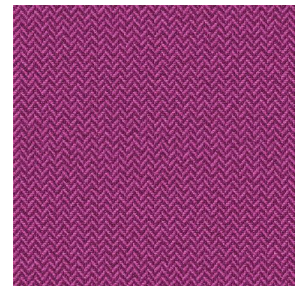
SCOURTIN Brun 23



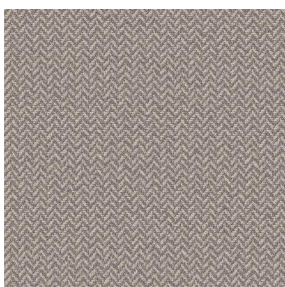
SCOURTIN Hortensia
134



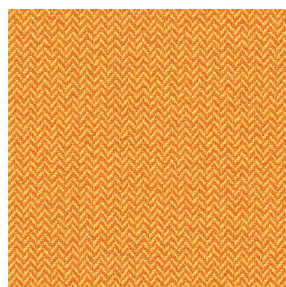
SCOURTIN Orage 123



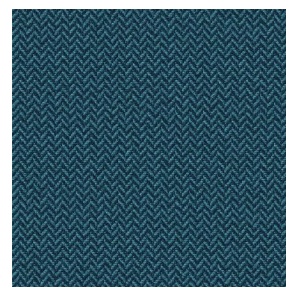
SCOURTIN Rubis 59



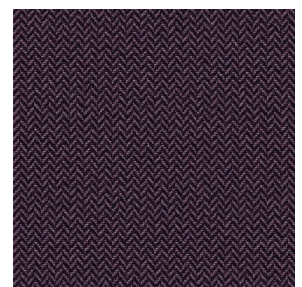
SCOURTIN Ficelle 09



SCOURTIN Maïs 37



SCOURTIN Céladon 135



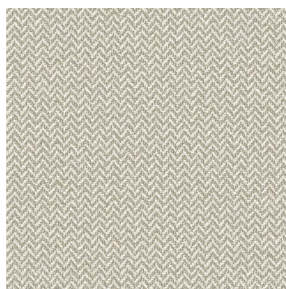
SCOURTIN Ebene 113



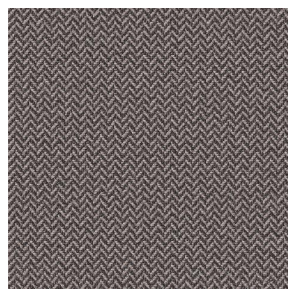
(Headquarters) SOTEXPRO - 510 route de Montchal - 42360 PANISSIÈRES - FRANCE - +33 4 77 27 60 60
(Showroom) Le LAB' SOTEXPRO - 4 rue du Mail - 75002 PARIS - FRANCE

Non-contractual photos and colors - Indicative fitting - Fitting may vary depending on support selected

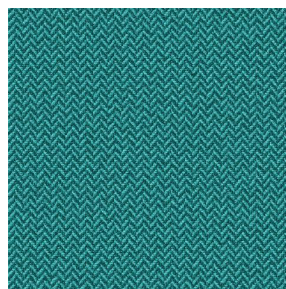
Motif d'impression SCOURTIN



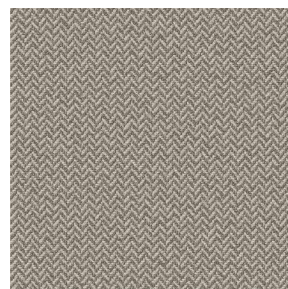
SCOURTIN Tourterelle
138



SCOURTIN Titanium 98



SCOURTIN Lagon 110



SCOURTIN Gris 97



(Headquarters) SOTEXPRO - 510 route de Montchal - 42360 PANISSIÈRES - FRANCE - +33 4 77 27 60 60
(Showroom) Le LAB' SOTEXPRO - 4 rue du Mail - 75002 PARIS - FRANCE

Non-contractual photos and colors - Indicative fitting - Fitting may vary depending on support selected