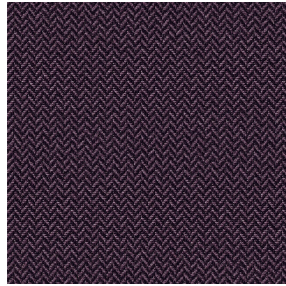




ASTRAL BPI 00
Support d'impression



SCOURTIN Ebene 113
Motif d'impression



Visuel ne prenant pas en compte le support d'impression, le rendu final pouvant varier en fonction du support choisi.

Support d'impression **ASTRAL BPI 00** Motif d'impression **SCOURTIN Ebene 113** **113**

Support d'impression occultant

Propriétés techniques



Non feu



Thermique

Applications Store bateau - Parois japonaises - Rideaux

Composition 100 % polyester/acrylique envers floqué blanc

Poids 280 g/m²

Laize 280 cm

Sens Contre sens ou sens normal

Raccord ↔ cm ↑ cm

Conseils d'entretien     

Label

Minimum commande 25 mètre(s) linéaire(s)

Caractéristiques techniques

Non feu

EN13773 : 2003 Class 1 / BS 5867 TYPE C / B1 / IMO PASS / UNI 8456 / 9174 Classe Uno

Indices optiques

Réflexion lumière : **82 %**

Absorption lumière : **18 %**

Transmission lumière : **0 %**

Indices thermiques

réflexion solaire : **74 %**

absorption solaire : **26 %**

Transmission solaire : **0 %**

Transmission UV : **0 %**

Gtot : **Gt 33 % Fc 55 %**

Résistance

Solidité lumière (unités Class/8) **5**

Stabilité dimensionnelle (%)

Chaîne **-0,5**

Trame **0**

Allongement rupture (mm)

Chaîne **26**

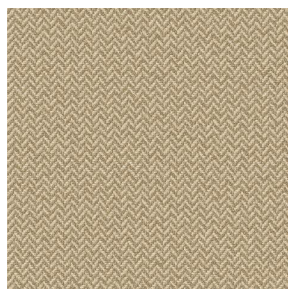
Trame **15**

Résistance rupture (daN)

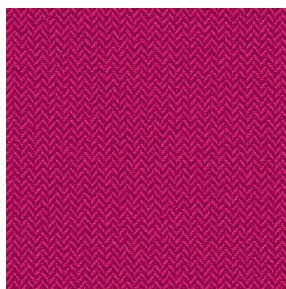
Chaîne **62**

Trame **31**

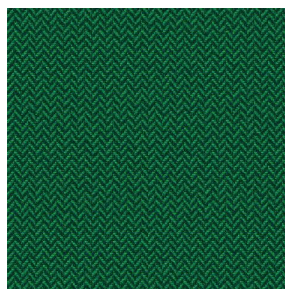
Motif d'impression SCOURTIN



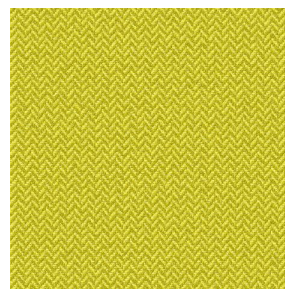
SCOURTIN Beige 63



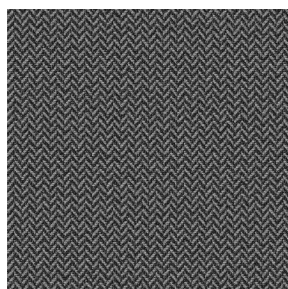
SCOURTIN Fuchsia 33



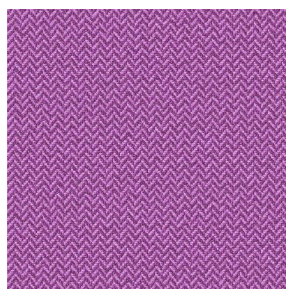
SCOURTIN Sapin 126



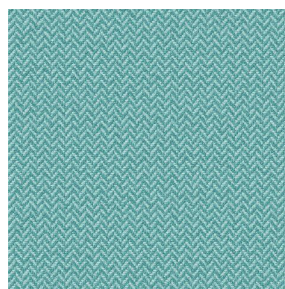
SCOURTIN Bergamote
121



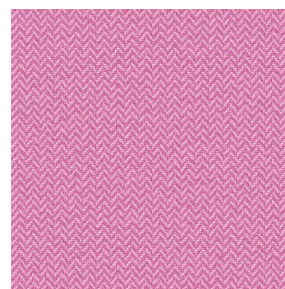
SCOURTIN Anthracite
38



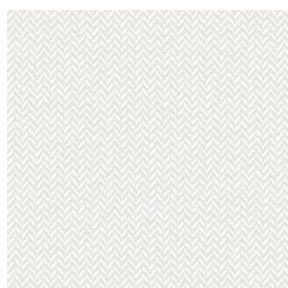
SCOURTIN Violine 105



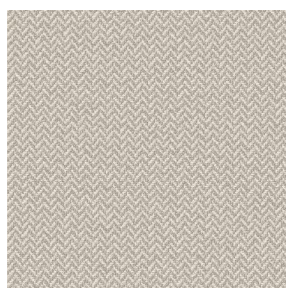
SCOURTIN Pacifique 54



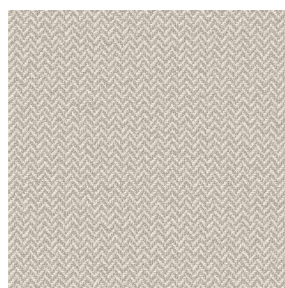
SCOURTIN Rose 129



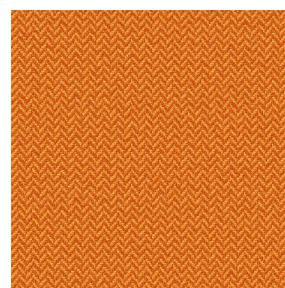
SCOURTIN Blanc 01



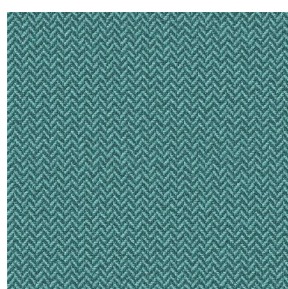
SCOURTIN Lin 11



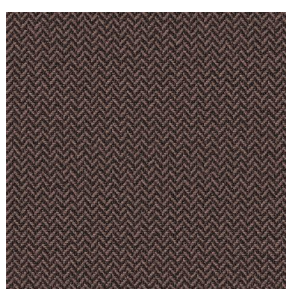
SCOURTIN Naturel 26



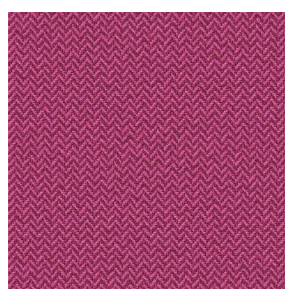
SCOURTIN Citrouille
136



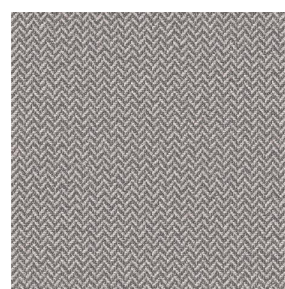
SCOURTIN Turquoise 53



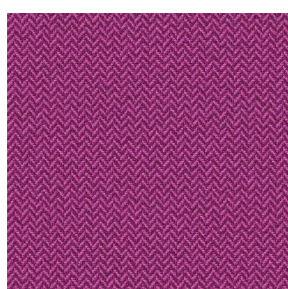
SCOURTIN Brun 23



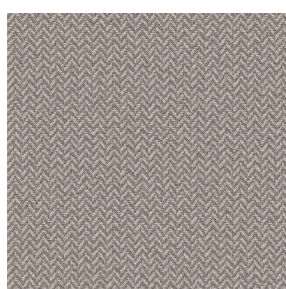
SCOURTIN Hortensia
134



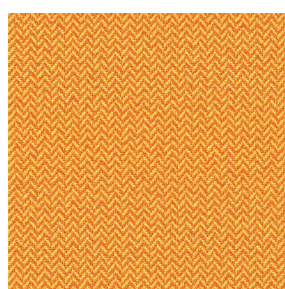
SCOURTIN Orage 123



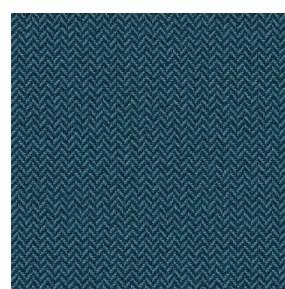
SCOURTIN Rubis 59



SCOURTIN Ficelle 09



SCOURTIN Maïs 37



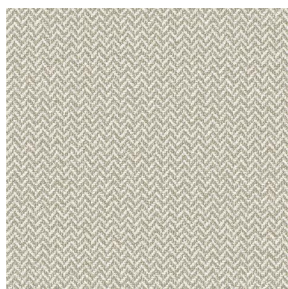
SCOURTIN Céladon 135



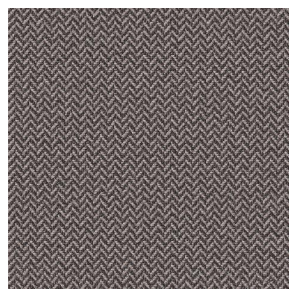
(Headquarters) SOTEXPRO - 510 route de Montchal - 42360 PANISSIÈRES - FRANCE - +33 4 77 27 60 60
(Showroom) Le LAB' SOTEXPRO - 4 rue du Mail - 75002 PARIS - FRANCE

Non-contractual photos and colors - Indicative fitting - Fitting may vary depending on support selected

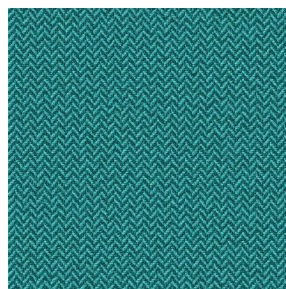
Motif d'impression SCOURTIN



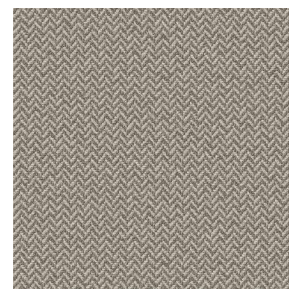
SCOURTIN Tourterelle
138



SCOURTIN Titanium 98



SCOURTIN Lagon 110



SCOURTIN Gris 97



(Headquarters) SOTEXPRO - 510 route de Montchal - 42360 PANISSIÈRES - FRANCE - +33 4 77 27 60 60
(Showroom) Le LAB' SOTEXPRO - 4 rue du Mail - 75002 PARIS - FRANCE

Non-contractual photos and colors - Indicative fitting - Fitting may vary depending on support selected