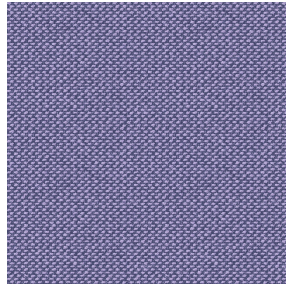


ASTRAL BPI 00
Support d'impression



METIS Parme 79
Motif d'impression



Support d'impression **ASTRAL BPI 00** Motif d'impression **METIS Parme 79**

Support d'impression occultant

Propriétés techniques



Non feu



Thermique

Applications Store bateau - Parois japonaises - Rideaux

Composition 100 % polyester/acrylique envers floqué blanc

Poids 280 g/m²

Laize 280 cm

Sens Contre sens ou sens normal

Raccord ↔ 0.0 cm ↓ 0.0 cm

Conseils d'entretien

Label

Minimum commande 25 mètre(s) linéaire(s)



Visuel ne prenant pas en compte le support d'impression, le rendu final pouvant varier en fonction du support choisi.

Caractéristiques techniques

Non feu

EN13773 : 2003 Class 1 / BS 5867 TYPE C / B1 / IMO PASS / UNI 8456 / 9174 Classe Uno

Indices optiques

Réflexion lumière : **82 %**

Absorption lumière : **18 %**

Transmission lumière : **0 %**

Indices thermiques

réflexion solaire : **74 %**

absorption solaire : **26 %**

Transmission solaire : **0 %**

Transmission UV : **0 %**

Gtot : **Gt 33 % Fc 55 %**

Résistance

Solidité lumière (unités Class/8) **5**

Stabilité dimensionnelle (%)

Chaîne **-0,5**

Trame **0**

Allongement rupture (mm)

Chaîne **26**

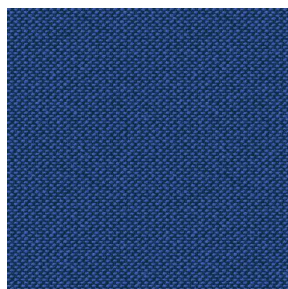
Trame **15**

Résistance rupture (daN)

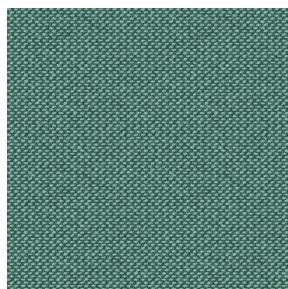
Chaîne **62**

Trame **31**

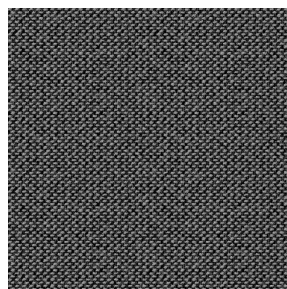
Motif d'impression METIS



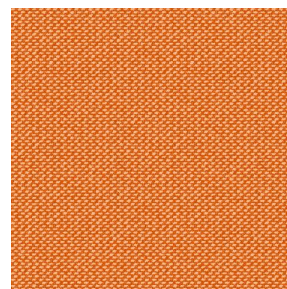
METIS Gentiane 16



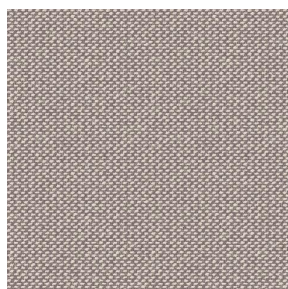
METIS Absinthe 132



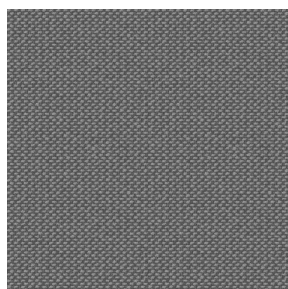
METIS Noir 10



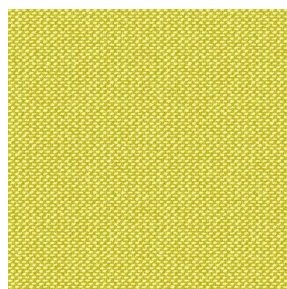
METIS Citrouille 136



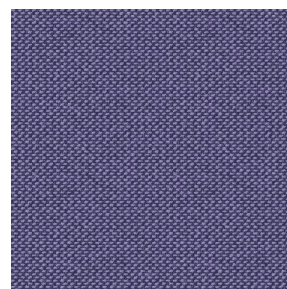
METIS Chanvre 72



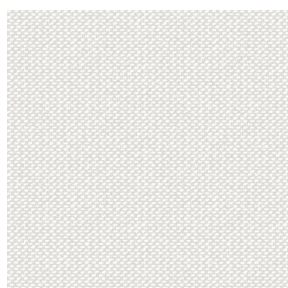
METIS Gris 97



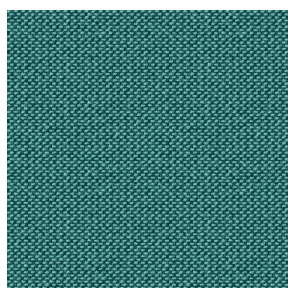
METIS Bergamote 121



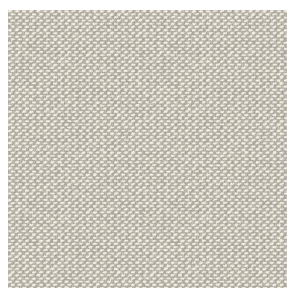
METIS Violine 105



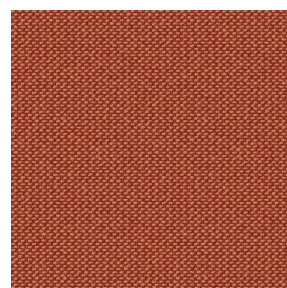
METIS Perle 96



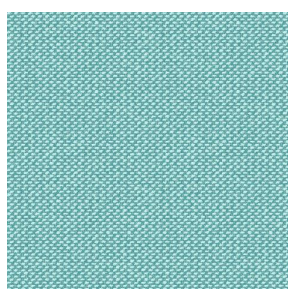
METIS Céladon 135



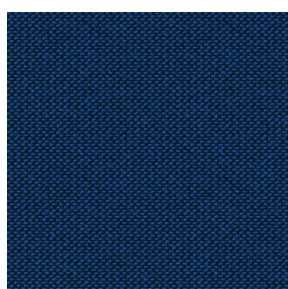
METIS Lin 11



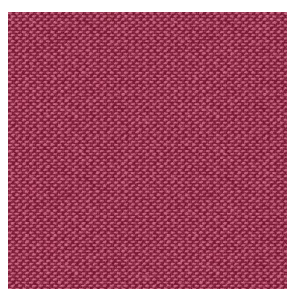
METIS Sienne 29



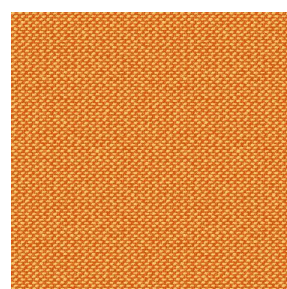
METIS Lagon 110



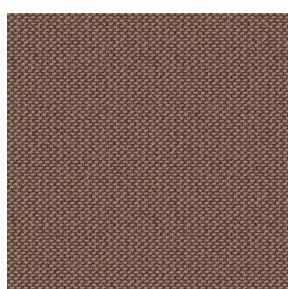
METIS Cobalt 114



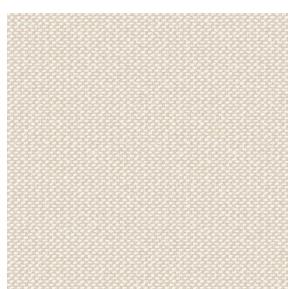
METIS Framboise 81



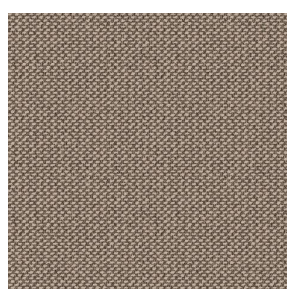
METIS Abricot 08



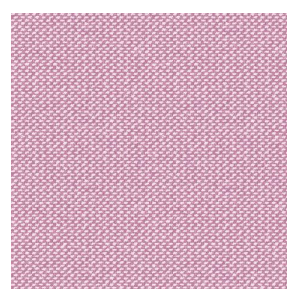
METIS Chamois 111



METIS Ivoire 115



METIS Ficelle 09



METIS Rose 129



(Headquarters) SOTEXPRO - 510 route de Montchal - 42360 PANISSIÈRES - FRANCE - +33 4 77 27 60 60
(Showroom) Le LAB' SOTEXPRO - 4 rue du Mail - 75002 PARIS - FRANCE

Non-contractual photos and colors - Indicative fitting - Fitting may vary depending on support selected

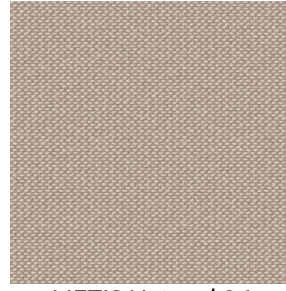
Motif d'impression METIS



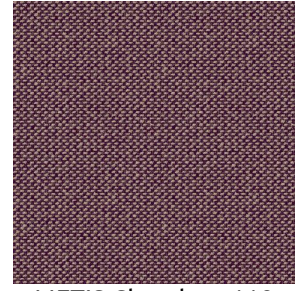
METIS Cactus 36



METIS Hortensia 134



METIS Naturel 26



METIS Chaudron 118



(Headquarters) SOTEXPRO - 510 route de Montchal - 42360 PANISSIÈRES - FRANCE - +33 4 77 27 60 60
(Showroom) Le LAB' SOTEXPRO - 4 rue du Mail - 75002 PARIS - FRANCE

Non-contractual photos and colors - Indicative fitting - Fitting may vary depending on support selected