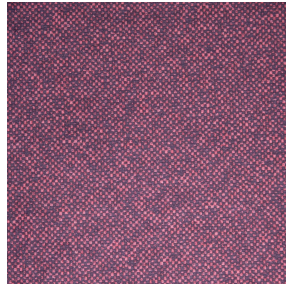
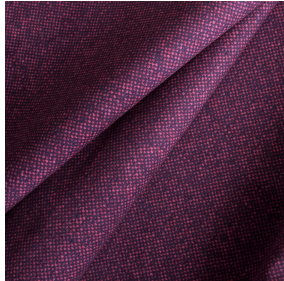




**BELORA BPI 00**  
Support d'impression



**ANATOLE Amarante 108**  
Motif d'impression



Visuel ne prenant pas en compte le support d'impression, le rendu final pouvant varier en fonction du support choisi.

## Support d'impression **BELORA BPI 00** Motif d'impression **ANATOLE** **Amarante 108**

Support obscurcissant pour impression numérique. Il ne dispose pas du classement au feu M1.

### Propriétés techniques



Non feu



Thermique



Acoustique

**Applications** Store bateau - Parois japonaises - Doublure - Rideaux

**Composition** 100% polyester

**Poids** 260 g/m<sup>2</sup>

**Laize** 280 cm

**Sens** Contre sens

**Raccord** ↔ cm ↓ cm

**Conseils d'entretien**     

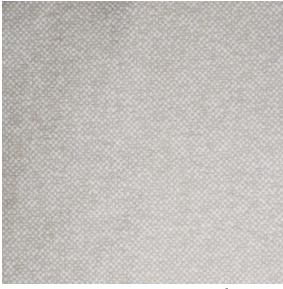
**Label** OEKO-TEX STANDARD 100

**Minimum commande** 25 mètre(s) linéaire(s)

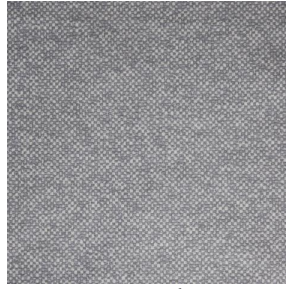
## Caractéristiques techniques

|            |  |             |
|------------|--|-------------|
| Non feu    | NF 12952                                 |             |
| Acoustique | Coeff. moyen de réduction sonore (NRC) : | <b>0.88</b> |
| Résistance | Stabilité dimensionnelle (%)             |             |
|            | Chaîne                                   | <b>0</b>    |
|            | Trame                                    | <b>0</b>    |
|            | Allongement rupture (mm)                 |             |
|            | Chaîne                                   | <b>17</b>   |
|            | Trame                                    | <b>27</b>   |
|            | Résistance rupture (daN)                 |             |
|            | Chaîne                                   | <b>87</b>   |
| Trame      | <b>110</b>                               |             |

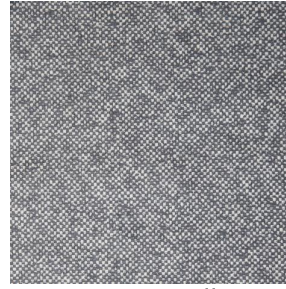
## Motif d'impression ANATOLE



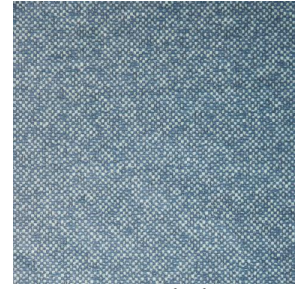
ANATOLE Naturel 26



ANATOLE lin 11



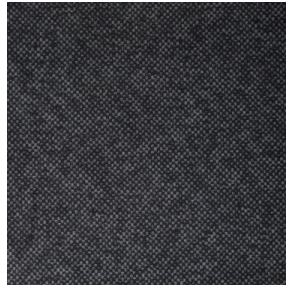
ANATOLE Ficelle 09



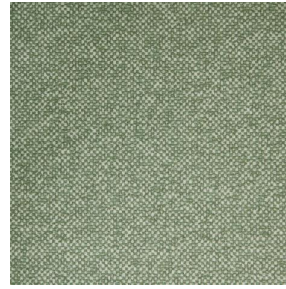
ANATOLE Celadon 135



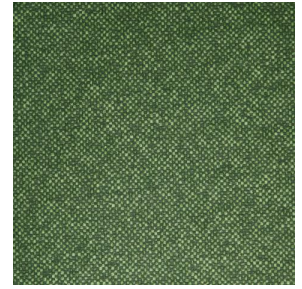
ANATOLE Océan 91



ANATOLE Titanium 98



ANATOLE Cactus 36



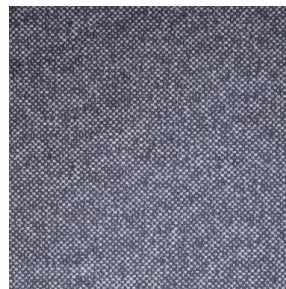
ANATOLE mousse 92



ANATOLE Or 94



ANATOLE Chaudron  
118



ANATOLE Taupe 95



(Headquarters) SOTEXPRO - 510 route de Montchal - 42360 PANISSIÈRES - FRANCE - +33 4 77 27 60 60  
(Showroom) Le LAB' SOTEXPRO - 4 rue du Mail - 75002 PARIS - FRANCE

Non-contractual photos and colors - Indicative fitting - Fitting may vary depending on support selected