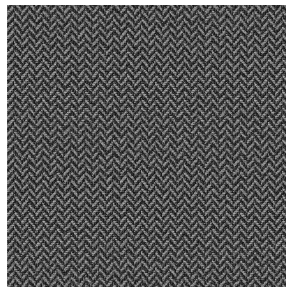
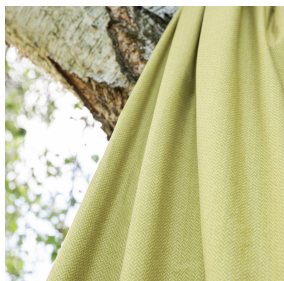




**BELORA BPI 00**  
Support d'impression



**SCOURTIN Anthracite 38**  
Motif d'impression



Visuel ne prenant pas en compte le support d'impression, le rendu final pouvant varier en fonction du support choisi.

## Support d'impression **BELORA BPI 00** Motif d'impression **SCOURTIN** **Anthracite 38**

Support obscurcissant pour impression numérique. Il ne dispose pas du classement au feu M1.

### Propriétés techniques



Non feu



Thermique



Acoustique

**Applications** Store bateau - Parois japonaises - Doublure - Rideaux

**Composition** 100% polyester

**Poids** 260 g/m<sup>2</sup>

**Laize** 280 cm

**Sens** Contre sens

**Raccord** ↔ cm ↑ cm

**Conseils d'entretien**

**Label** OEKO-TEX STANDARD 100

**Minimum commande** 25 mètre(s) linéaire(s)

## Caractéristiques techniques

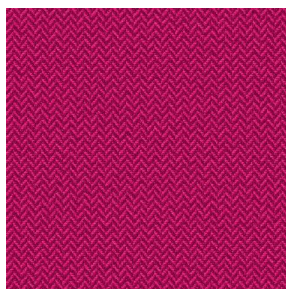
Non feu	NF 12952	
Acoustique	Coeff. moyen de réduction sonore (NRC) :	<b>0.88</b>
Résistance	Stabilité dimensionnelle (%)	
	Chaîne	<b>0</b>
	Trame	<b>0</b>
	Allongement rupture (mm)	
	Chaîne	<b>17</b>
	Trame	<b>27</b>
Résistance rupture (daN)	Chaîne	<b>87</b>
	Trame	<b>110</b>



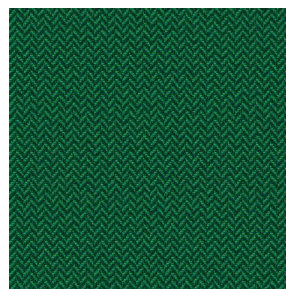
# Motif d'impression SCOURTIN



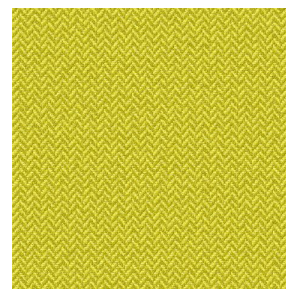
SCOURTIN Beige 63



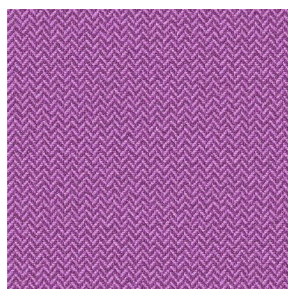
SCOURTIN Fuchsia 33



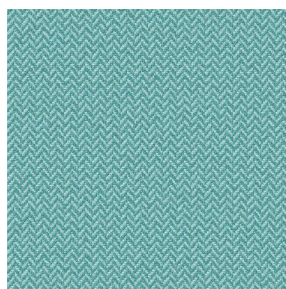
SCOURTIN Sapin 126



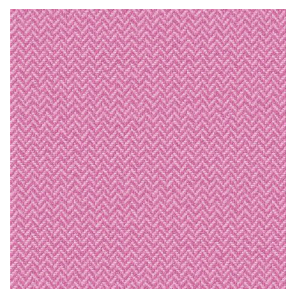
SCOURTIN Bergamote  
121



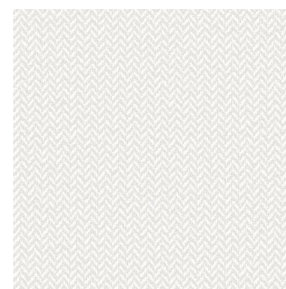
SCOURTIN Violine 105



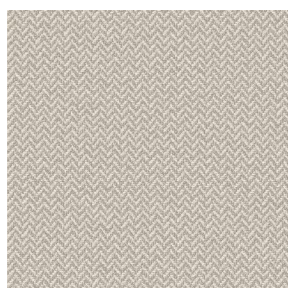
SCOURTIN Pacifique 54



SCOURTIN Rose 129



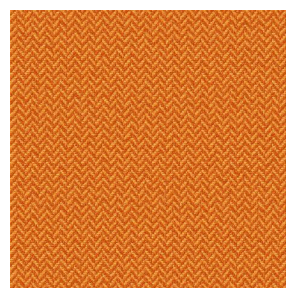
SCOURTIN Blanc 01



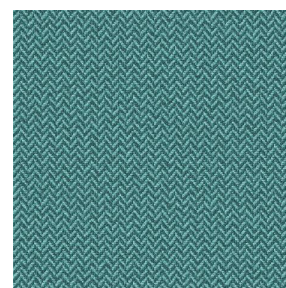
SCOURTIN Lin 11



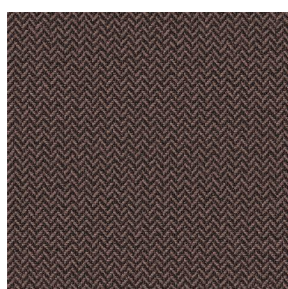
SCOURTIN Naturel 26



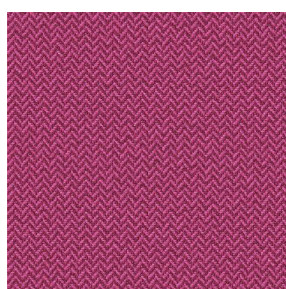
SCOURTIN Citrouille  
136



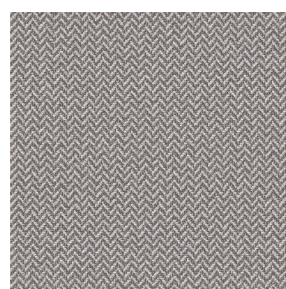
SCOURTIN Turquoise 53



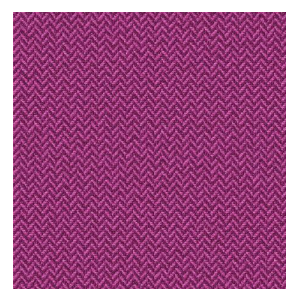
SCOURTIN Brun 23



SCOURTIN Hortensia  
134



SCOURTIN Orage 123



SCOURTIN Rubis 59



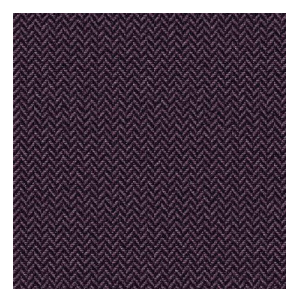
SCOURTIN Ficelle 09



SCOURTIN Maïs 37



SCOURTIN Céladon 135



SCOURTIN Ebene 113



(Headquarters) SOTEXPRO - 510 route de Montchal - 42360 PANISSIÈRES - FRANCE - +33 4 77 27 60 60  
(Showroom) Le LAB' SOTEXPRO - 4 rue du Mail - 75002 PARIS - FRANCE

Non-contractual photos and colors - Indicative fitting - Fitting may vary depending on support selected



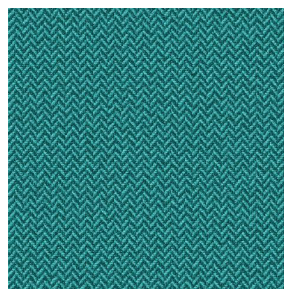
## Motif d'impression SCOURTIN



SCOURTIN Tourterelle  
138



SCOURTIN Titanium 98



SCOURTIN Lagon 110



SCOURTIN Gris 97



(Headquarters) SOTEXPRO - 510 route de Montchal - 42360 PANISSIÈRES - FRANCE - +33 4 77 27 60 60  
(Showroom) Le LAB' SOTEXPRO - 4 rue du Mail - 75002 PARIS - FRANCE

Non-contractual photos and colors - Indicative fitting - Fitting may vary depending on support selected