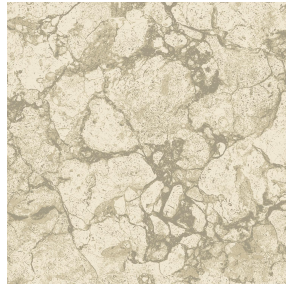




**BOREAL BPI 00**  
Support d'impression



**CARRARA Ficelle 09**  
Motif d'impression



Visuel ne prenant pas en compte le support d'impression, le rendu final pouvant varier en fonction du support choisi.

## Support d'impression **BOREAL BPI 00** Motif d'impression **CARRARA Ficelle 09**

Support obscurcissant pour impression numérique.

### Propriétés techniques



Non feu



Thermique



Acoustique

**Applications** Store bateau - Cache sommier - Doublure - Chemins de lit - Rideaux

**Composition** 100% polyester FR

**Poids** 260 g/m<sup>2</sup>

**Laize** 145 cm

**Sens** Sens normal

**Raccord** ↔ 0.0 cm ↓ 0.0 cm

**Conseils d'entretien**      

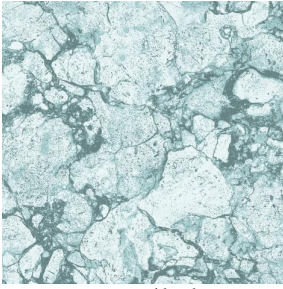
**Label** OEKO-TEX STANDARD 100

**Minimum commande** 25 mètre(s) linéaire(s)

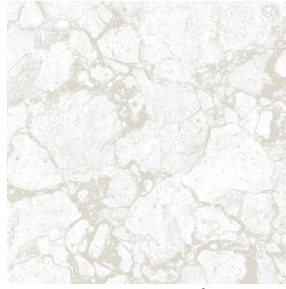
## Caractéristiques techniques

Non feu	M1 / B1 / IMO PASS / UNI 8456 / 9174 Classe Uno	
Acoustique	Coeff. moyen de réduction sonore (NRC) : <b>0.88</b>	
Résistance	Stabilité dimensionnelle (%)	
	Chaîne	<b>0</b>
	Trame	<b>0</b>
	Allongement rupture (mm)	
	Chaîne	<b>17</b>
	Trame	<b>27</b>
	Résistance rupture (daN)	
	Chaîne	<b>87</b>
Trame	<b>110</b>	

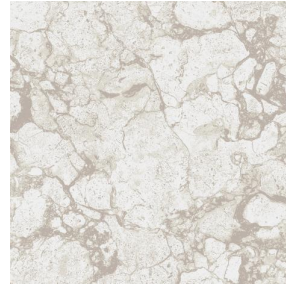
## Motif d'impression CARRARA



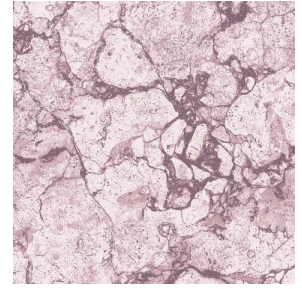
CARRARA Céladon 135



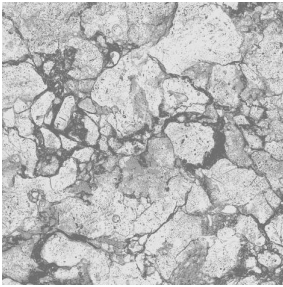
CARRARA Perle 96



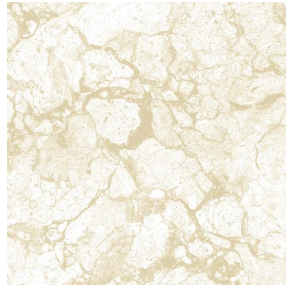
CARRARA Lin 11



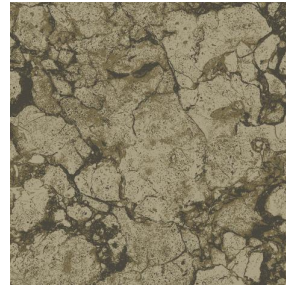
CARRARA Vieux rose 64



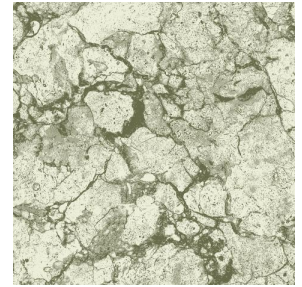
CARRARA Gris 97



CARRARA Naturel 26



CARRARA Chamois 111



CARRARA Absinthe 132



(Headquarters) SOTEXPRO - 510 route de Montchal - 42360 PANISSIÈRES - FRANCE - +33 4 77 27 60 60  
(Showroom) Le LAB' SOTEXPRO - 4 rue du Mail - 75002 PARIS - FRANCE

Non-contractual photos and colors - Indicative fitting - Fitting may vary depending on support selected