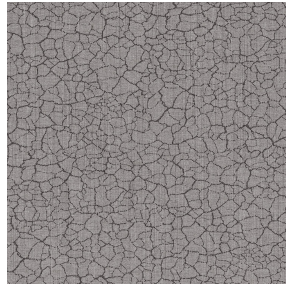




**BOREAL BPI 00**  
Support d'impression



**TERRA Taupe 95**  
Motif d'impression



## Support d'impression **BOREAL BPI 00** Motif d'impression **TERRA Taupe 95**

Support obscurcissant pour impression numérique.

### Propriétés techniques



Non feu



Thermique



Acoustique

**Applications** Store bateau - Cache sommier - Doublure - Chemins de lit - Rideaux

**Composition** 100% polyester FR

**Poids** 260 g/m<sup>2</sup>

**Laize** 145 cm

**Sens** Sens normal

**Raccord** ↔ 0.0 cm ↓ 0.0 cm

**Conseils d'entretien**

**Label** OEKO-TEX STANDARD 100

**Minimum commande** 25 mètre(s) linéaire(s)



Visuel ne prenant pas en compte le support d'impression, le rendu final pouvant varier en fonction du support choisi.

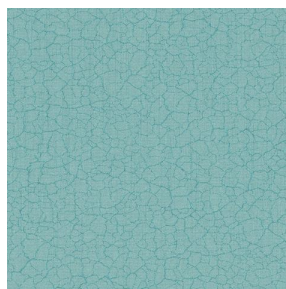
## Caractéristiques techniques

|            |  |           |
|------------|--|-----------|
| Non feu    | M1 / B1 / IMO PASS / UNI 8456 / 9174 Classe Uno      |           |
| Acoustique | Coeff. moyen de réduction sonore (NRC) : <b>0.88</b> |           |
| Résistance | Stabilité dimensionnelle (%)                         |           |
|            | Chaîne   | <b>0</b>  |
|            | Trame  | <b>0</b>  |
|            | Allongement rupture (mm)                             |           |
|            | Chaîne   | <b>17</b> |
|            | Trame  | <b>27</b> |
|            | Résistance rupture (daN)                             |           |
|            | Chaîne   | <b>87</b> |
| Trame      | <b>110</b>   |           |

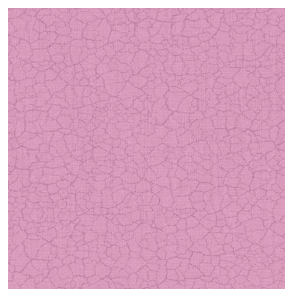
# Motif d'impression TERRA



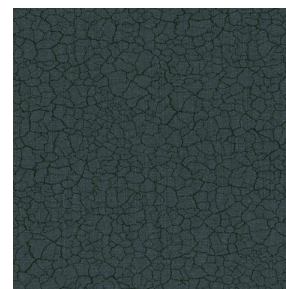
TERRA Ficelle 09



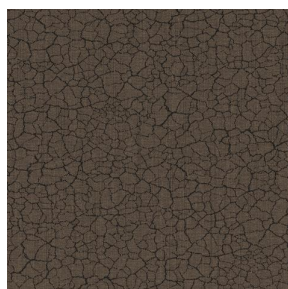
TERRA Ecume 82



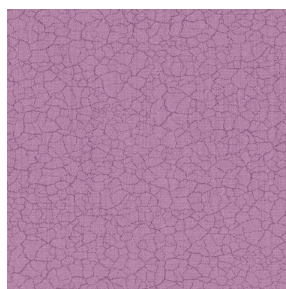
TERRA Rose 129



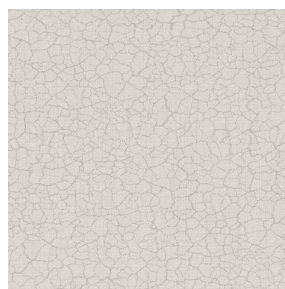
TERRA Fusain 71



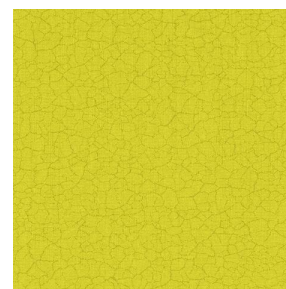
TERRA Brun 23



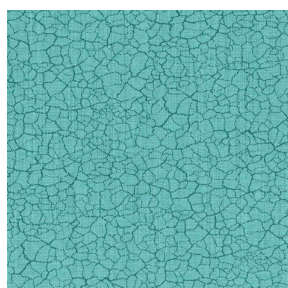
TERRA Hortensia 134



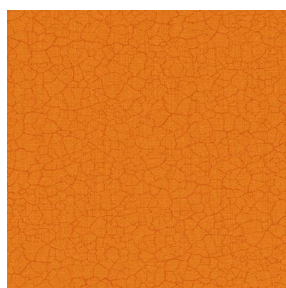
TERRA Naturel 26



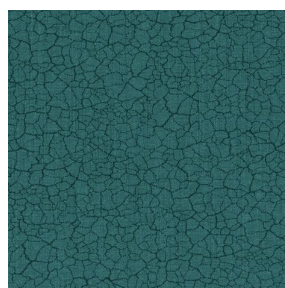
TERRA Anis 62



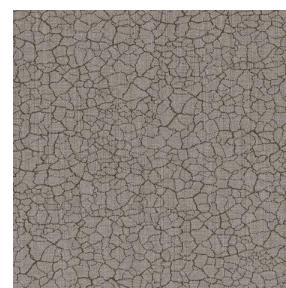
TERRA Lagon 110



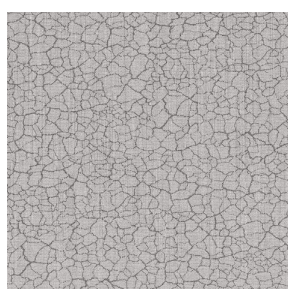
TERRA Citrouille 136



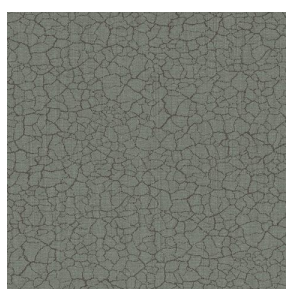
TERRA Pacifique 54



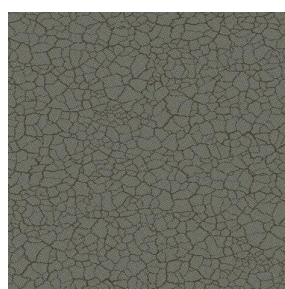
TERRA Chamois 111



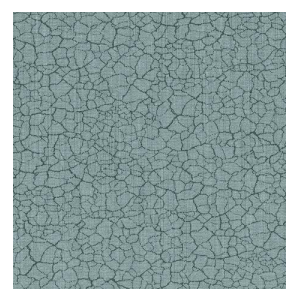
TERRA Titanium 98



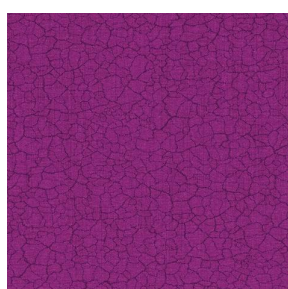
TERRA Graphite 77



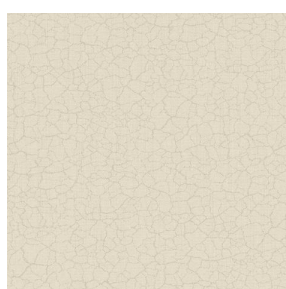
TERRA Gris 97



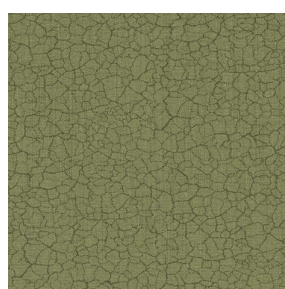
TERRA Ardoise 87



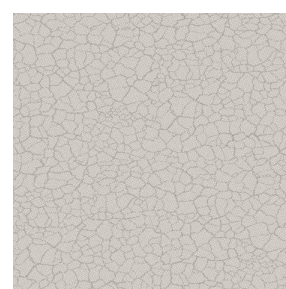
TERRA Violine 105



TERRA Chanvre 72



TERRA Argile 85



TERRA Lin 11



(Headquarters) SOTEXPRO - 510 route de Montchal - 42360 PANISSIÈRES - FRANCE - +33 4 77 27 60 60  
(Showroom) Le LAB' SOTEXPRO - 4 rue du Mail - 75002 PARIS - FRANCE

Non-contractual photos and colors - Indicative fitting - Fitting may vary depending on support selected

## Motif d'impression TERRA



TERRA Genêt 06



TERRA Céladon 135



TERRA Ebène 113



TERRA Ocre 03



(Headquarters) SOTEXPRO - 510 route de Montchal - 42360 PANISSIÈRES - FRANCE - +33 4 77 27 60 60  
(Showroom) Le LAB' SOTEXPRO - 4 rue du Mail - 75002 PARIS - FRANCE

Non-contractual photos and colors - Indicative fitting - Fitting may vary depending on support selected