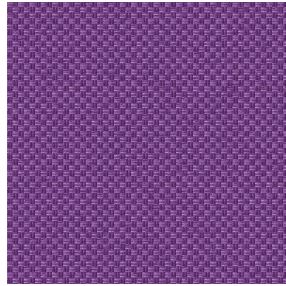


BORNEO BPI 00
Support d'impression



CHARLOTTE Lilas 19
Motif d'impression



Support d'impression **BORNEO BPI 00** Motif d'impression **CHARLOTTE Lilas 19**

Propriétés techniques



Non feu



Thermique



Acoustique

Applications Store bateau - Rideaux

Composition 100 % polyester FR

Poids 440 g/m²

Laize 280 cm

Sens Contre sens ou sens normal

Raccord ↔ 0,0 cm ↓ 0,0 cm

Conseils d'entretien    

Label OEKO-TEX STANDARD 100

Minimum commande 25 mètre(s) linéaire(s)

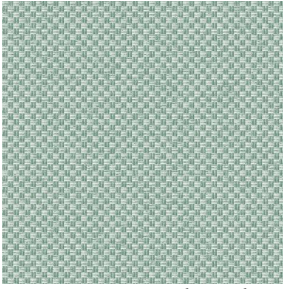


Visuel ne prenant pas en compte le support d'impression, le rendu final pouvant varier en fonction du support choisi.

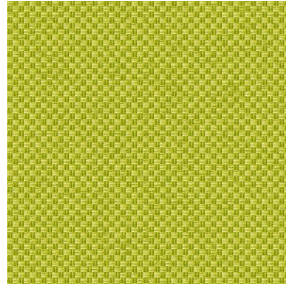
Caractéristiques techniques

| | |
|--------------------|--|
| Non feu | M1 / B1 / IMO PASS / UNI 8456 / 9174 Classe Uno |
| Acoustique | Coeff. moyen de réduction sonore (NRC) : 0.89 |
| Indices optiques | Réflexion lumière : 60 % |
| | Absorption lumière : 40 % |
| | Transmission lumière : 0 % |
| Indices thermiques | réflexion solaire : 56 % |
| | absorption solaire : 44 % |
| | Transmission solaire : 0 % |
| | Transmission UV : 0 % |
| | Gtot : Gt 39 % Fc 65 % |
| Résistance | Solidité lumière (unités Class/8) 6 |
| | Stabilité dimensionnelle (%) |
| | Chaîne -0.5 |
| | Trame 0 |
| | Allongement rupture (mm) |
| | Chaîne 31 |
| | Trame 0 |
| | Résistance rupture (daN) |
| | Chaîne 130 |
| Trame 250 | |

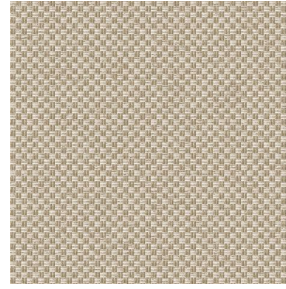
Motif d'impression CHARLOTTE



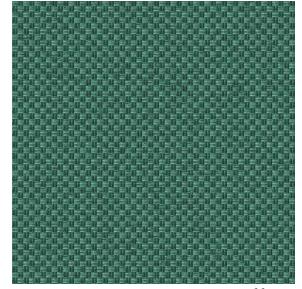
CHARLOTTE Absinthe
132



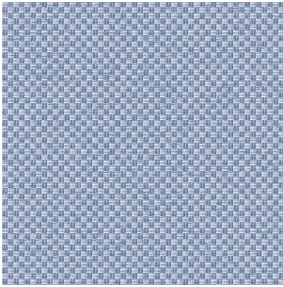
CHARLOTTE Anis 62



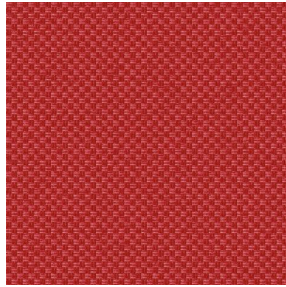
CHARLOTTE Beige 63



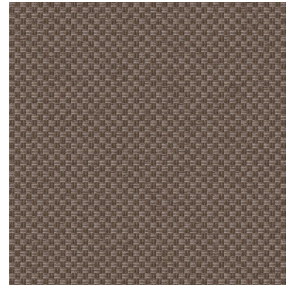
CHARLOTTE Bouteille
101



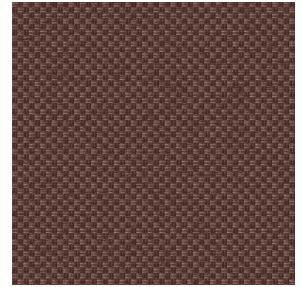
CHARLOTTE Brume 47



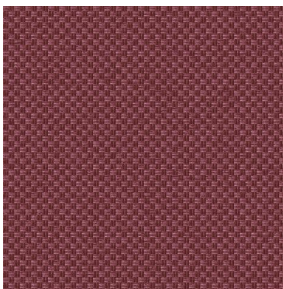
CHARLOTTE Cerise 66



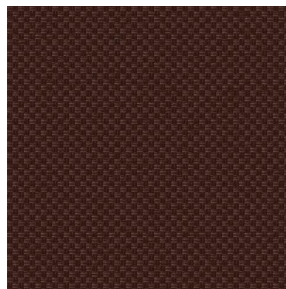
CHARLOTTE Chamois
111



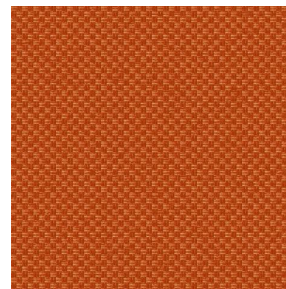
CHARLOTTE Chataigne
55



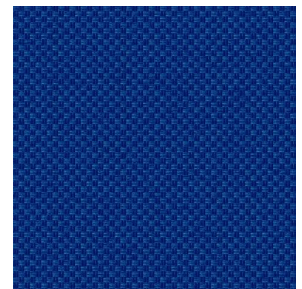
CHARLOTTE Chaudron
118



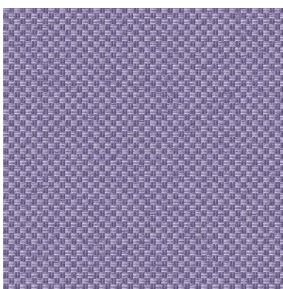
CHARLOTTE Chocolat
70



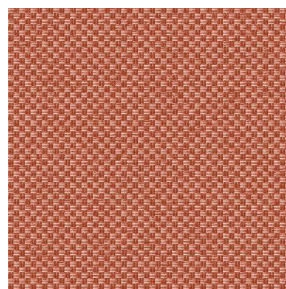
CHARLOTTE Citrouille
136



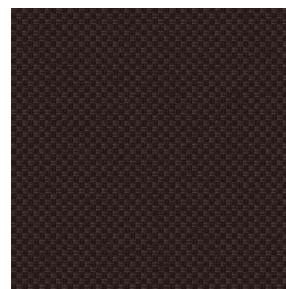
CHARLOTTE Cobalt 114



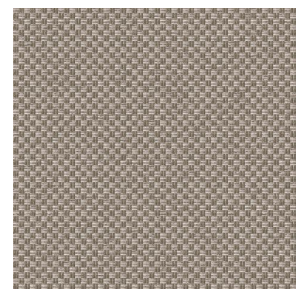
CHARLOTTE Crepuscule
45



CHARLOTTE Cuivre 50



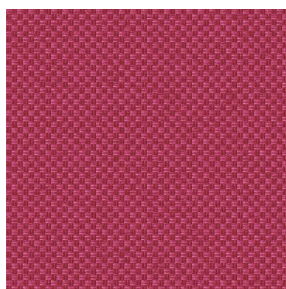
CHARLOTTE Ébene 124



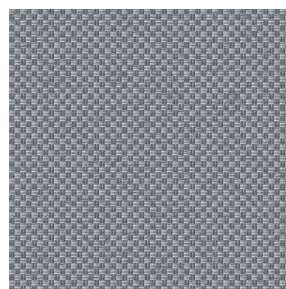
CHARLOTTE Ficelle 09



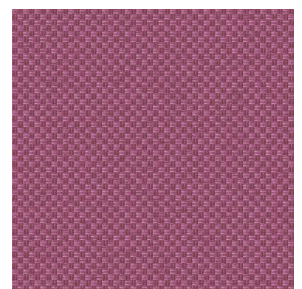
CHARLOTTE Fiesta 131



CHARLOTTE Grenat 56



CHARLOTTE Gris 97



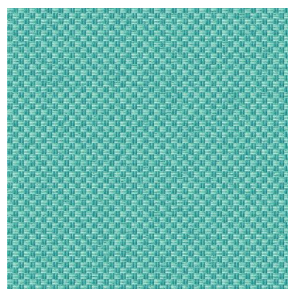
CHARLOTTE Hortensia
134



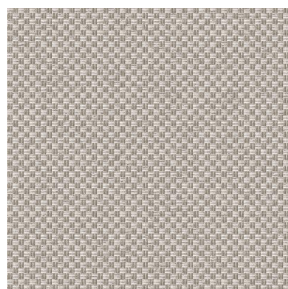
(Headquarters) SOTEXPRO - 510 route de Montchal - 42360 PANISSIÈRES - FRANCE - +33 4 77 27 60 60
(Showroom) Le LAB' SOTEXPRO - 4 rue du Mail - 75002 PARIS - FRANCE

Non-contractual photos and colors - Indicative fitting - Fitting may vary depending on support selected

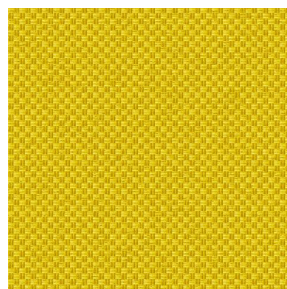
Motif d'impression CHARLOTTE



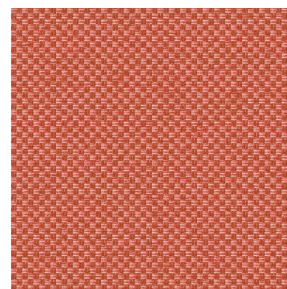
CHARLOTTE Lagon 110



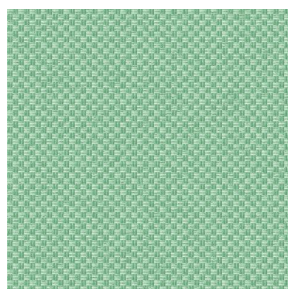
CHARLOTTE Lin 11



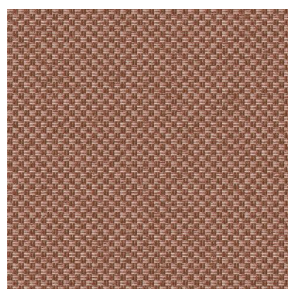
CHARLOTTE Maïs 37



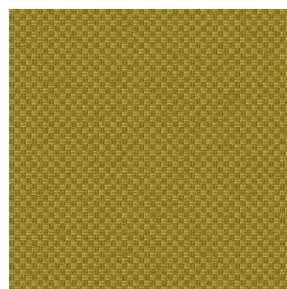
CHARLOTTE Melon 22



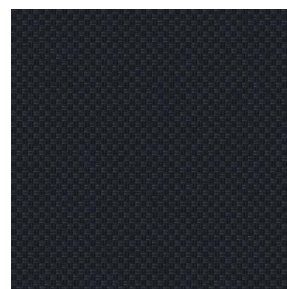
CHARLOTTE Menthe
122



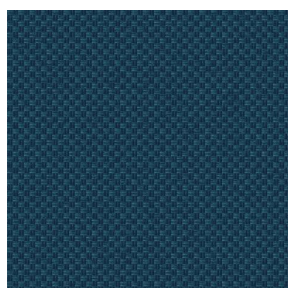
CHARLOTTE Mordore
133



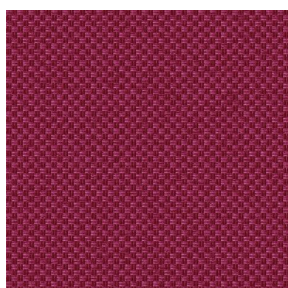
CHARLOTTE Mousse 92



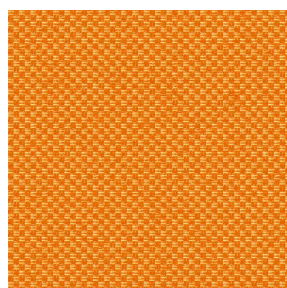
CHARLOTTE Noir 10



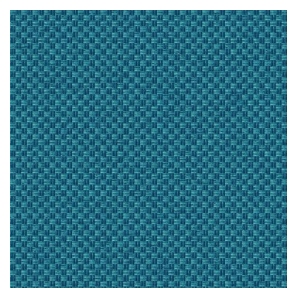
CHARLOTTE Océan 91



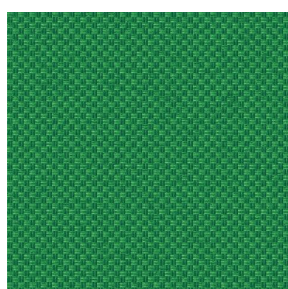
CHARLOTTE Opéra 104



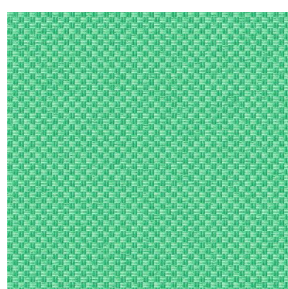
CHARLOTTE Orange 15



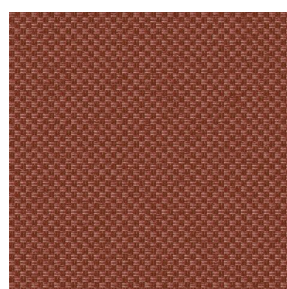
CHARLOTTE Pacifique
54



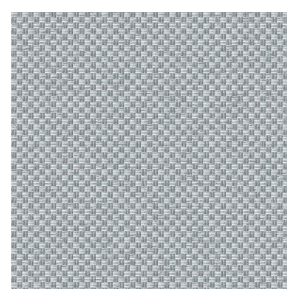
CHARLOTTE Prairie 125



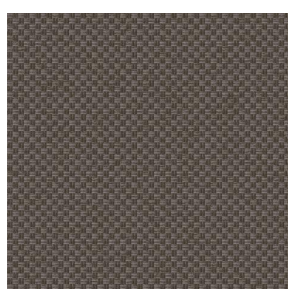
CHARLOTTE Printemps
130



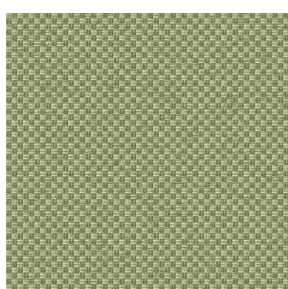
CHARLOTTE Sienne 29



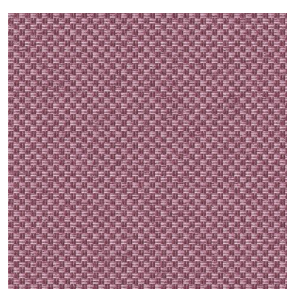
CHARLOTTE Souris 31



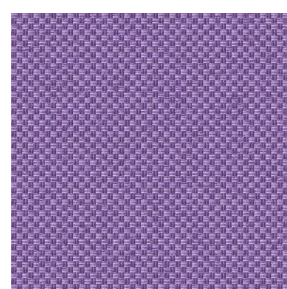
CHARLOTTE Terre 107



CHARLOTTE Tilleul 103



CHARLOTTE Vieux rose
64



CHARLOTTE Violine 105



(Headquarters) SOTEXPRO - 510 route de Montchal - 42360 PANISSIÈRES - FRANCE - +33 4 77 27 60 60
(Showroom) Le LAB' SOTEXPRO - 4 rue du Mail - 75002 PARIS - FRANCE

Non-contractual photos and colors - Indicative fitting - Fitting may vary depending on support selected