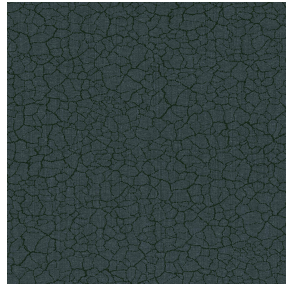




COMET BPI 00  
Support d'impression



TERRA Fusain 71  
Motif d'impression



# Support d'impression **COMET BPI 00** Motif d'impression **TERRA Fusain 71**

support d'impression occultant

## Propriétés techniques



Non feu

Applications Store bateau - Parois japonaises - Rideaux

Composition 100 % polyester/acrylique envers floqué blanc

Poids 390 g/m<sup>2</sup>

Laize 280 cm

Sens Contre sens

Raccord ↔ 0.0 cm ↓ 0.0 cm

Conseils d'entretien

Label

Minimum commande 25 mètre(s) linéaire(s)



Visuel ne prenant pas en compte le support d'impression, le rendu final pouvant varier en fonction du support choisi.

## Caractéristiques techniques

Non feu

EN13773 : 2003 Class 1 / BS 5867 TYPE B / B1 / IMO PASS / UNI 8456 / 9174 Classe Uno

Résistance

Stabilité dimensionnelle (%)

Chaîne 0

Trame 0

Allongement rupture (mm)

Chaîne 38

Trame 38

Résistance rupture (daN)

Chaîne 170

Trame 120

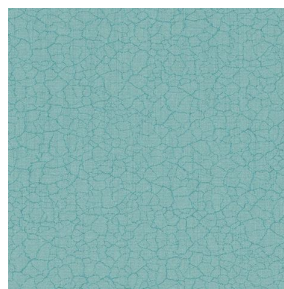
# Motif d'impression TERRA



TERRA Ficelle 09



TERRA Taupe 95



TERRA Ecume 82



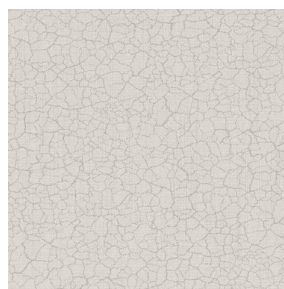
TERRA Rose 129



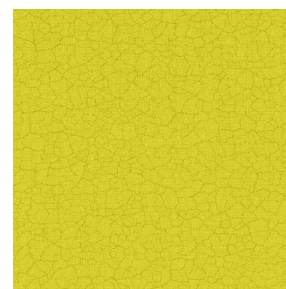
TERRA Brun 23



TERRA Hortensia 134



TERRA Naturel 26



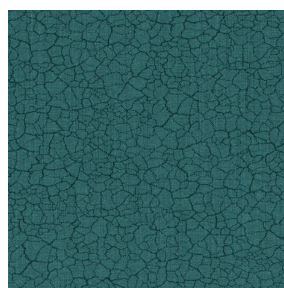
TERRA Anis 62



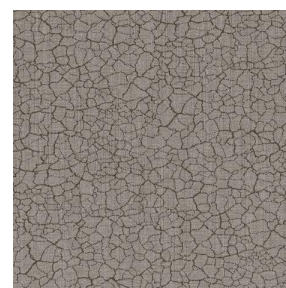
TERRA Lagon 110



TERRA Citrouille 136



TERRA Pacifique 54



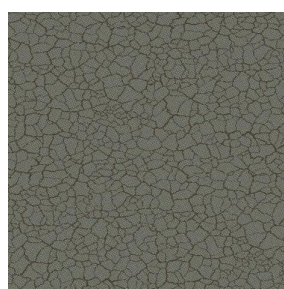
TERRA Chamois 111



TERRA Titanium 98



TERRA Graphite 77



TERRA Gris 97



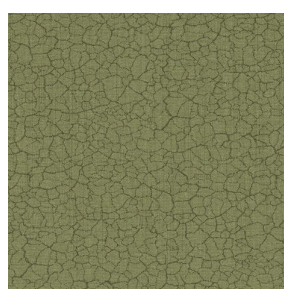
TERRA Ardoise 87



TERRA Violine 105



TERRA Chanvre 72



TERRA Argile 85



TERRA Lin 11



(Headquarters) SOTEXPRO - 510 route de Montchal - 42360 PANISSIÈRES - FRANCE - +33 4 77 27 60 60  
(Showroom) Le LAB' SOTEXPRO - 4 rue du Mail - 75002 PARIS - FRANCE

Non-contractual photos and colors - Indicative fitting - Fitting may vary depending on support selected



## Motif d'impression TERRA



TERRA Genêt 06



TERRA Céladon 135



TERRA Ebène 113



TERRA Ocre 03



(Headquarters) SOTEXPRO - 510 route de Montchal - 42360 PANISSIÈRES - FRANCE - +33 4 77 27 60 60  
(Showroom) Le LAB' SOTEXPRO - 4 rue du Mail - 75002 PARIS - FRANCE

*Non-contractual photos and colors - Indicative fitting - Fitting may vary depending on support selected*