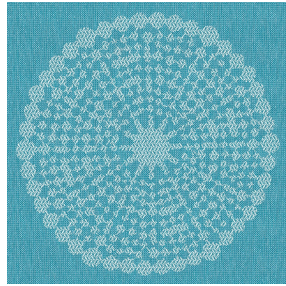




**COMET BPI 00**  
Support d'impression



**ANGELE Turquoise 53**  
Motif d'impression



Visuel ne prenant pas en compte le support d'impression, le rendu final pouvant varier en fonction du support choisi.

## Support d'impression **COMET BPI 00** Motif d'impression **ANGELE** **Turquoise 53**

support d'impression occultant

### Propriétés techniques



Non feu

**Applications** Store bateau - Parois japonaises - Rideaux

**Composition** 100 % polyester/acrylique envers floqué blanc

**Poids** 390 g/m<sup>2</sup>

**Laize** 280 cm

**Sens** Contre sens

**Raccord** ↔ 30.0 cm ↑ 30.0 cm

**Conseils d'entretien**     

**Label**

**Minimum commande** 25 mètre(s) linéaire(s)

## Caractéristiques techniques

Non feu

EN13773 : 2003 Class 1 / BS 5867 TYPE B / B1 / IMO PASS / UNI 8456 / 9174 Classe Uno

Résistance

Stabilité dimensionnelle (%)

Chaîne 0

Trame 0

Allongement rupture (mm)

Chaîne 38

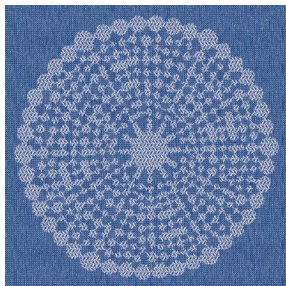
Trame 38

Résistance rupture (daN)

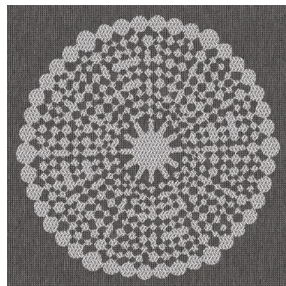
Chaîne 170

Trame 120

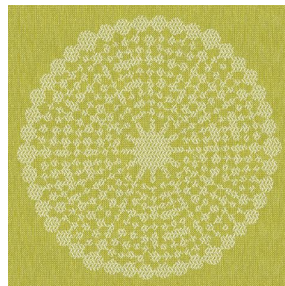
## Motif d'impression ANGELE



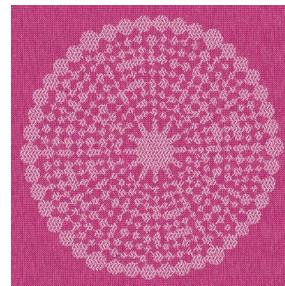
ANGELE Océan 91



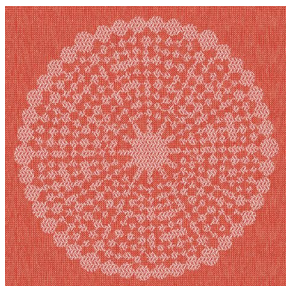
ANGELE Taupe 95



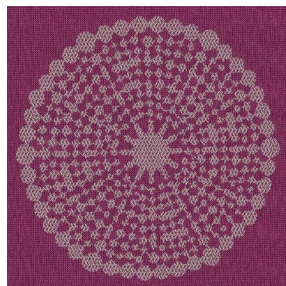
ANGELE Anis 62



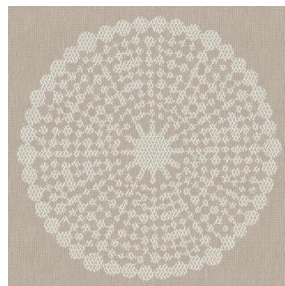
ANGELE Fuchsia 33



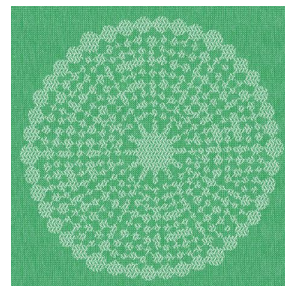
ANGELE Orange 15



ANGELE Prune 84



ANGELE Sable 67



ANGELE Vert 24



(Headquarters) SOTEXPRO - 510 route de Montchal - 42360 PANISSIÈRES - FRANCE - +33 4 77 27 60 60  
(Showroom) Le LAB' SOTEXPRO - 4 rue du Mail - 75002 PARIS - FRANCE

*Non-contractual photos and colors - Indicative fitting - Fitting may vary depending on support selected*