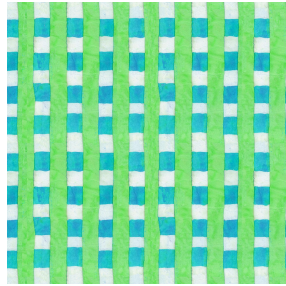




ETAMINE BPI 00
Support d'impression



OAHU Turquoise 53
Motif d'impression



Visuel ne prenant pas en compte le support d'impression, le rendu final pouvant varier en fonction du support choisi.

Support d'impression **ETAMINE BPI 00** Motif d'impression **OAHU Turquoise 53**

Voilage de qualité, léger et aérien.

Propriétés techniques



Non feu



Transparent

Applications Store bateau - Parois japonaises - Rideaux






Composition 100% polyester FR

Poids 95 g/m²

Laize 290 cm

Sens Contre sens

Raccord ↔ 15.0 cm ↓ 21.0 cm

Conseils d'entretien     

Label France Terre Textile / OEKO-TEX STANDARD 100

Minimum commande 25 mètre(s) linéaire(s)

Caractéristiques techniques

Non feu

M1 / B1 / IMO PASS / UNI 8456 / 9174 Classe Uno

Voile transparent

Oui

Résistance

Stabilité dimensionnelle (%)

Chaîne 0

Trame 0

Allongement rupture (mm)

Chaîne 46

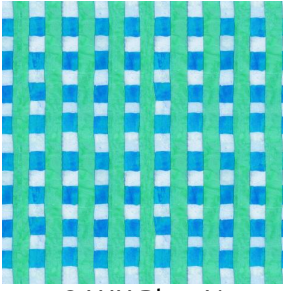
Trame 13

Résistance rupture (daN)

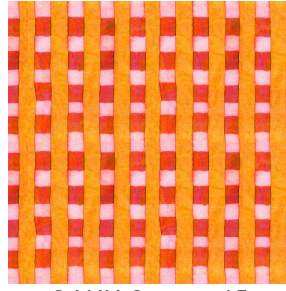
Chaîne 41

Trame 40

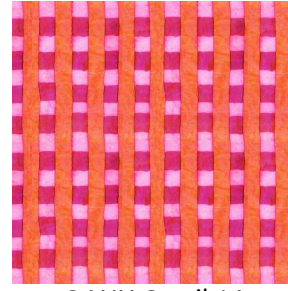
Motif d'impression OAHU



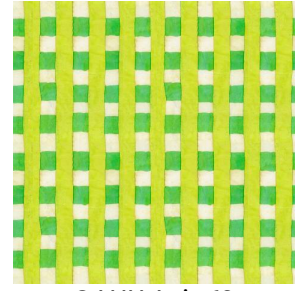
OAHU Bleu 41



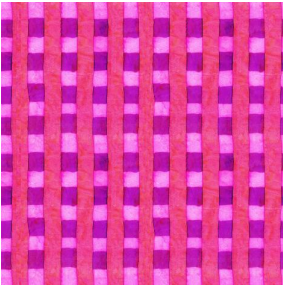
OAHU Orange 15



OAHU Corail 14



OAHU Anis 62



OAHU Fuchsia 33



(Headquarters) SOTEXPRO - 510 route de Montchal - 42360 PANISSIÈRES - FRANCE - +33 4 77 27 60 60
(Showroom) Le LAB' SOTEXPRO - 4 rue du Mail - 75002 PARIS - FRANCE

Non-contractual photos and colors - Indicative fitting - Fitting may vary depending on support selected