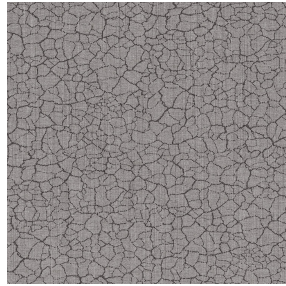


LY Blanc 01
Support d'impression



TERRA Taupe 95
Motif d'impression



Support d'impression **LY Blanc 01** Motif d'impression **TERRA Taupe 95**

Léger voilage effet lin. Les effets flammés du LY sont peu reliés et permettent ainsi à cette qualité d'être imprimée par sublimation

Propriétés techniques



Non feu



Transparent

Applications Store bateau - Parois japonaises - Rideaux

Composition 100% polyester/polyester FR

Poids 90 g/m²

Laize 290 cm

Sens Contre sens

Raccord ↔ 0.0 cm ↓ 0.0 cm

Conseils d'entretien

Label France Terre Textile / OEKO-TEX STANDARD 100

Minimum commande 25 mètre(s) linéaire(s)

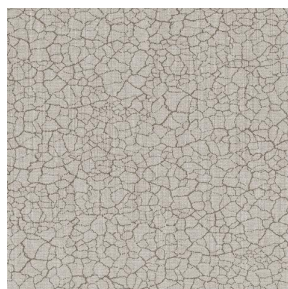


Visuel ne prenant pas en compte le support d'impression, le rendu final pouvant varier en fonction du support choisi.

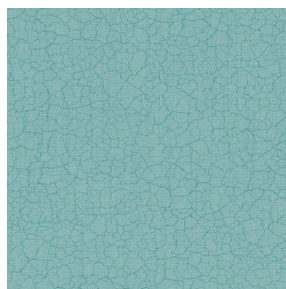
Caractéristiques techniques

Non feu	M1 / B1 / IMO PASS	
Indices optiques	Réflexion lumière :	33 %
	Absorption lumière :	2 %
	Transmission lumière :	65 %
Voile transparent	Oui	
Indices thermiques	réflexion solaire :	32 %
	absorption solaire :	4 %
	Transmission solaire :	64 %
	Transmission UV :	50 %
	Gtot :	Gt 48 % Fc 81 %
Résistance	Solidité lumière (unités Class/8)	6
	Stabilité dimensionnelle (%)	
	Chaîne	0
	Trame	0
	Allongement rupture (mm)	
	Chaîne	69
	Trame	58
	Résistance rupture (daN)	
	Chaîne	47
Trame	24	

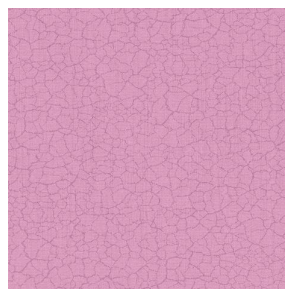
Motif d'impression TERRA



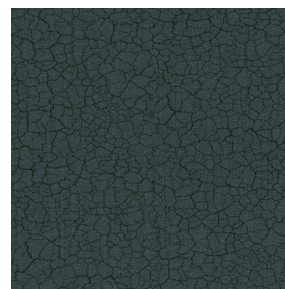
TERRA Ficelle 09



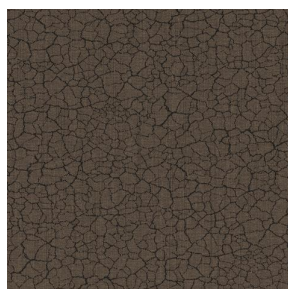
TERRA Ecume 82



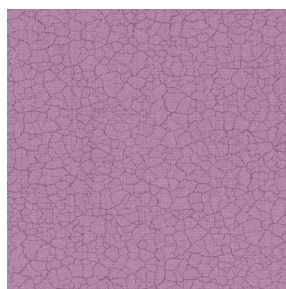
TERRA Rose 129



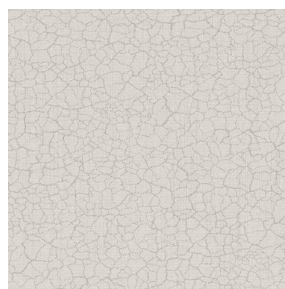
TERRA Fusain 71



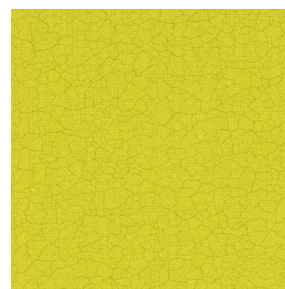
TERRA Brun 23



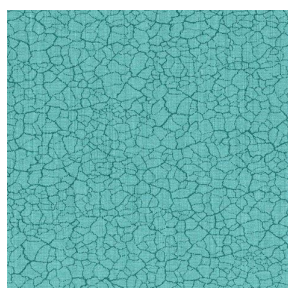
TERRA Hortensia 134



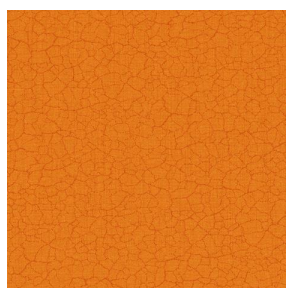
TERRA Naturel 26



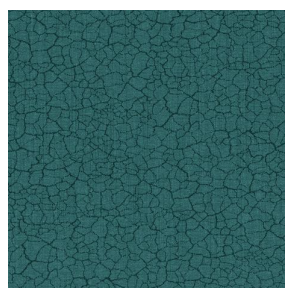
TERRA Anis 62



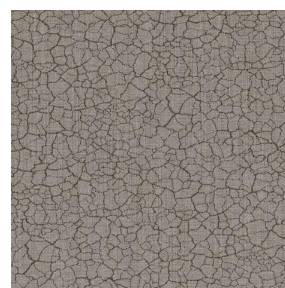
TERRA Lagon 110



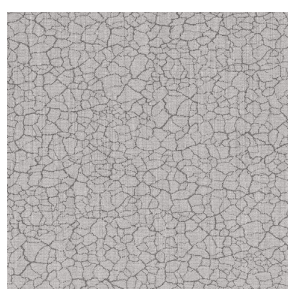
TERRA Citrouille 136



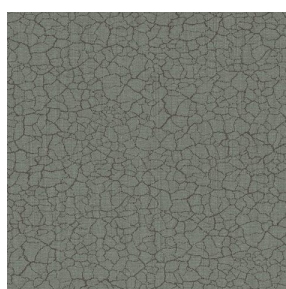
TERRA Pacifique 54



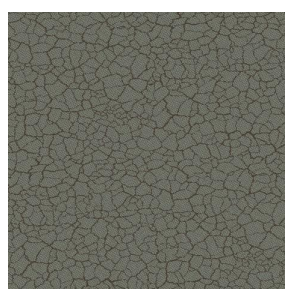
TERRA Chamois 111



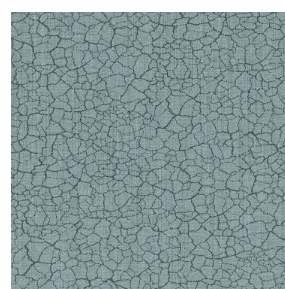
TERRA Titanium 98



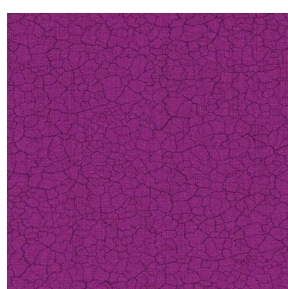
TERRA Graphite 77



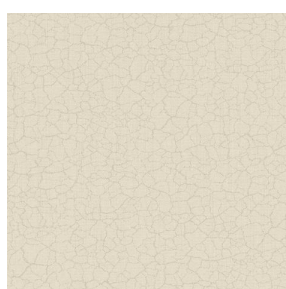
TERRA Gris 97



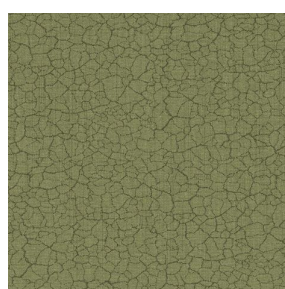
TERRA Ardoise 87



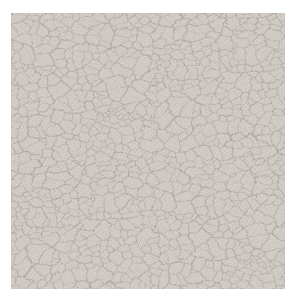
TERRA Violine 105



TERRA Chanvre 72



TERRA Argile 85



TERRA Lin 11



(Headquarters) SOTEXPRO - 510 route de Montchal - 42360 PANISSIÈRES - FRANCE - +33 4 77 27 60 60

Non-contractual photos and colors - Indicative fitting - Fitting may vary depending on support selected

Motif d'impression TERRA



TERRA Genêt 06



TERRA Céladon 135



TERRA Ebène 113



TERRA Ocre 03



(Headquarters) SOTEXPRO - 510 route de Montchal - 42360 PANISSIÈRES - FRANCE - +33 4 77 27 60 60

Non-contractual photos and colors - Indicative fitting - Fitting may vary depending on support selected