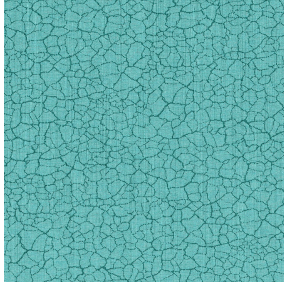


NATTE bpi 00
Support d'impression



TERRA Lagon 110
Motif d'impression



Visuel ne prenant pas en compte le support d'impression, le rendu final pouvant varier en fonction du support choisi.

Support d'impression **NATTE bpi 00** Motif d'impression **TERRA Lagon 110**

Ce tissu pare-solaire sert de support d'impression.

Propriétés techniques



Non feu

Applications Store bateau - Parois japonaises - Couvre lit - Cache sommier - Chemins de lit - Rideaux - Coussin

Composition 100% polyester FR

Poids 230 g/m²

Laize 280 cm

Sens Contre sens

Raccord ↔ 0.0 cm ↓ 0.0 cm

Conseils d'entretien     

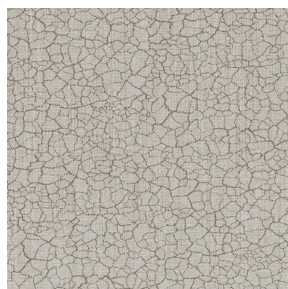
Label France Terre Textile / OEKO-TEX STANDARD 100

Minimum commande 25 mètre(s) linéaire(s)

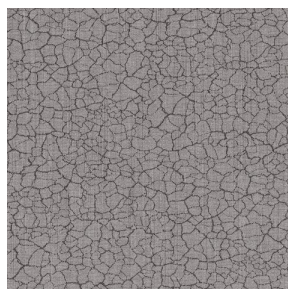
Caractéristiques techniques

Non feu	M1 / IMO PASS	
Acoustique	Coeff. moyen de réduction sonore (NRC) :	0.90
Indices optiques	Réflexion lumière :	5 %
	Absorption lumière :	94 %
	Transmission lumière :	1 %
Indices thermiques	réflexion solaire :	39 %
	absorption solaire :	48 %
	Transmission solaire :	13 %
	Transmission UV :	0 %
	Gtot :	Gt 48 % Fc 69 %
Résistance	Solidité lumière (unités Class/8)	5
	Boulochage	5
	Stabilité dimensionnelle (%)	
	Chaîne	-2
	Trame	-1
	Martindale (Cycles)	40000
	Allongement rupture (mm)	
	Chaîne	38
	Trame	21
	Résistance rupture (daN)	
	Chaîne	150
	Trame	93

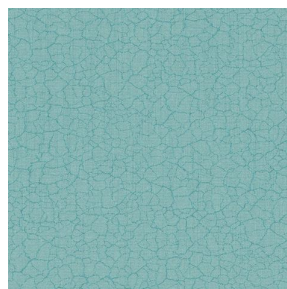
Motif d'impression TERRA



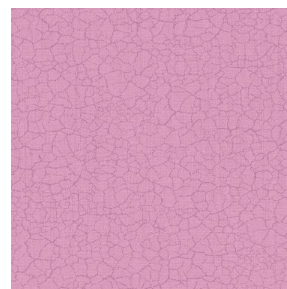
TERRA Ficelle 09



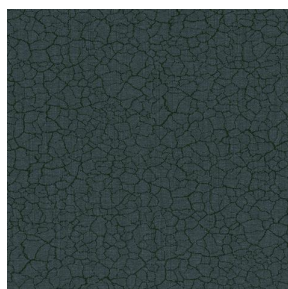
TERRA Taupe 95



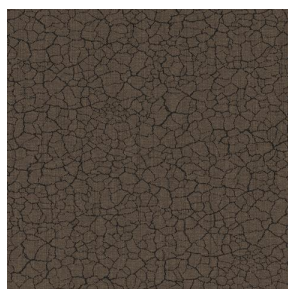
TERRA Ecume 82



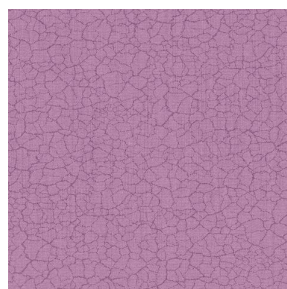
TERRA Rose 129



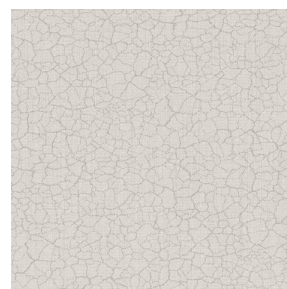
TERRA Fusain 71



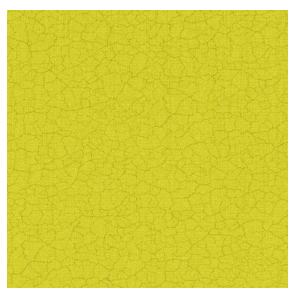
TERRA Brun 23



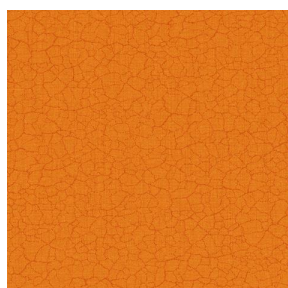
TERRA Hortensia 134



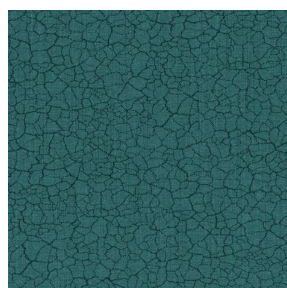
TERRA Naturel 26



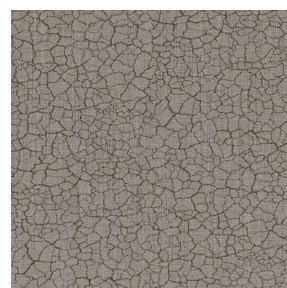
TERRA Anis 62



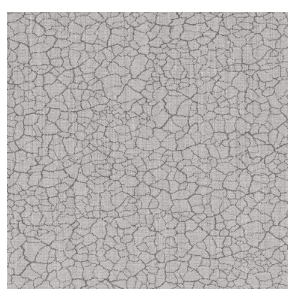
TERRA Citrouille 136



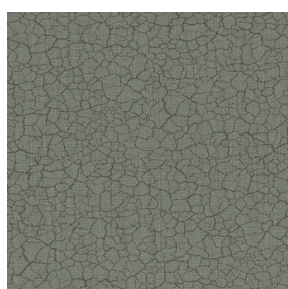
TERRA Pacifique 54



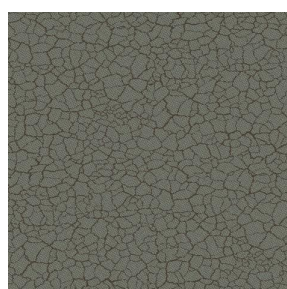
TERRA Chamois 111



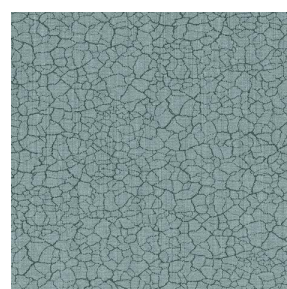
TERRA Titanium 98



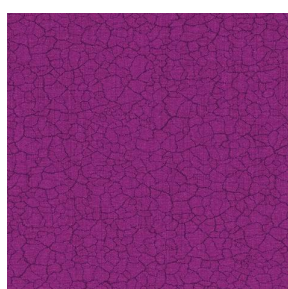
TERRA Graphite 77



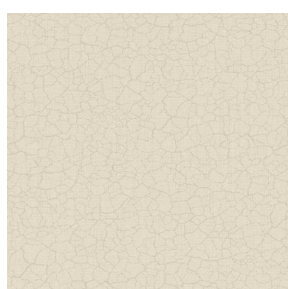
TERRA Gris 97



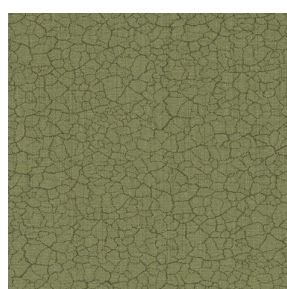
TERRA Ardoise 87



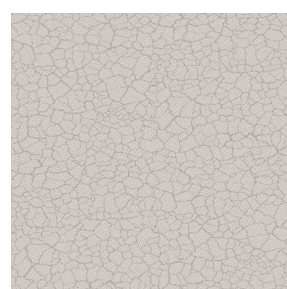
TERRA Violine 105



TERRA Chanvre 72



TERRA Argile 85



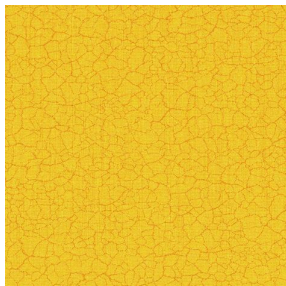
TERRA Lin 11



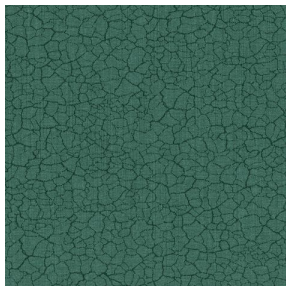
(Headquarters) SOTEXPRO - 510 route de Montchal - 42360 PANISSIÈRES - FRANCE - +33 4 77 27 60 60
(Showroom) Le LAB' SOTEXPRO - 4 rue du Mail - 75002 PARIS - FRANCE

Non-contractual photos and colors - Indicative fitting - Fitting may vary depending on support selected

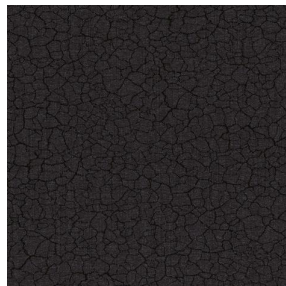
Motif d'impression TERRA



TERRA Genêt 06



TERRA Céladon 135



TERRA Ebene 113



TERRA Ocre 03



(Headquarters) **SOTEXPRO** - 510 route de Montchal - 42360 PANISSIÈRES - FRANCE - +33 4 77 27 60 60
(Showroom) **Le LAB' SOTEXPRO** - 4 rue du Mail - 75002 PARIS - FRANCE

Non-contractual photos and colors - Indicative fitting - Fitting may vary depending on support selected