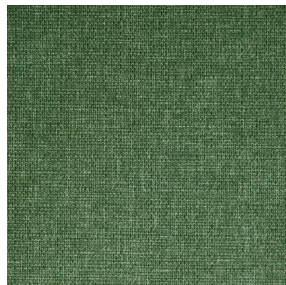
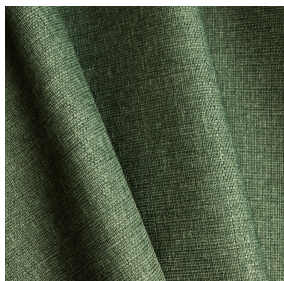


NOCAV BPI 00
Support d'impression



MUNA Lierre 124
Motif d'impression



Support d'impression **NOCAV BPI 00** Motif d'impression **MUNA Lierre 124**

Support d'impression occultant non classé au feu

Propriétés techniques

Applications Store bateau - Parois japonaises - Rideaux

Composition 100 % polyester/acrylique envers floqué blanc

Poids 390 g/m²

Laize 273 cm

Sens Contre sens

Raccord ↔ cm ↓ cm

Conseils d'entretien     

Label

Minimum commande 25 mètre(s) linéaire(s)



Visuel ne prenant pas en compte le support d'impression, le rendu final pouvant varier en fonction du support choisi.

Caractéristiques techniques

Résistance

Stabilité dimensionnelle (%)

Chaîne **0**

Trame **0**

Allongement rupture (mm)

Chaîne **38**

Trame **38**

Résistance rupture (daN)

Chaîne **170**

Trame **120**

Motif d'impression MUNA



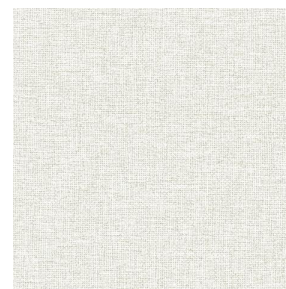
MUNA Cactus 36



MUNA soleil 90



MUNA gris 97



MUNA lin 11



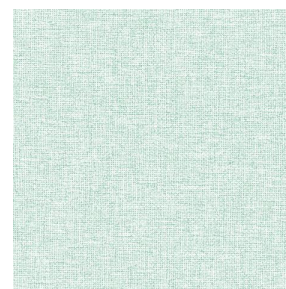
MUNA Melon 22



MUNA souris 31



MUNA lagon 110



MUNA jade 116



MUNA terre 107



MUNA céladon 135



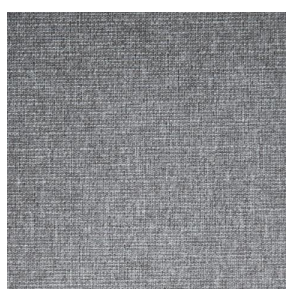
MUNA Coco 142



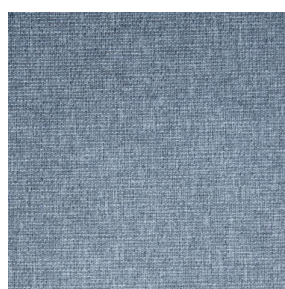
MUNA Sable 67



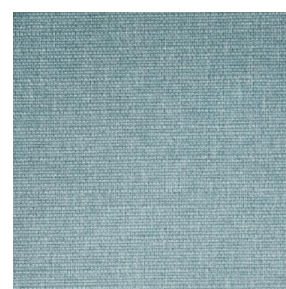
MUNA Saumon 143



MUNA Sisal 140



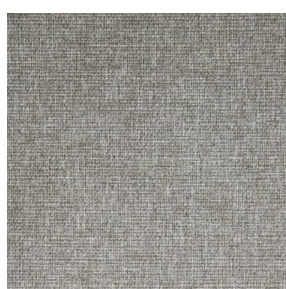
MUNA Tourterelle 138



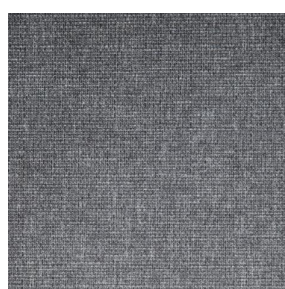
MUNA Ardoise 87



MUNA Tilleul 103



MUNA Chanvre 72



MUNA Graphite 77



MUNA Olive 61



(Headquarters) SOTEXPRO - 510 route de Montchal - 42360 PANISSIÈRES - FRANCE - +33 4 77 27 60 60
(Showroom) Le LAB' SOTEXPRO - 4 rue du Mail - 75002 PARIS - FRANCE

Non-contractual photos and colors - Indicative fitting - Fitting may vary depending on support selected

Motif d'impression MUNA



MUNA Indigo 144



MUNA Sienne 29



MUNA Rouge 21



MUNA Saphir 106



MUNA Violine 105



MUNA Titanium 98



MUNA Acier 18



(Headquarters) SOTEXPRO - 510 route de Montchal - 42360 PANISSIÈRES - FRANCE - +33 4 77 27 60 60
(Showroom) Le LAB' SOTEXPRO - 4 rue du Mail - 75002 PARIS - FRANCE

Non-contractual photos and colors - Indicative fitting - Fitting may vary depending on support selected