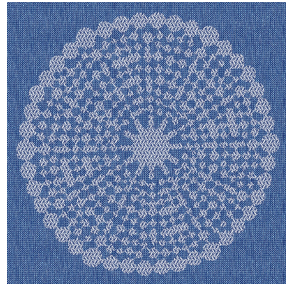




NOCAV BPI 00
Support d'impression



ANGELE Océan 91
Motif d'impression



Visuel ne prenant pas en compte le support d'impression, le rendu final pouvant varier en fonction du support choisi.

Support d'impression **NOCAV BPI 00** Motif d'impression **ANGELE Océan 91**

Support d'impression occultant non classé au feu

Propriétés techniques

Applications Store bateau - Parois japonaises - Rideaux


Composition 100 % polyester/acrylique envers floqué blanc

Poids 390 g/m²

Laize 273 cm

Sens Contre sens

Raccord ↔ 30.0 cm ↓ 30.0 cm

Conseils d'entretien     

Label

Minimum commande 25 mètre(s) linéaire(s)

Caractéristiques techniques

Résistance

Stabilité dimensionnelle (%)

Chaîne 0

Trame 0

Allongement rupture (mm)

Chaîne 38

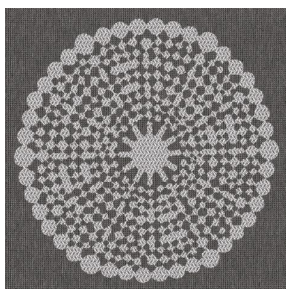
Trame 38

Résistance rupture (daN)

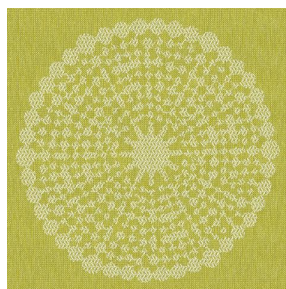
Chaîne 170

Trame 120

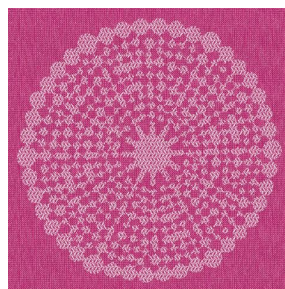
Motif d'impression ANGELE



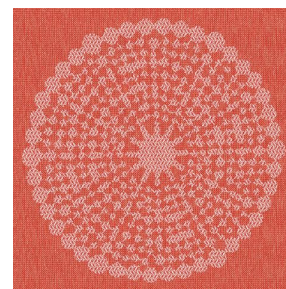
ANGELE Taupe 95



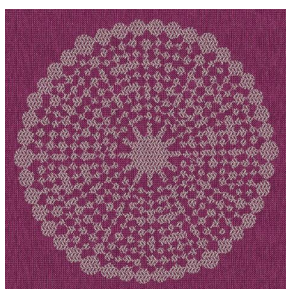
ANGELE Anis 62



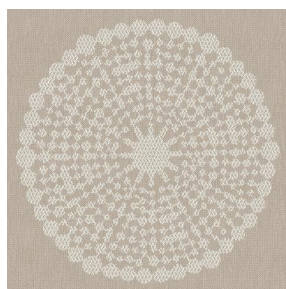
ANGELE Fuchsia 33



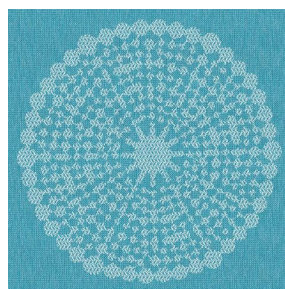
ANGELE Orange 15



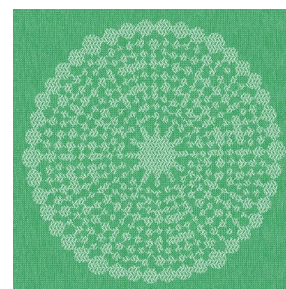
ANGELE Prune 84



ANGELE Sable 67



ANGELE Turquoise 53



ANGELE Vert 24



(Headquarters) SOTEXPRO - 510 route de Montchal - 42360 PANISSIÈRES - FRANCE - +33 4 77 27 60 60
(Showroom) Le LAB' SOTEXPRO - 4 rue du Mail - 75002 PARIS - FRANCE

Non-contractual photos and colors - Indicative fitting - Fitting may vary depending on support selected