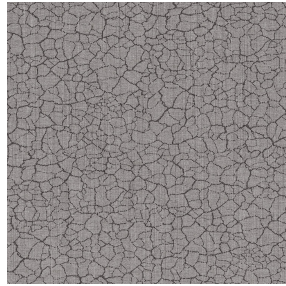


NOCLIN NATUREL 26
Support d'impression



TERRA Taupe 95
Motif d'impression



Visuel ne prenant pas en compte le support d'impression, le rendu final pouvant varier en fonction du support choisi.

Support d'impression **NOCLIN NATUREL 26** Motif d'impression **TERRA Taupe 95**

Occultant double face effet lin et relié, le Noclin est également disponible en support d'impression, pour permettre d'apporter profondeur et relief à vos dessins, attention le coloris beige du fond a une incidence sur le rendu coloristique du dessin.

Propriétés techniques



Non feu



Thermique

Applications Store bateau - Parois japonaises - Rideaux

Composition Polyester enduction acrylique

Poids 380 g/m²

Laize 280 cm

Sens Contre sens

Raccord ↔ 0,0 cm ↓ 0,0 cm

Conseils d'entretien

Label

Minimum commande 25 mètre(s) linéaire(s)

Caractéristiques techniques

Non feu

B1 / IMO PASS

Indices optiques

Réflexion lumière : **53 %**

Absorption lumière : **47 %**

Transmission lumière : **0 %**

Indices thermiques

réflexion solaire : **64 %**

absorption solaire : **36 %**

Transmission solaire : **0 %**

Transmission UV : **0 %**

Gtot : **Gt 36 % Fc 61 %**

Résistance

Solidité lumière (unités Class/8) **4**

Stabilité dimensionnelle (%)

Chaîne **-1**

Trame **-1**

Allongement rupture (mm)

Chaîne **48**

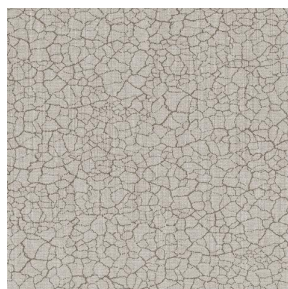
Trame **72**

Résistance rupture (daN)

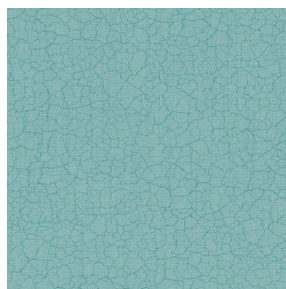
Chaîne **51**

Trame **84**

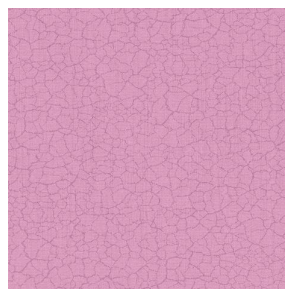
Motif d'impression TERRA



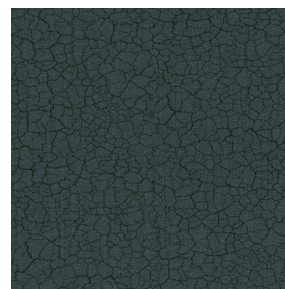
TERRA Ficelle 09



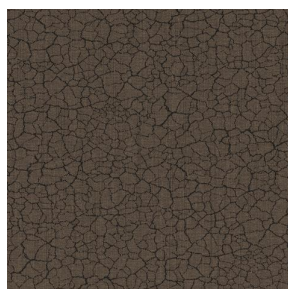
TERRA Ecume 82



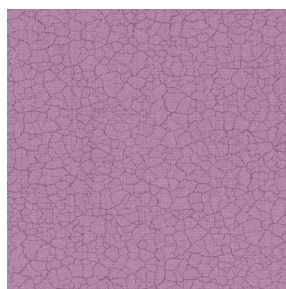
TERRA Rose 129



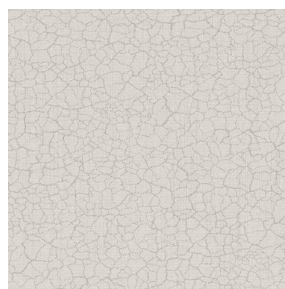
TERRA Fusain 71



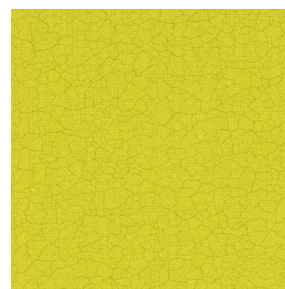
TERRA Brun 23



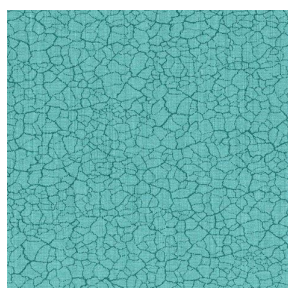
TERRA Hortensia 134



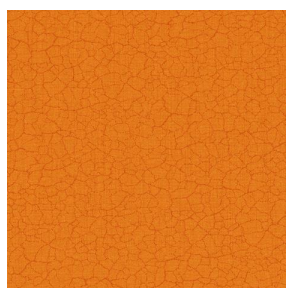
TERRA Naturel 26



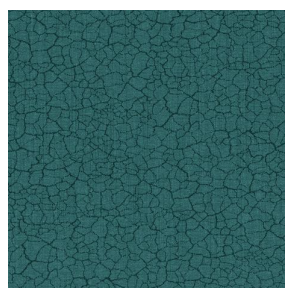
TERRA Anis 62



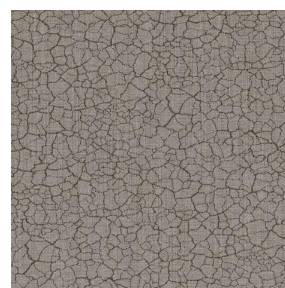
TERRA Lagon 110



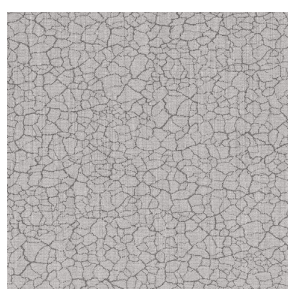
TERRA Citrouille 136



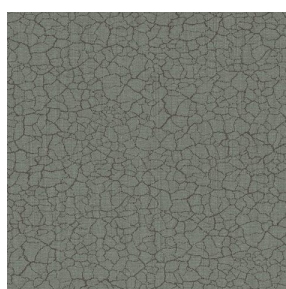
TERRA Pacifique 54



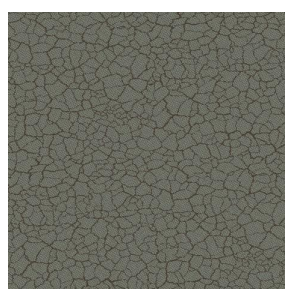
TERRA Chamois 111



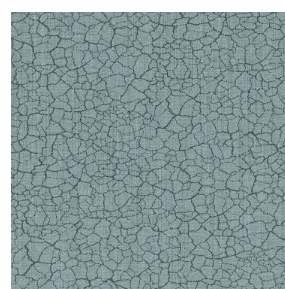
TERRA Titanium 98



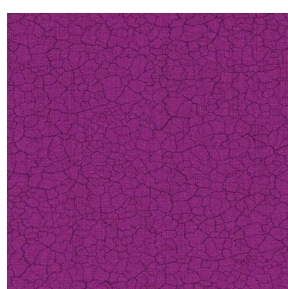
TERRA Graphite 77



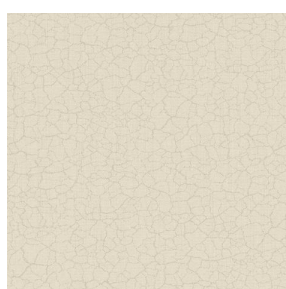
TERRA Gris 97



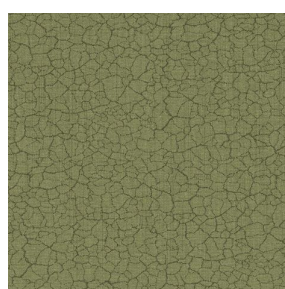
TERRA Ardoise 87



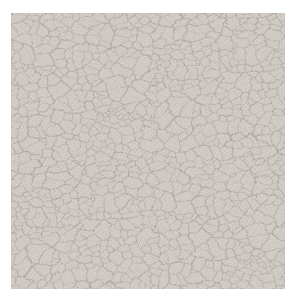
TERRA Violine 105



TERRA Chanvre 72



TERRA Argile 85



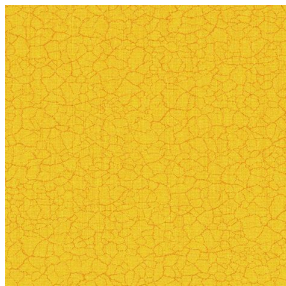
TERRA Lin 11



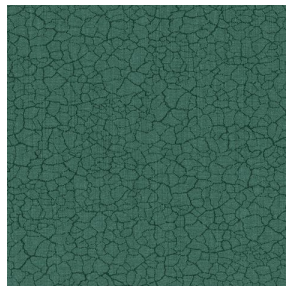
(Headquarters) SOTEXPRO - 510 route de Montchal - 42360 PANISSIÈRES - FRANCE - +33 4 77 27 60 60

Non-contractual photos and colors - Indicative fitting - Fitting may vary depending on support selected

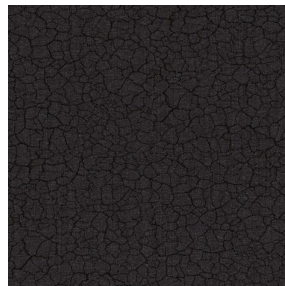
Motif d'impression TERRA



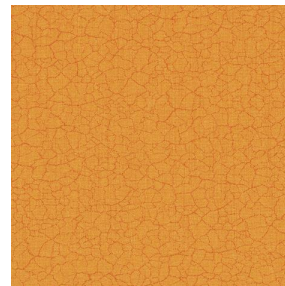
TERRA Genêt 06



TERRA Céladon 135



TERRA Ebene 113



TERRA Ocre 03



(Headquarters) SOTEXPRO - 510 route de Montchal - 42360 PANISSIÈRES - FRANCE - +33 4 77 27 60 60

Non-contractual photos and colors - Indicative fitting - Fitting may vary depending on support selected