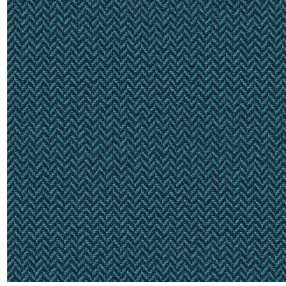


NOCTEA BPI 00  
Support d'impression



SCOURTIN Céladon 135  
Motif d'impression

## Support d'impression **NOCTEA BPI 00** Motif d'impression **SCOURTIN** **Céladon 135**

Ce tissu est utilisé comme support d'impression.

### Propriétés techniques



Non feu

**Applications** Store bateau - Store enrouleur - Parois japonaises - Doublure - Rideaux

**Composition** 100% polyester avec envers acrylique floqué blanc

**Poids** 310 g/m<sup>2</sup>

**Laize** 140 cm

**Sens** Sens normal

**Raccord** ↔<sub>cm</sub> ↓<sub>cm</sub>

**Conseils d'entretien**

**Label**

**Minimum commande** 25 mètre(s) linéaire(s)



Visuel ne prenant pas en compte le support d'impression, le rendu final pouvant varier en fonction du support choisi.

## Caractéristiques techniques

|                    |  |                        |
|--------------------|--|------------------------|
| Non feu            | M1 / IMO PASS                            |                        |
| Acoustique         | Coeff. moyen de réduction sonore (NRC) : | <b>0.38</b>            |
| Indices optiques   | Réflexion lumière :                      | <b>73 %</b>            |
|                    | Absorption lumière :                     | <b>27 %</b>            |
|                    | Transmission lumière :                   | <b>0 %</b>             |
| Indices thermiques | réflexion solaire :                      | <b>64 %</b>            |
|                    | absorption solaire :                     | <b>36 %</b>            |
|                    | Transmission solaire :                   | <b>0 %</b>             |
|                    | Transmission UV :                        | <b>0 %</b>             |
|                    | Gtot :                                   | <b>Gt 37 % Fc 52 %</b> |
| Résistance         | Solidité lumière (unités Class/8)        | <b>5</b>               |
|                    | Stabilité dimensionnelle (%)             |                        |
|                    | Chaîne                                   | <b>0</b>               |
|                    | Trame                                    | <b>0</b>               |
|                    | Allongement rupture (mm)                 |                        |
|                    | Chaîne                                   | <b>38</b>              |
|                    | Trame                                    | <b>27</b>              |
|                    | Résistance rupture (daN)                 |                        |
|                    | Chaîne                                   | <b>42</b>              |
| Trame              | <b>64</b>                                |                        |

# Motif d'impression SCOURTIN



SCOURTIN Beige 63



SCOURTIN Fuchsia 33



SCOURTIN Sapin 126



SCOURTIN Bergamote  
121



SCOURTIN Anthracite  
38



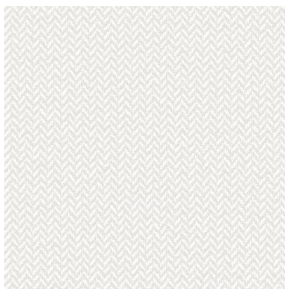
SCOURTIN Violine 105



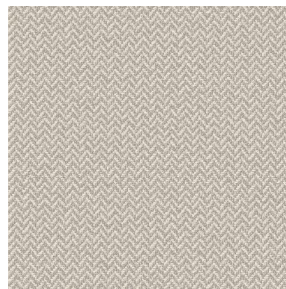
SCOURTIN Pacifique 54



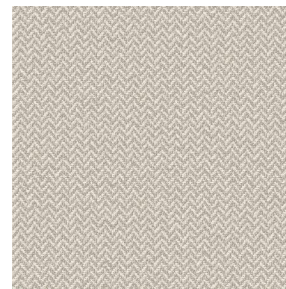
SCOURTIN Rose 129



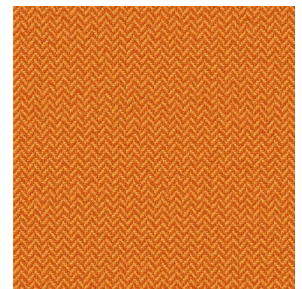
SCOURTIN Blanc 01



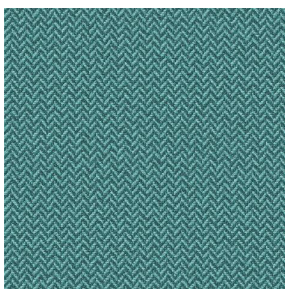
SCOURTIN Lin 11



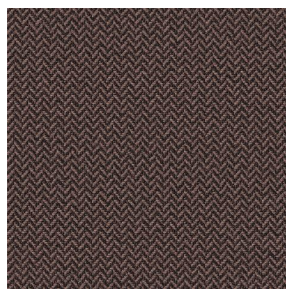
SCOURTIN Naturel 26



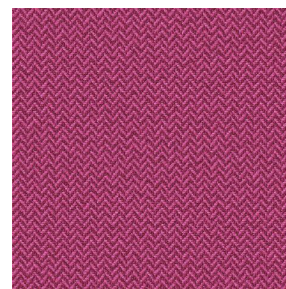
SCOURTIN Citrouille  
136



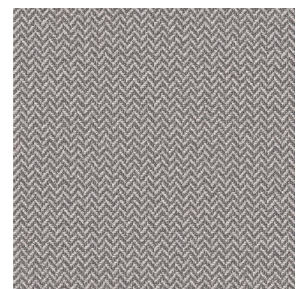
SCOURTIN Turquoise 53



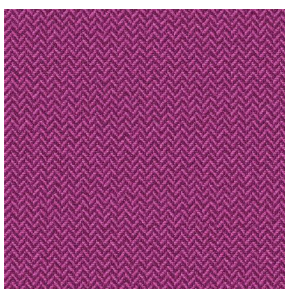
SCOURTIN Brun 23



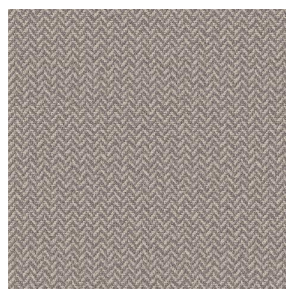
SCOURTIN Hortensia  
134



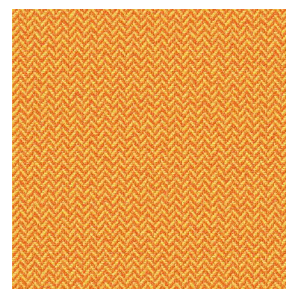
SCOURTIN Orage 123



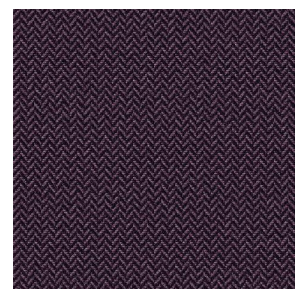
SCOURTIN Rubis 59



SCOURTIN Ficelle 09



SCOURTIN Maïs 37



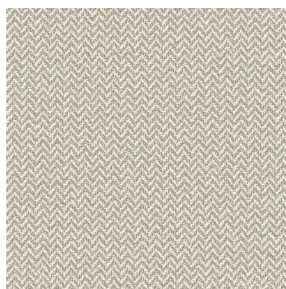
SCOURTIN Ebene 113



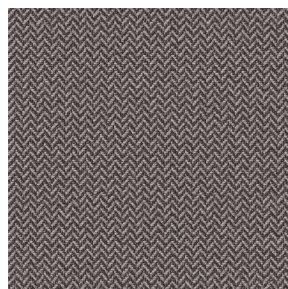
(Headquarters) SOTEXPRO - 510 route de Montchal - 42360 PANISSIÈRES - FRANCE - +33 4 77 27 60 60

*Non-contractual photos and colors - Indicative fitting - Fitting may vary depending on support selected*

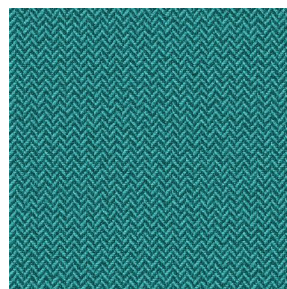
## Motif d'impression SCOURTIN



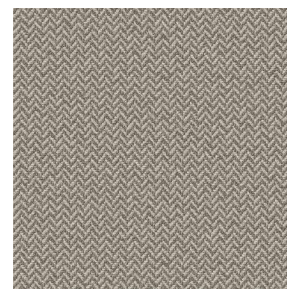
SCOURTIN Tourterelle  
138



SCOURTIN Titanium 98



SCOURTIN Lagon 110



SCOURTIN Gris 97



(Headquarters) SOTEXPRO - 510 route de Montchal - 42360 PANISSIÈRES - FRANCE - +33 4 77 27 60 60

Non-contractual photos and colors - Indicative fitting - Fitting may vary depending on support selected