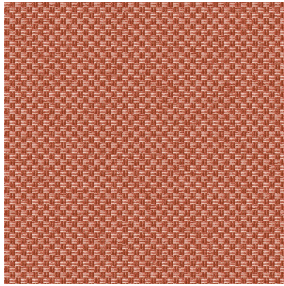


NOCTEA BPI 00
Support d'impression



Visuel ne prenant pas en compte le support d'impression, le rendu final pouvant varier en fonction du support choisi.



CHARLOTTE Cuivre 50
Motif d'impression



Support d'impression **NOCTEA BPI 00** Motif d'impression **CHARLOTTE** **Cuivre 50**

Ce tissu est utilisé comme support d'impression.

Propriétés techniques



Non feu

Applications Store bateau - Store enrouleur - Parois japonaises - Doublure - Rideaux

Composition 100% polyester avec envers acrylique floqué blanc

Poids 310 g/m²

Laize 280 cm

Sens Contre sens

Raccord ↔ 0.0 cm ↓ 0.0 cm

Conseils d'entretien     

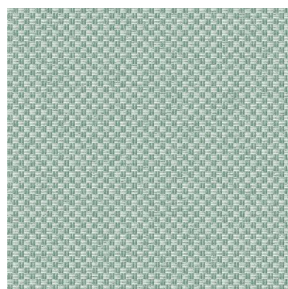
Label

Minimum commande 25 mètre(s) linéaire(s)

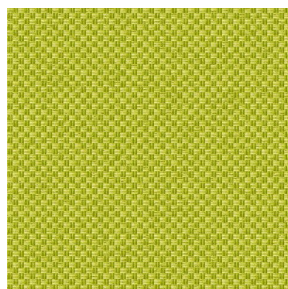
Caractéristiques techniques

Non feu	M1 / BS 5867 TYPE C / B1 / IMO PASS	
Indices optiques	Réflexion lumière :	71 %
	Absorption lumière :	29 %
	Transmission lumière :	0 %
Indices thermiques	réflexion solaire :	66 %
	absorption solaire :	34 %
	Transmission solaire :	0 %
	Transmission UV :	0 %
	Gtot :	Gt 35 % Fc 60 %
Résistance	Solidité lumière (unités Class/8)	4
	Stabilité dimensionnelle (%)	
	Chaîne	-0,5
	Trame	0
	Allongement rupture (mm)	
	Chaîne	19
	Trame	22
	Résistance rupture (daN)	
	Chaîne	37
	Trame	57

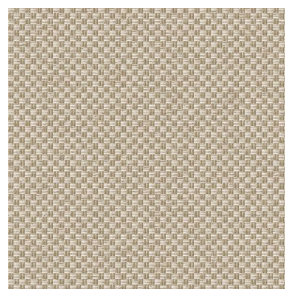
Motif d'impression CHARLOTTE



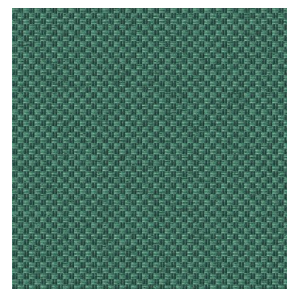
CHARLOTTE Absinthe
132



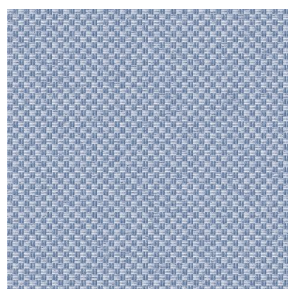
CHARLOTTE Anis 62



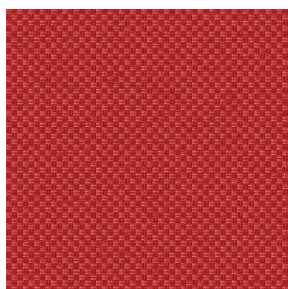
CHARLOTTE Beige 63



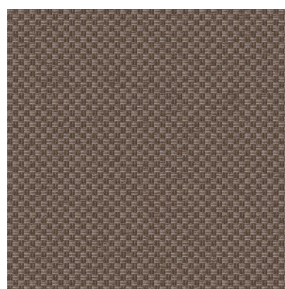
CHARLOTTE Bouteille
101



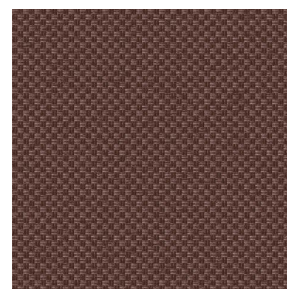
CHARLOTTE Brume 47



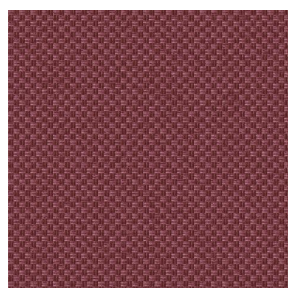
CHARLOTTE Cerise 66



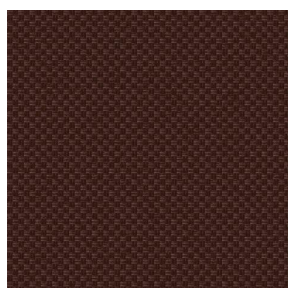
CHARLOTTE Chamois
111



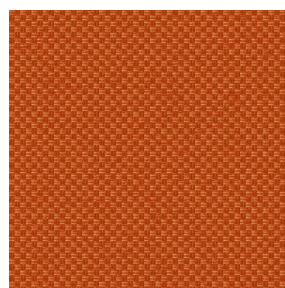
CHARLOTTE Chataigne
55



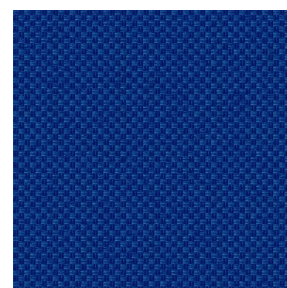
CHARLOTTE Chaudron
118



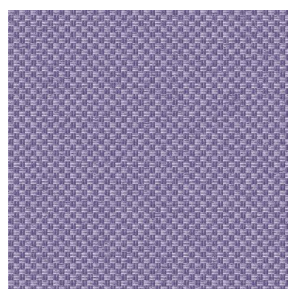
CHARLOTTE Chocolat
70



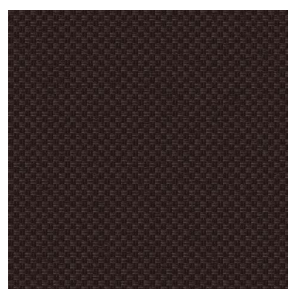
CHARLOTTE Citrouille
136



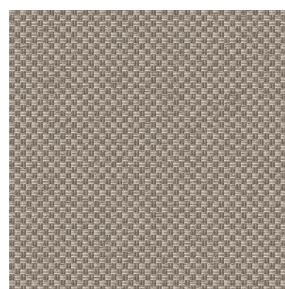
CHARLOTTE Cobalt 114



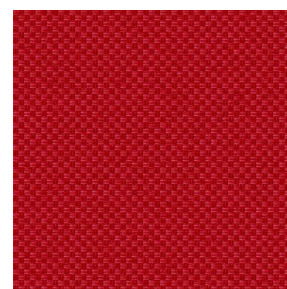
CHARLOTTE Crepuscule
45



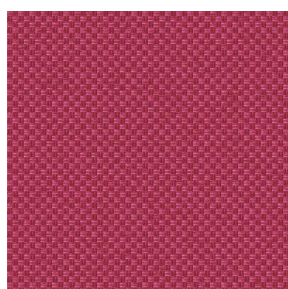
CHARLOTTE Ebene 124



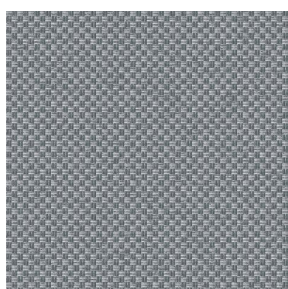
CHARLOTTE Ficelle 09



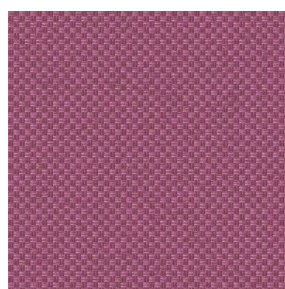
CHARLOTTE Fiesta 131



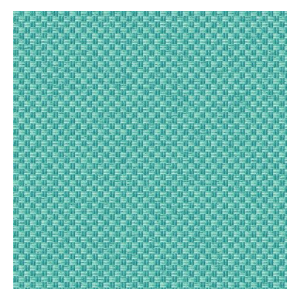
CHARLOTTE Grenat 56



CHARLOTTE Gris 97



CHARLOTTE Hortensia
134



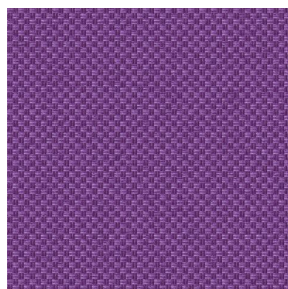
CHARLOTTE Lagon 110



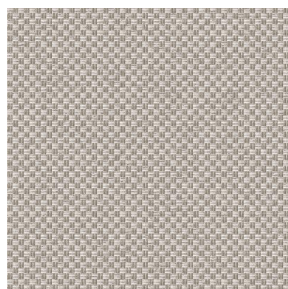
(Headquarters) SOTEXPRO - 510 route de Montchal - 42360 PANISSIÈRES - FRANCE - +33 4 77 27 60 60
(Showroom) Le LAB' SOTEXPRO - 4 rue du Mail - 75002 PARIS - FRANCE

Non-contractual photos and colors - Indicative fitting - Fitting may vary depending on support selected

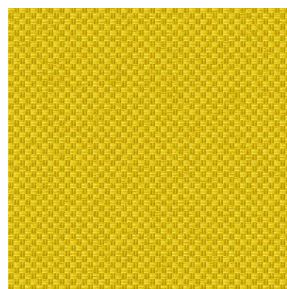
Motif d'impression CHARLOTTE



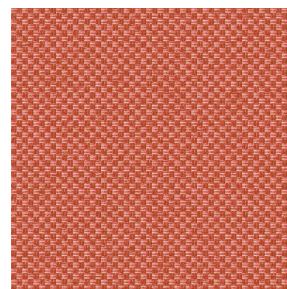
CHARLOTTE Lilas 19



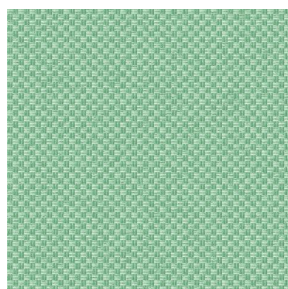
CHARLOTTE Lin 11



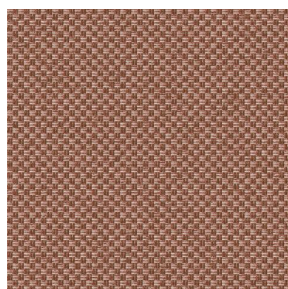
CHARLOTTE Maïs 37



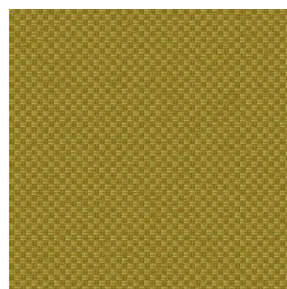
CHARLOTTE Melon 22



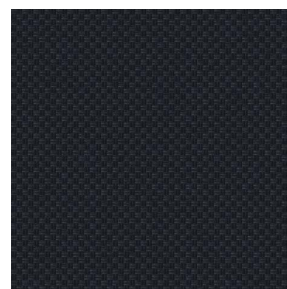
CHARLOTTE Menthe
122



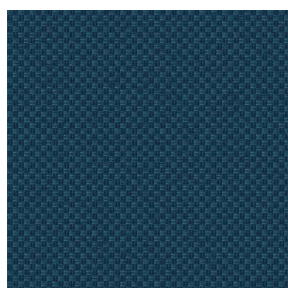
CHARLOTTE Mordore
133



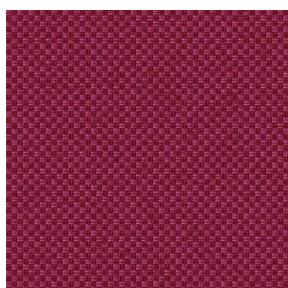
CHARLOTTE Mousse 92



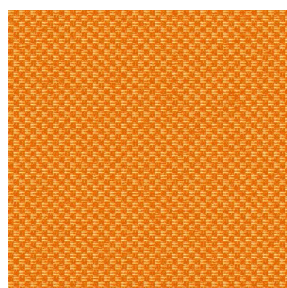
CHARLOTTE Noir 10



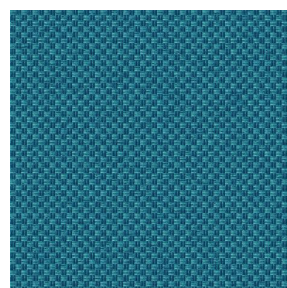
CHARLOTTE Océan 91



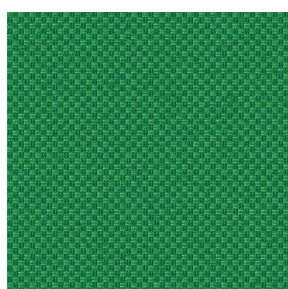
CHARLOTTE Opéra 104



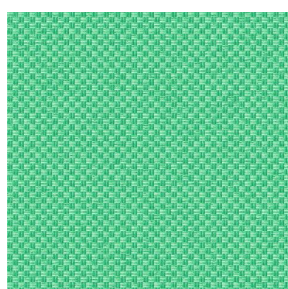
CHARLOTTE Orange 15



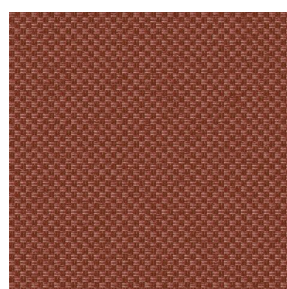
CHARLOTTE Pacifique
54



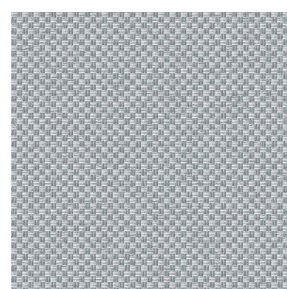
CHARLOTTE Prairie 125



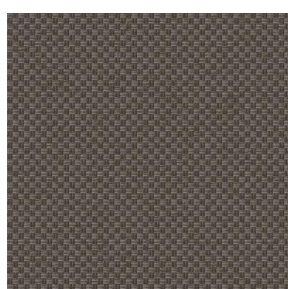
CHARLOTTE Printemps
130



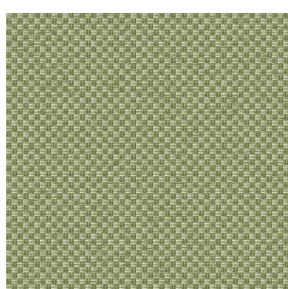
CHARLOTTE Sienne 29



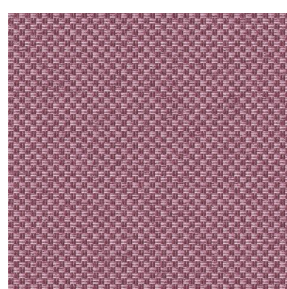
CHARLOTTE Souris 31



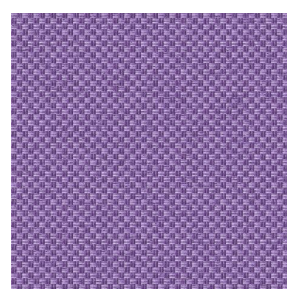
CHARLOTTE Terre 107



CHARLOTTE Tilleul 103



CHARLOTTE Vieux rose
64



CHARLOTTE Viole 105



(Headquarters) SOTEXPRO - 510 route de Montchal - 42360 PANISSIÈRES - FRANCE - +33 4 77 27 60 60
(Showroom) Le LAB' SOTEXPRO - 4 rue du Mail - 75002 PARIS - FRANCE

Non-contractual photos and colors - Indicative fitting - Fitting may vary depending on support selected