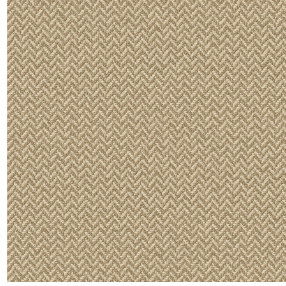


NOCTEA BPI 00
Support d'impression



SCOURTIN Beige 63
Motif d'impression

Support d'impression **NOCTEA BPI 00** Motif d'impression **SCOURTIN Beige 63**

Ce tissu est utilisé comme support d'impression.

Propriétés techniques



Non feu

Applications Store bateau - Store enrouleur - Parois japonaises - Doublure - Rideaux

Composition 100% polyester avec envers acrylique floqué blanc

Poids 310 g/m²

Laize 280 cm

Sens Contre sens

Raccord ↔_{cm} ↓_{cm}

Conseils d'entretien

Label

Minimum commande 1 mètre(s) linéaire(s)



Visuel ne prenant pas en compte le support d'impression, le rendu final pouvant varier en fonction du support choisi.

Caractéristiques techniques

Non feu

M1 / BS 5867 TYPE C / B1 / IMO PASS

Indices optiques

Réflexion lumière : **71 %**

Absorption lumière : **29 %**

Transmission lumière : **0 %**

Indices thermiques

réflexion solaire : **66 %**

absorption solaire : **34 %**

Transmission solaire : **0 %**

Transmission UV : **0 %**

Gtot : **Gt 35 % Fc 60 %**

Résistance

Solidité lumière (unités Class/8) **4**

Stabilité dimensionnelle (%)

Chaîne **-0,5**

Trame **0**

Allongement rupture (mm)

Chaîne **19**

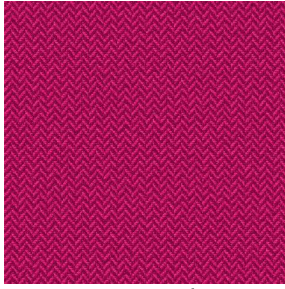
Trame **22**

Résistance rupture (daN)

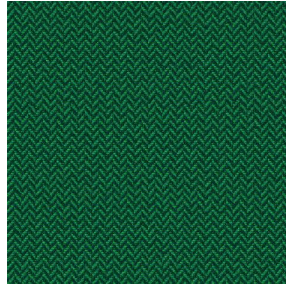
Chaîne **37**

Trame **57**

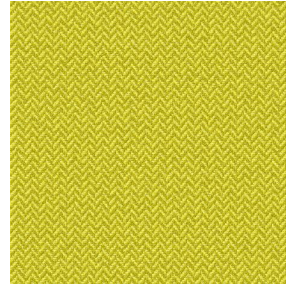
Motif d'impression SCOURTIN



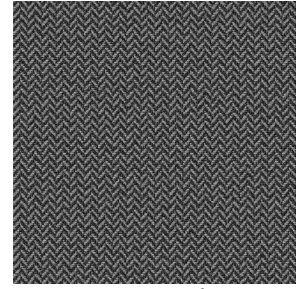
SCOURTIN Fuchsia 33



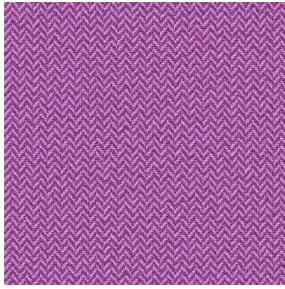
SCOURTIN Sapin 126



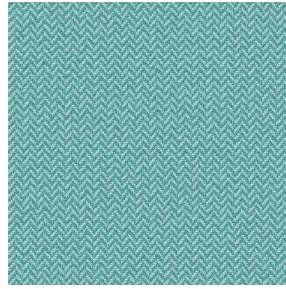
SCOURTIN Bergamote
121



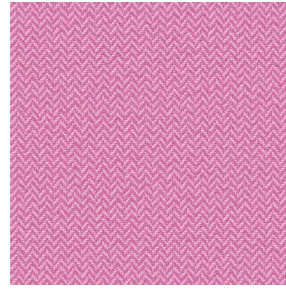
SCOURTIN Anthracite
38



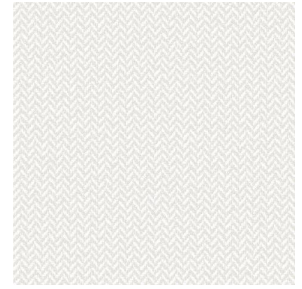
SCOURTIN Violine 105



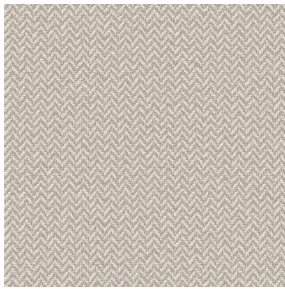
SCOURTIN Pacifique 54



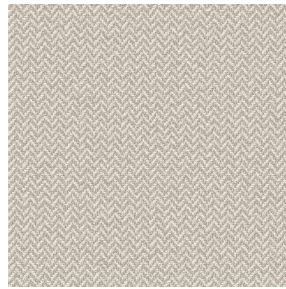
SCOURTIN Rose 129



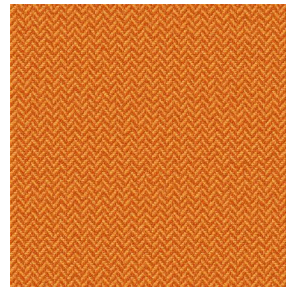
SCOURTIN Blanc 01



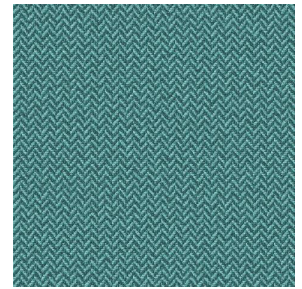
SCOURTIN Lin 11



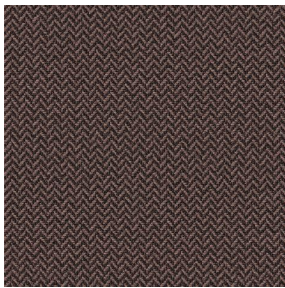
SCOURTIN Naturel 26



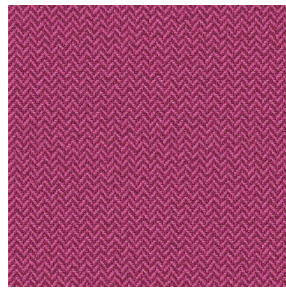
SCOURTIN Citrouille
136



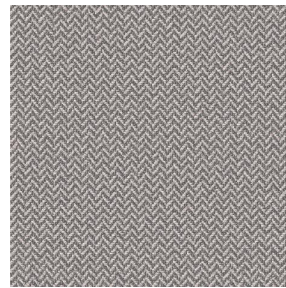
SCOURTIN Turquoise 53



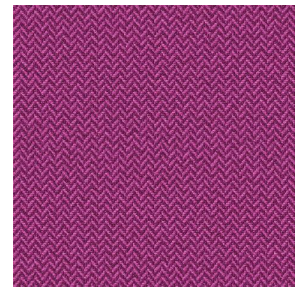
SCOURTIN Brun 23



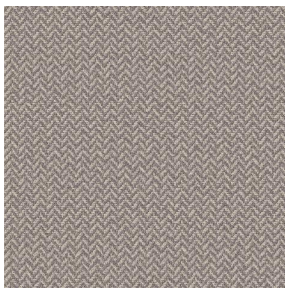
SCOURTIN Hortensia
134



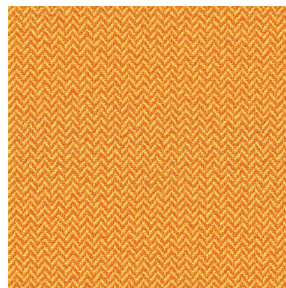
SCOURTIN Orage 123



SCOURTIN Rubis 59



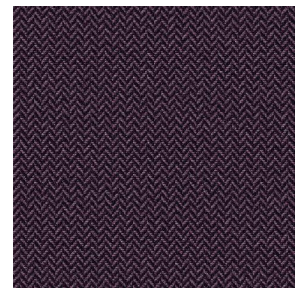
SCOURTIN Ficelle 09



SCOURTIN Maïs 37



SCOURTIN Céladon 135



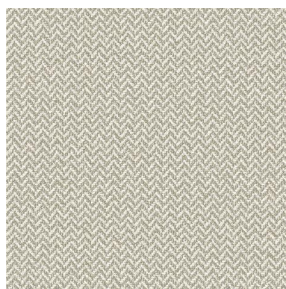
SCOURTIN Ebene 113



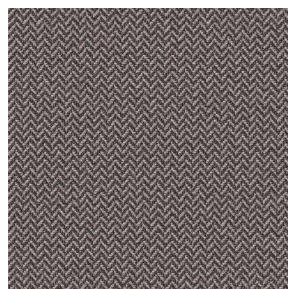
(Headquarters) SOTEXPRO - 510 route de Montchal - 42360 PANISSIÈRES - FRANCE - +33 4 77 27 60 60

Non-contractual photos and colors - Indicative fitting - Fitting may vary depending on support selected

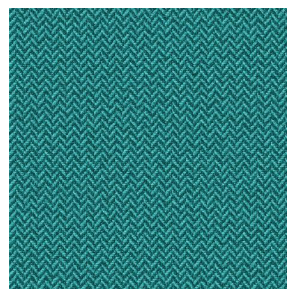
Motif d'impression SCOURTIN



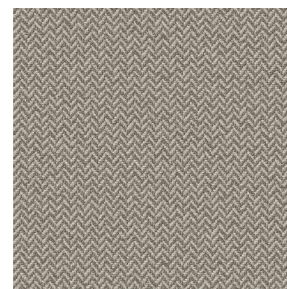
SCOURTIN Tourterelle
138



SCOURTIN Titanium 98



SCOURTIN Lagon 110



SCOURTIN Gris 97



(Headquarters) SOTEXPRO - 510 route de Montchal - 42360 PANISSIÈRES - FRANCE - +33 4 77 27 60 60

Non-contractual photos and colors - Indicative fitting - Fitting may vary depending on support selected