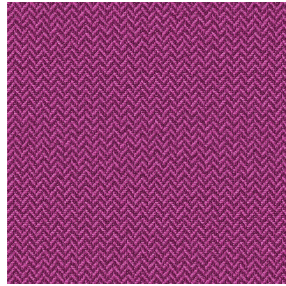




**NOCTEA BPI 00**  
Support d'impression



**SCOURTIN Rubis 59**  
Motif d'impression



Visuel ne prenant pas en compte le support d'impression, le rendu final pouvant varier en fonction du support choisi.

## Support d'impression **NOCTEA BPI 00** Motif d'impression **SCOURTIN Rubis 59**

Ce tissu est utilisé comme support d'impression.

### Propriétés techniques



Non feu

**Applications** Store bateau - Store enrouleur - Parois japonaises - Doublure - Rideaux

**Composition** 100% polyester avec envers acrylique floqué blanc

**Poids** 310 g/m<sup>2</sup>

**Laize** 280 cm

**Sens** Contre sens

**Raccord** ↔<sub>cm</sub> ↓<sub>cm</sub>

**Conseils d'entretien**     

**Label**

**Minimum commande** 25 mètre(s) linéaire(s)

## Caractéristiques techniques

Non feu

M1 / BS 5867 TYPE C / B1 / IMO PASS

Indices optiques

Réflexion lumière : **71 %**

Absorption lumière : **29 %**

Transmission lumière : **0 %**

Indices thermiques

réflexion solaire : **66 %**

absorption solaire : **34 %**

Transmission solaire : **0 %**

Transmission UV : **0 %**

Gtot : **Gt 35 % Fc 60 %**

Résistance

Solidité lumière (unités Class/8) **4**

Stabilité dimensionnelle (%)

Chaîne **-0,5**

Trame **0**

Allongement rupture (mm)

Chaîne **19**

Trame **22**

Résistance rupture (daN)

Chaîne **37**

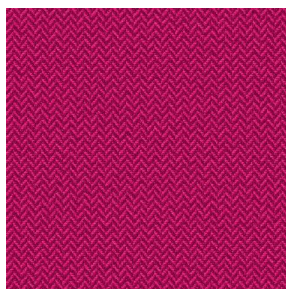
Trame **57**



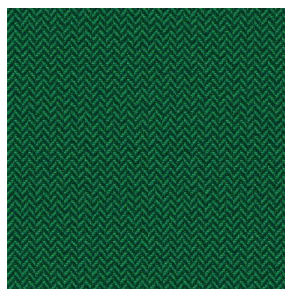
# Motif d'impression SCOURTIN



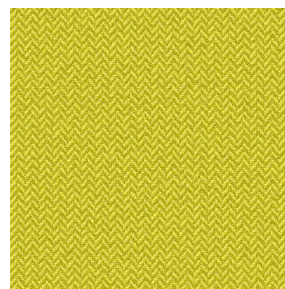
SCOURTIN Beige 63



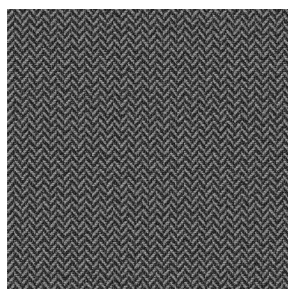
SCOURTIN Fuchsia 33



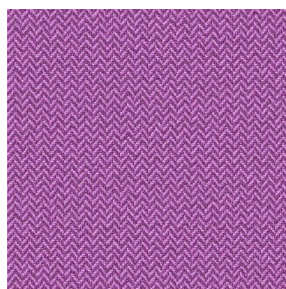
SCOURTIN Sapin 126



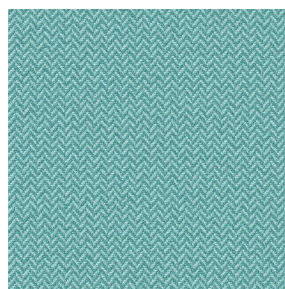
SCOURTIN Bergamote  
121



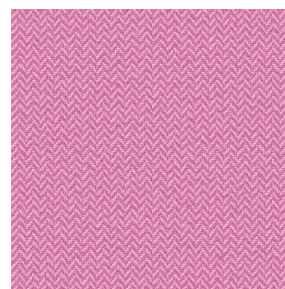
SCOURTIN Anthracite  
38



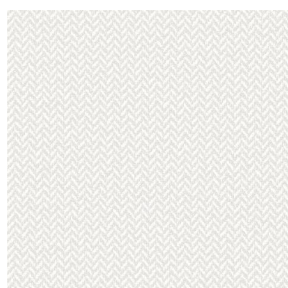
SCOURTIN Violine 105



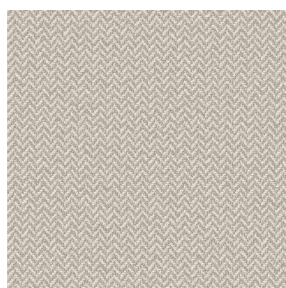
SCOURTIN Pacifique 54



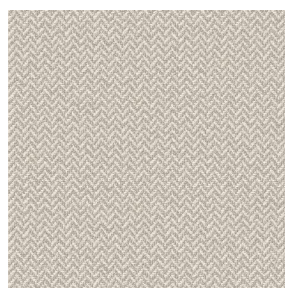
SCOURTIN Rose 129



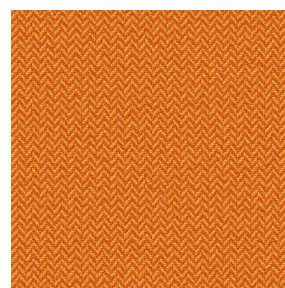
SCOURTIN Blanc 01



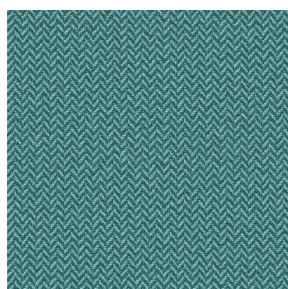
SCOURTIN Lin 11



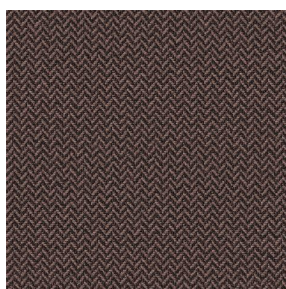
SCOURTIN Naturel 26



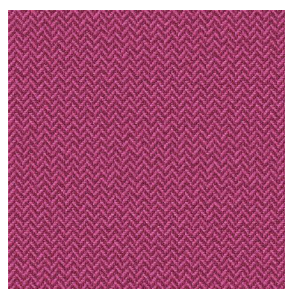
SCOURTIN Citrouille  
136



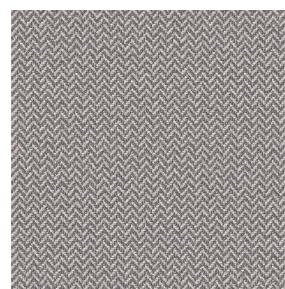
SCOURTIN Turquoise 53



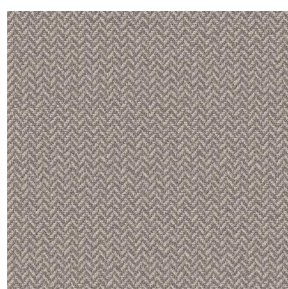
SCOURTIN Brun 23



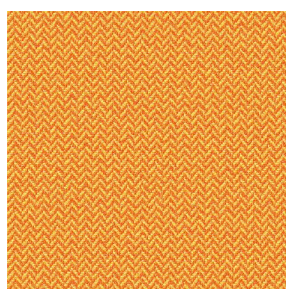
SCOURTIN Hortensia  
134



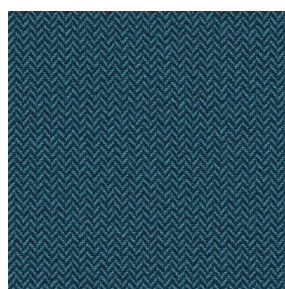
SCOURTIN Orage 123



SCOURTIN Ficelle 09



SCOURTIN Maïs 37



SCOURTIN Céladon 135



SCOURTIN Ebene 113



(Headquarters) SOTEXPRO - 510 route de Montchal - 42360 PANISSIÈRES - FRANCE - +33 4 77 27 60 60  
(Showroom) Le LAB' SOTEXPRO - 4 rue du Mail - 75002 PARIS - FRANCE

Non-contractual photos and colors - Indicative fitting - Fitting may vary depending on support selected



## Motif d'impression SCOURTIN



SCOURTIN Tourterelle  
138



SCOURTIN Titanium 98



SCOURTIN Lagon 110



SCOURTIN Gris 97



(Headquarters) SOTEXPRO - 510 route de Montchal - 42360 PANISSIÈRES - FRANCE - +33 4 77 27 60 60  
(Showroom) Le LAB' SOTEXPRO - 4 rue du Mail - 75002 PARIS - FRANCE

Non-contractual photos and colors - Indicative fitting - Fitting may vary depending on support selected