



**NOCTEA BPI 00**  
Support d'impression



**CHARLOTTE Bouteille 101**  
Motif d'impression



Visuel ne prenant pas en compte le support d'impression, le rendu final pouvant varier en fonction du support choisi.

# Support d'impression **NOCTEA BPI 00** Motif d'impression **CHARLOTTE** **Bouteille 101**

Ce tissu est utilisé comme support d'impression.

## Propriétés techniques



Non feu

**Applications** Store bateau - Store enrouleur - Parois japonaises - Doublure - Rideaux

**Composition** 100% polyester avec envers acrylique floqué blanc

**Poids** 310 g/m<sup>2</sup>

**Laize** 280 cm

**Sens** Contre sens

**Raccord** ↔ 0.0 cm ↓ 0.0 cm

**Conseils d'entretien**

**Label**

**Minimum commande** 25 mètre(s) linéaire(s)

## Caractéristiques techniques

Non feu

M1 / BS 5867 TYPE C / B1 / IMO PASS

Indices optiques

Réflexion lumière : **71 %**  
Absorption lumière : **29 %**  
Transmission lumière : **0 %**

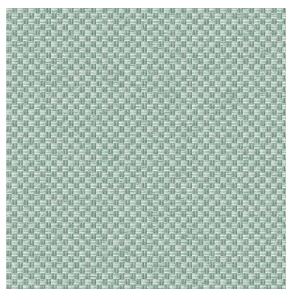
Indices thermiques

réflexion solaire : **66 %**  
absorption solaire : **34 %**  
Transmission solaire : **0 %**  
Transmission UV : **0 %**  
Gtot : **Gt 35 % Fc 60 %**

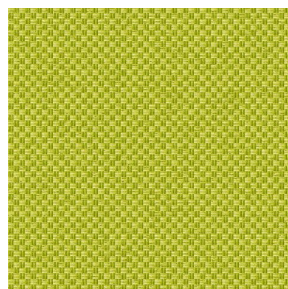
Résistance

Solidité lumière (unités Class/8) **4**  
Stabilité dimensionnelle (%)  
Chaîne **-0,5**  
Trame **0**  
Allongement rupture (mm)  
Chaîne **19**  
Trame **22**  
Résistance rupture (daN)  
Chaîne **37**  
Trame **57**

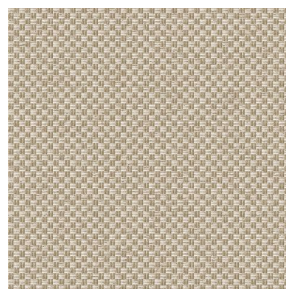
# Motif d'impression CHARLOTTE



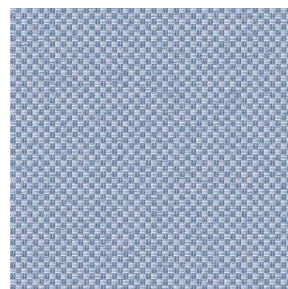
CHARLOTTE Absinthe  
132



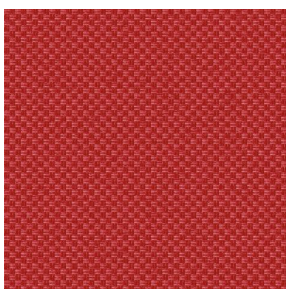
CHARLOTTE Anis 62



CHARLOTTE Beige 63



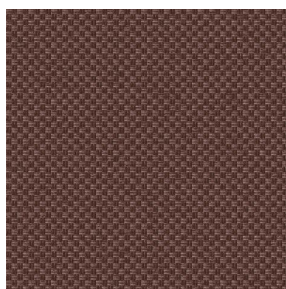
CHARLOTTE Brume 47



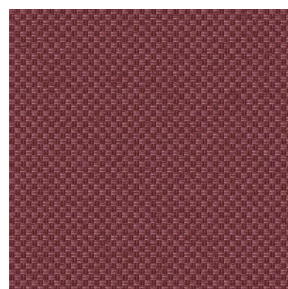
CHARLOTTE Cerise 66



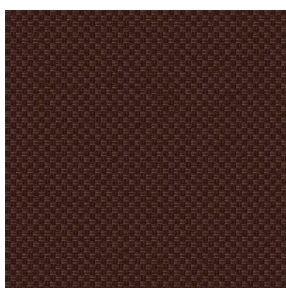
CHARLOTTE Chamois  
111



CHARLOTTE Chataigne  
55



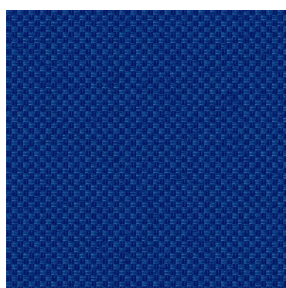
CHARLOTTE Chaudron  
118



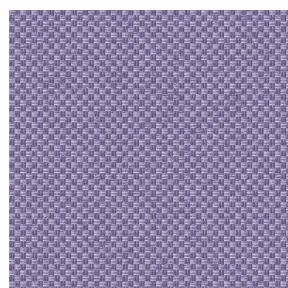
CHARLOTTE Chocolat  
70



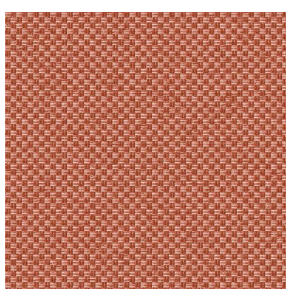
CHARLOTTE Citrouille  
136



CHARLOTTE Cobalt 114



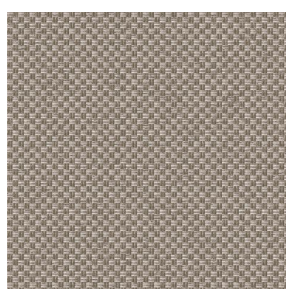
CHARLOTTE Crepuscule  
45



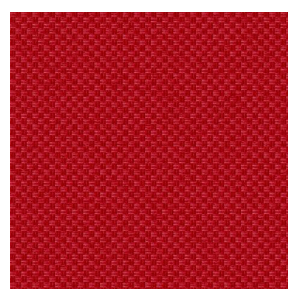
CHARLOTTE Cuivre 50



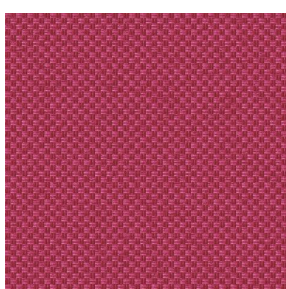
CHARLOTTE Ebene 124



CHARLOTTE Ficelle 09



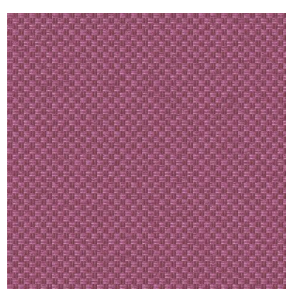
CHARLOTTE Fiesta 131



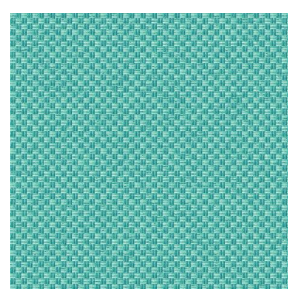
CHARLOTTE Grenat 56



CHARLOTTE Gris 97



CHARLOTTE Hortensia  
134



CHARLOTTE Lagon 110



(Headquarters) SOTEXPRO - 510 route de Montchal - 42360 PANISSIÈRES - FRANCE - +33 4 77 27 60 60  
(Showroom) Le LAB' SOTEXPRO - 4 rue du Mail - 75002 PARIS - FRANCE

Non-contractual photos and colors - Indicative fitting - Fitting may vary depending on support selected



# Motif d'impression CHARLOTTE



CHARLOTTE Lilas 19



CHARLOTTE Lin 11



CHARLOTTE Maïs 37



CHARLOTTE Melon 22



CHARLOTTE Menthe  
122



CHARLOTTE Mordore  
133



CHARLOTTE Mousse 92



CHARLOTTE Noir 10



CHARLOTTE Océan 91



CHARLOTTE Opéra 104



CHARLOTTE Orange 15



CHARLOTTE Pacifique  
54



CHARLOTTE Prairie 125



CHARLOTTE Printemps  
130



CHARLOTTE Sienne 29



CHARLOTTE Souris 31



CHARLOTTE Terre 107



CHARLOTTE Tilleul 103



CHARLOTTE Vieux rose  
64



CHARLOTTE Violine 105



(Headquarters) SOTEXPRO - 510 route de Montchal - 42360 PANISSIÈRES - FRANCE - +33 4 77 27 60 60  
(Showroom) Le LAB' SOTEXPRO - 4 rue du Mail - 75002 PARIS - FRANCE

Non-contractual photos and colors - Indicative fitting - Fitting may vary depending on support selected