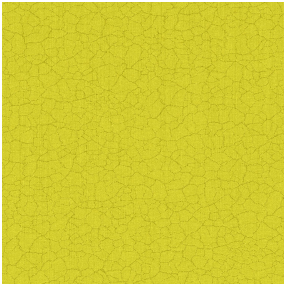


NOCTEA BPI 00
Support d'impression



TERRA Anis 62
Motif d'impression



Visuel ne prenant pas en compte le support d'impression, le rendu final pouvant varier en fonction du support choisi.

Support d'impression **NOCTEA BPI 00** Motif d'impression **TERRA Anis 62**

Ce tissu est utilisé comme support d'impression.

Propriétés techniques



Non feu

Applications Store bateau - Store enrouleur - Parois japonaises - Doublure - Rideaux

Composition 100% polyester avec envers acrylique floqué blanc

Poids 310 g/m²

Laize 280 cm

Sens Contre sens

Raccord ↔ 0.0 cm ↓ 0.0 cm

Conseils d'entretien     

Label

Minimum commande 25 mètre(s) linéaire(s)

Caractéristiques techniques

Non feu

M1 / BS 5867 TYPE C / B1 / IMO PASS

Indices optiques

Réflexion lumière : **71 %**
Absorption lumière : **29 %**
Transmission lumière : **0 %**

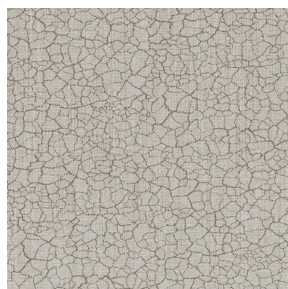
Indices thermiques

réflexion solaire : **66 %**
absorption solaire : **34 %**
Transmission solaire : **0 %**
Transmission UV : **0 %**
Gtot : **Gt 35 % Fc 60 %**

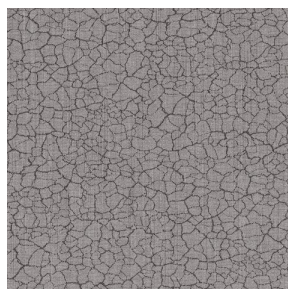
Résistance

Solidité lumière (unités Class/8) **4**
Stabilité dimensionnelle (%)
 Chaîne **-0,5**
 Trame **0**
Allongement rupture (mm)
 Chaîne **19**
 Trame **22**
Résistance rupture (daN)
 Chaîne **37**
 Trame **57**

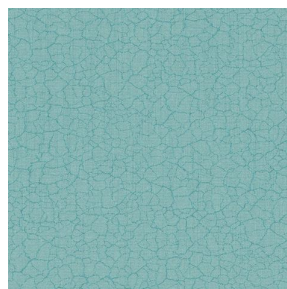
Motif d'impression TERRA



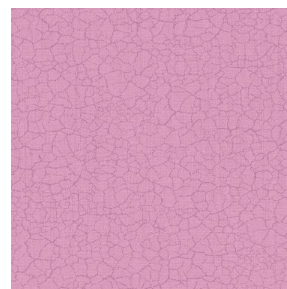
TERRA Ficelle 09



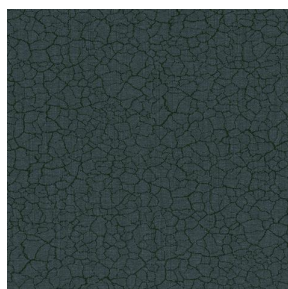
TERRA Taupe 95



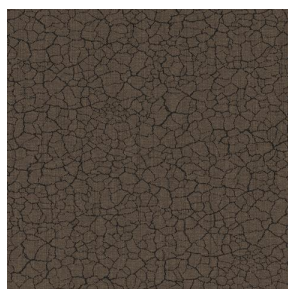
TERRA Ecume 82



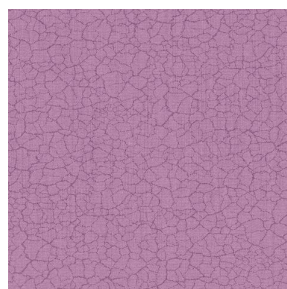
TERRA Rose 129



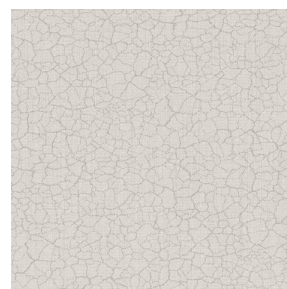
TERRA Fusain 71



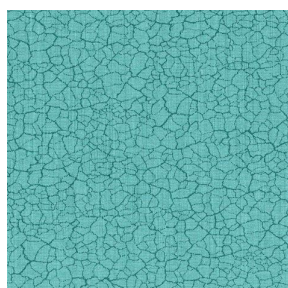
TERRA Brun 23



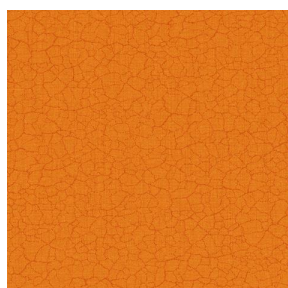
TERRA Hortensia 134



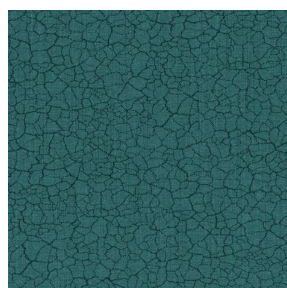
TERRA Naturel 26



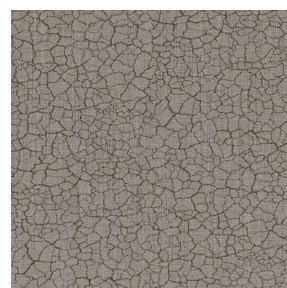
TERRA Lagon 110



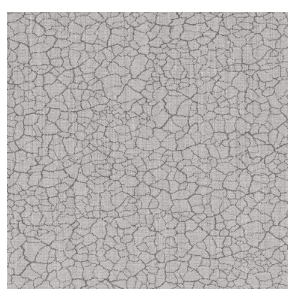
TERRA Citrouille 136



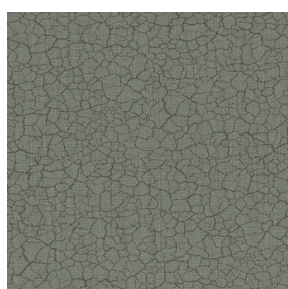
TERRA Pacifique 54



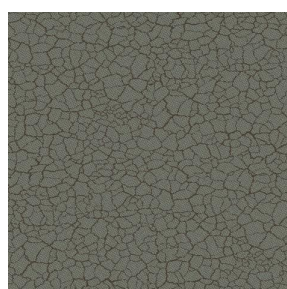
TERRA Chamois 111



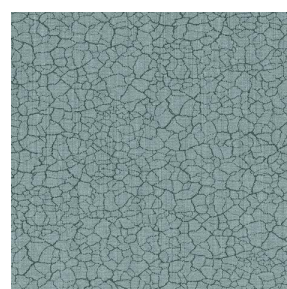
TERRA Titanium 98



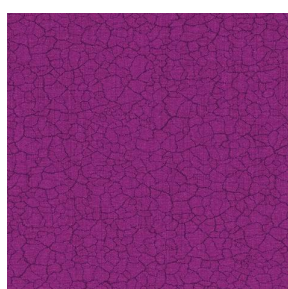
TERRA Graphite 77



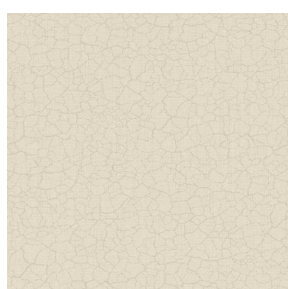
TERRA Gris 97



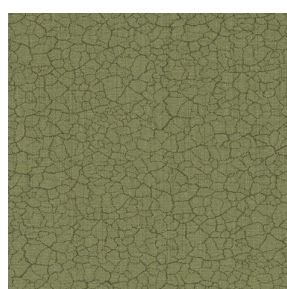
TERRA Ardoise 87



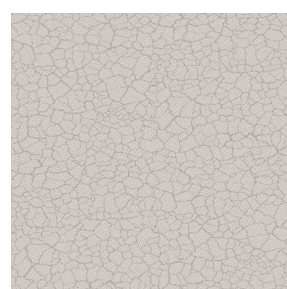
TERRA Violine 105



TERRA Chanvre 72



TERRA Argile 85



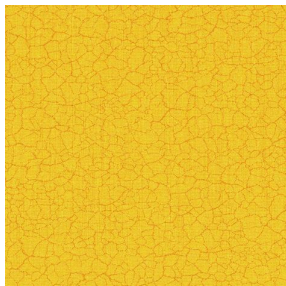
TERRA Lin 11



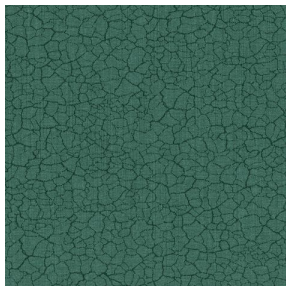
(Headquarters) SOTEXPRO - 510 route de Montchal - 42360 PANISSIÈRES - FRANCE - +33 4 77 27 60 60
(Showroom) Le LAB' SOTEXPRO - 4 rue du Mail - 75002 PARIS - FRANCE

Non-contractual photos and colors - Indicative fitting - Fitting may vary depending on support selected

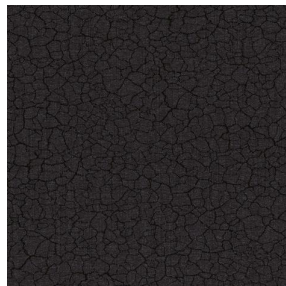
Motif d'impression TERRA



TERRA Genêt 06



TERRA Céladon 135



TERRA Ebene 113



TERRA Ocre 03



(Headquarters) SOTEXPRO - 510 route de Montchal - 42360 PANISSIÈRES - FRANCE - +33 4 77 27 60 60
(Showroom) Le LAB' SOTEXPRO - 4 rue du Mail - 75002 PARIS - FRANCE

Non-contractual photos and colors - Indicative fitting - Fitting may vary depending on support selected