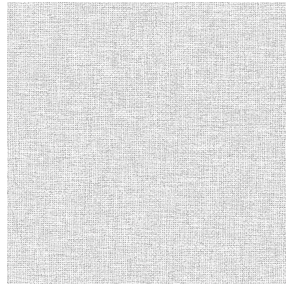




NOCTWIN BPI 00
Support d'impression



MUNA gris 97
Motif d'impression

Support d'impression **NOCTWIN BPI 00**

Motif d'impression **MUNA gris 97**

Support occultant pour impression, imprimable des 2 côtés.

Propriétés techniques



Non feu

Applications Rideaux - Store bateau - Parois japonaises

Composition Polyester/acrylique envers floqué

Poids 300 g/m²

Laize 280 cm

Sens Contre sens

Raccord → cm ↓ cm

Conseils d'entretien

Label

Minimum commande 25 mètre(s) linéaire(s)



Visuel ne prenant pas en compte le support d'impression, le rendu final pouvant varier en fonction du support choisi.

Caractéristiques techniques

Non feu

B1 / IMO PASS

Résistance

Solidité lumière (unités Class/8)	6
Stabilité dimensionnelle (%)	
Chaîne	-1
Trame	0
Allongement rupture (mm)	
Chaîne	31
Trame	8
Résistance rupture (daN)	
Chaîne	120
Trame	43

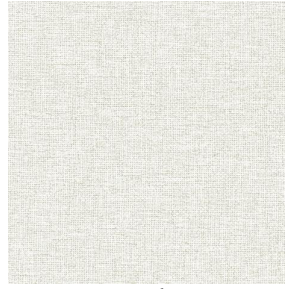
Motif d'impression MUNA



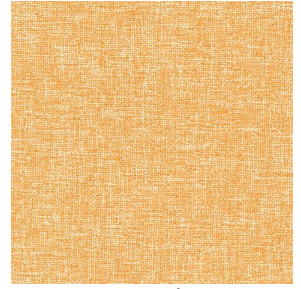
MUNA Cactus 36



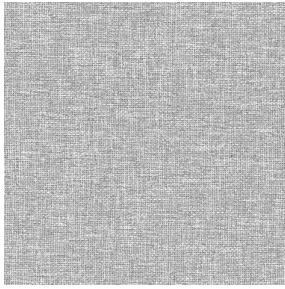
MUNA soleil 90



MUNA lin 11



MUNA Melon 22



MUNA souris 31



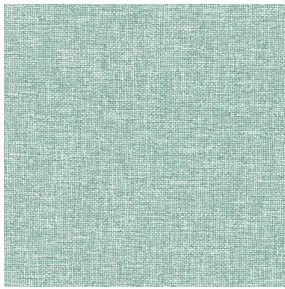
MUNA lagon 110



MUNA jade 116



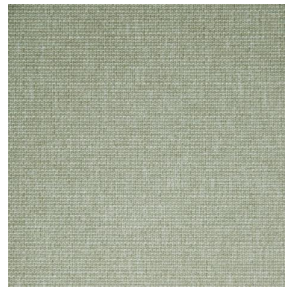
MUNA terre 107



MUNA céladon 135



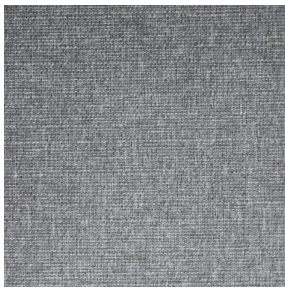
MUNA Coco 142



MUNA Sable 67



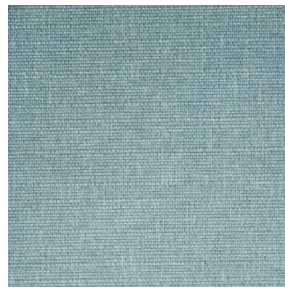
MUNA Saumon 143



MUNA Sisal 140



MUNA Tourterelle 138



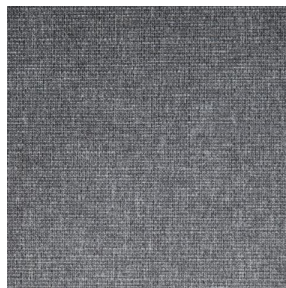
MUNA Ardoise 87



MUNA Tilleul 103



MUNA Chanvre 72



MUNA Graphite 77



MUNA Olive 61



MUNA Lierre 124



(Headquarters) SOTEXPRO - 510 route de Montchal - 42360 PANISSIÈRES - FRANCE - +33 4 77 27 60 60
(Showroom) Le LAB' SOTEXPRO - 4 rue du Mail - 75002 PARIS - FRANCE

Non-contractual photos and colors - Indicative fitting - Fitting may vary depending on support selected

Motif d'impression MUNA



MUNA Indigo 144



MUNA Sienne 29



MUNA Rouge 21



MUNA Saphir 106



MUNA Violine 105



MUNA Titanium 98



MUNA Acier 18



(Headquarters) SOTEXPRO - 510 route de Montchal - 42360 PANISSIÈRES - FRANCE - +33 4 77 27 60 60
(Showroom) Le LAB' SOTEXPRO - 4 rue du Mail - 75002 PARIS - FRANCE

Non-contractual photos and colors - Indicative fitting - Fitting may vary depending on support selected