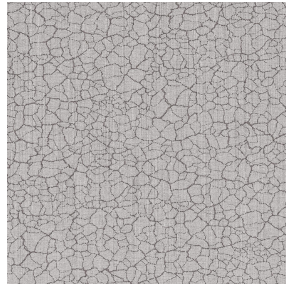




NOCTWIN BPI 00
Support d'impression



TERRA Titanium 98
Motif d'impression



Visuel ne prenant pas en compte le support d'impression, le rendu final pouvant varier en fonction du support choisi.

Support d'impression **NOCTWIN BPI 00** Motif d'impression **TERRA Titanium 98**

Support occultant pour impression, imprimable des 2 côtés.

Propriétés techniques



Non feu

Applications Store bateau - Parois japonaises - Rideaux


Composition Polyester/acrylique envers floqué

Poids 300 g/m²

Laize 280 cm

Sens Contre sens

Raccord ↔ 0.0 cm ↓ 0.0 cm

Conseils d'entretien     

Label

Minimum commande 25 mètre(s) linéaire(s)

Caractéristiques techniques

Non feu

B1 / IMO PASS

Résistance

Solidité lumière (unités Class/8)	6
Stabilité dimensionnelle (%)	
Chaîne	-1
Trame	0
Allongement rupture (mm)	
Chaîne	31
Trame	8
Résistance rupture (daN)	
Chaîne	120
Trame	43

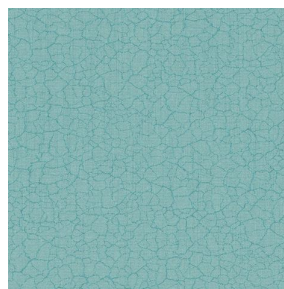
Motif d'impression TERRA



TERRA Ficelle 09



TERRA Taupe 95



TERRA Ecume 82



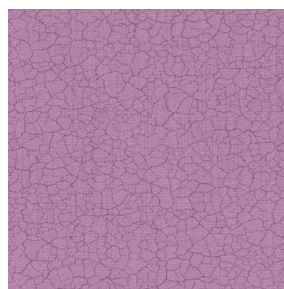
TERRA Rose 129



TERRA Fusain 71



TERRA Brun 23



TERRA Hortensia 134



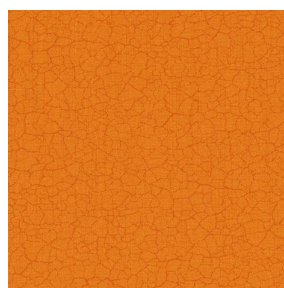
TERRA Naturel 26



TERRA Anis 62



TERRA Lagon 110



TERRA Citrouille 136



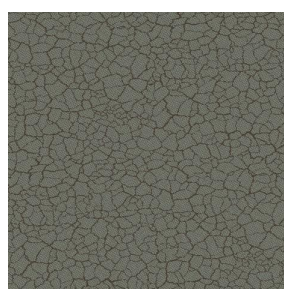
TERRA Pacifique 54



TERRA Chamois 111



TERRA Graphite 77



TERRA Gris 97



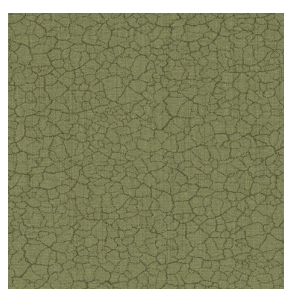
TERRA Ardoise 87



TERRA Violine 105



TERRA Chanvre 72



TERRA Argile 85



TERRA Lin 11



(Headquarters) SOTEXPRO - 510 route de Montchal - 42360 PANISSIÈRES - FRANCE - +33 4 77 27 60 60
(Showroom) Le LAB' SOTEXPRO - 4 rue du Mail - 75002 PARIS - FRANCE

Non-contractual photos and colors - Indicative fitting - Fitting may vary depending on support selected

Motif d'impression TERRA



TERRA Genêt 06



TERRA Céladon 135



TERRA Ebène 113



TERRA Ocre 03



(Headquarters) SOTEXPRO - 510 route de Montchal - 42360 PANISSIÈRES - FRANCE - +33 4 77 27 60 60
(Showroom) Le LAB' SOTEXPRO - 4 rue du Mail - 75002 PARIS - FRANCE

Non-contractual photos and colors - Indicative fitting - Fitting may vary depending on support selected