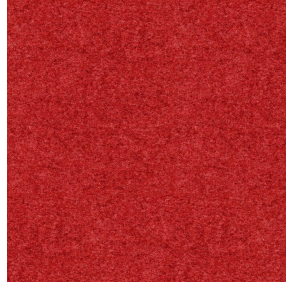




NOCTWIN BPI 00
Support d'impression



ELAINA Rouge 21
Motif d'impression



Visuel ne prenant pas en compte le support d'impression, le rendu final pouvant varier en fonction du support choisi.

Support d'impression **NOCTWIN BPI 00**

Motif d'impression **ELAINA Rouge 21**

Support occultant pour impression, imprimable des 2 côtés.

Propriétés techniques



Non feu

Applications Store bateau - Parois japonaises - Rideaux

Composition Polyester/acrylique envers floqué

Poids 300 g/m²

Laize 280 cm

Sens Contre sens

Raccord ↔ 0.0 cm ↓ 0.0 cm

Conseils d'entretien

Label

Minimum commande 25 mètre(s) linéaire(s)

Caractéristiques techniques

Non feu

B1 / IMO PASS

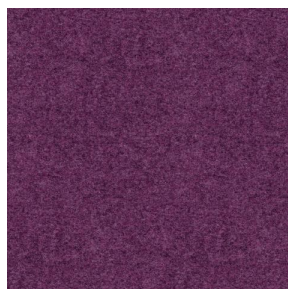
Résistance

Solidité lumière (unités Class/8)	6
Stabilité dimensionnelle (%)	
Chaîne	-1
Trame	0
Allongement rupture (mm)	
Chaîne	31
Trame	8
Résistance rupture (daN)	
Chaîne	120
Trame	43

Motif d'impression ELAINA



ELAINA Gris 91



ELAINA Violine 105



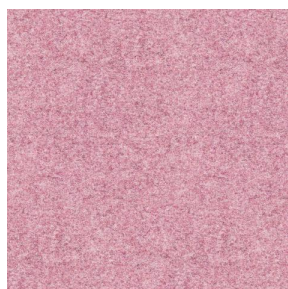
ELAINA Ocre 03



ELAINA Lin 11



ELAINA Bergamote 121



ELAINA Rose 129



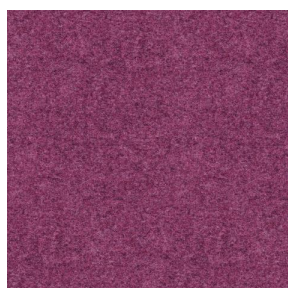
ELAINA Pacifique 54



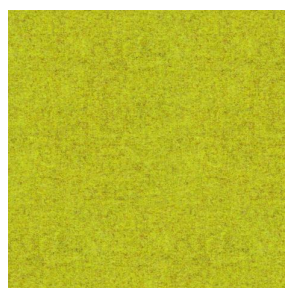
ELAINA Beige 63



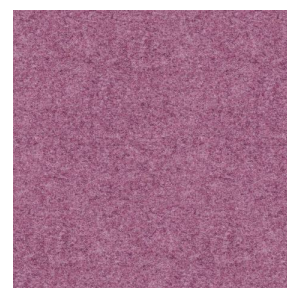
ELAINA Céladon 135



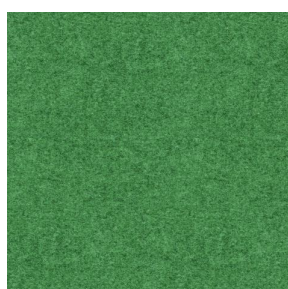
ELAINA Saphir 106



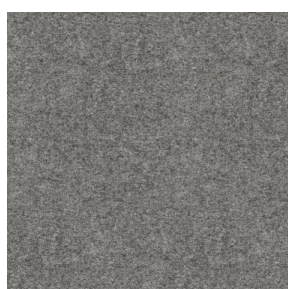
ELAINA Anis 62



ELAINA Hortensia 134



ELAINA Prairie 125



ELAINA Graphite 77



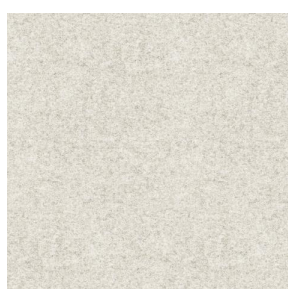
ELAINA Lierre 124



ELAINA Naturel 26



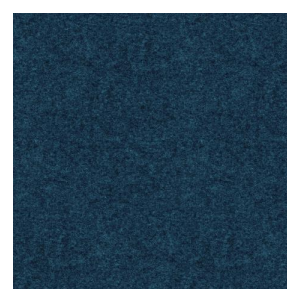
ELAINA Genêt 06



ELAINA Ivoire 115



ELAINA Gentiane 16



ELAINA Navy 120



(Headquarters) SOTEXPRO - 510 route de Montchal - 42360 PANISSIÈRES - FRANCE - +33 4 77 27 60 60
(Showroom) Le LAB' SOTEXPRO - 4 rue du Mail - 75002 PARIS - FRANCE

Non-contractual photos and colors - Indicative fitting - Fitting may vary depending on support selected

Motif d'impression ELAINA



ELAINA Chamois 111



ELAINA Turquoise 53



ELAINA Anthracite 38



ELAINA Fiesta 131



(Headquarters) SOTEXPRO - 510 route de Montchal - 42360 PANISSIÈRES - FRANCE - +33 4 77 27 60 60
(Showroom) Le LAB' SOTEXPRO - 4 rue du Mail - 75002 PARIS - FRANCE

Non-contractual photos and colors - Indicative fitting - Fitting may vary depending on support selected